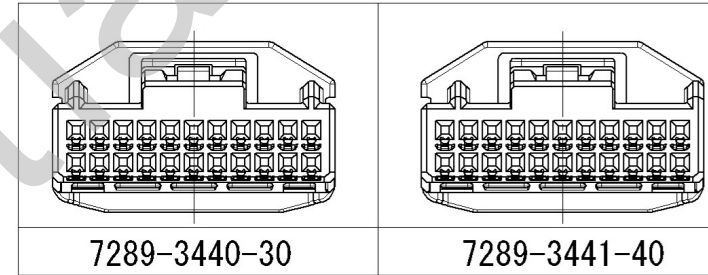
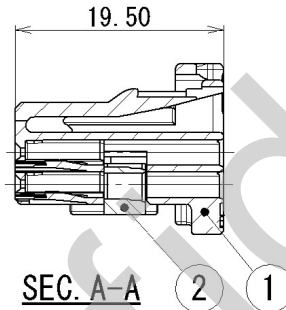
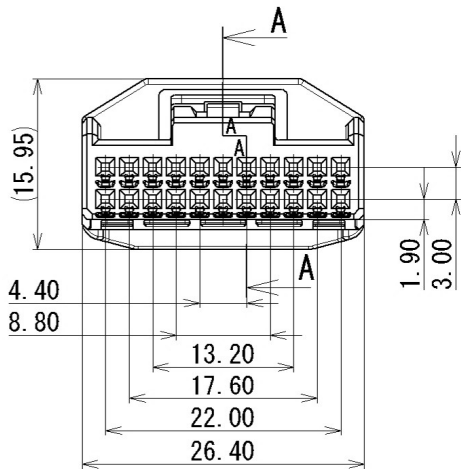
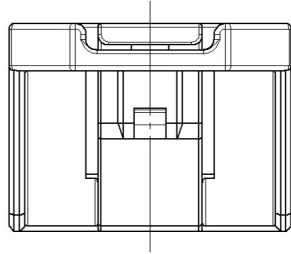


GENERAL TOLERANCE											
	10 MAX	50 MAX	100 MAX	250 MAX	250 OVR	R5 MAX	R10 MAX	R20 MAX	R20 OVR	ANGLE	ECCENT
A	±0.15	±0.2	±0.3	±0.5	±0.75					±3°	0.1
B	±0.2	±0.3	±0.55	±0.95	±1.4	±0.2	±0.3	±0.5	±2.5	±3°	0.1
C	±0.3	±0.5	±0.8	±1.4	±2					±3°	0.15

SUB ASSEMBLY PART NO. AND CH. CODE		NO.	YAZAKI PART NO. AND CH. CODE	PART NAME	MATERIAL	COLOR	QTY.
7289-3439		①	7189-3439	0.64 22P HOUSING FEMALE	PBT	NATURAL	1
		②	7172-0978	0.64 22P SPACER FEMALE	PBT	NATURAL	1
7289-3440-30		①	7189-3440-30	0.64 22P HOUSING FEMALE	PBT	BLACK	1
		②	7172-0978	0.64 22P SPACER FEMALE	PBT	NATURAL	1
7289-3441-40		①	7189-3441-40	0.64 22P HOUSING FEMALE	PBT	LIGHT GRAY	1
		②	7172-0978	0.64 22P SPACER FEMALE	PBT	NATURAL	1



注記

- 1. かん合相手品番 : 7288-3436、7288-3437-30、7288-3438-40
- 2. 適用端子品番 : 7196-0158-02

NOTES

- 1. MATING PART NO. : 7288-3436, 7288-3437-30, 7288-3438-40
- 2. APPLICABLE TERMINAL NO. : 7196-0158-02

					CUSTOMER					MATL. SPEC. SEE TABLE				TREAT. & FIN.					
					CUSTOMER PART NO.					CUSTOMER DWG NO.									
2014/07/15					NEW					C14-Z416				J. L					
LET	DATE	REVISION RECORD			NO.	CHKD	OFFICE					TRIAL PART NO.				NAME			
												X41387-PR72, X41387-PR78,				0.64 22P HOUSING FEMALE			
										VENDOR				X41387-PR84				SUB ASSEMBLY	
										VENDOR NO.									
GENERAL TOLERANCE												DWG TYPE	DWG SOURCE	DWG DATE	UNIT	SCL	ANGLE	PART NO.	
A	±0.15	±0.2	±0.3	±0.5	±0.75	±30'	0.1	R	NEW	2014/07/15	mm	2:1	3	7289-3439 ETC.					
B	±0.2	±0.3	±0.55	±0.95	±1.4	±30'	0.1	APPROVED	CHECKED	CHECKED	DESIGN	DRAWN	DWG NO. 7289-3439:R						
C	±0.3	±0.5	±0.8	±1.4	±2	±30'	0.15	S. CHIBA	Y. WADA	K. MATSUSHITA	K. MATSUSHITA	J. LEGASPI	SET DWG NO.						
SPECIFIED							MASS					2014/07/15				YAZAKI CORPORATION			