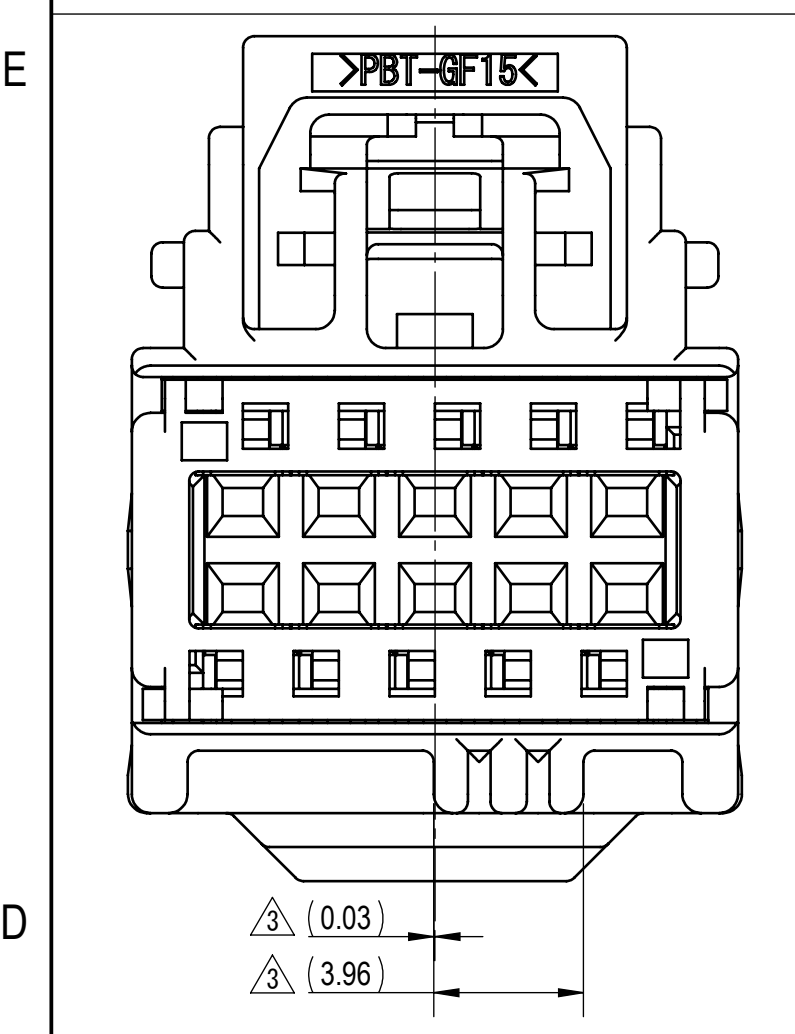


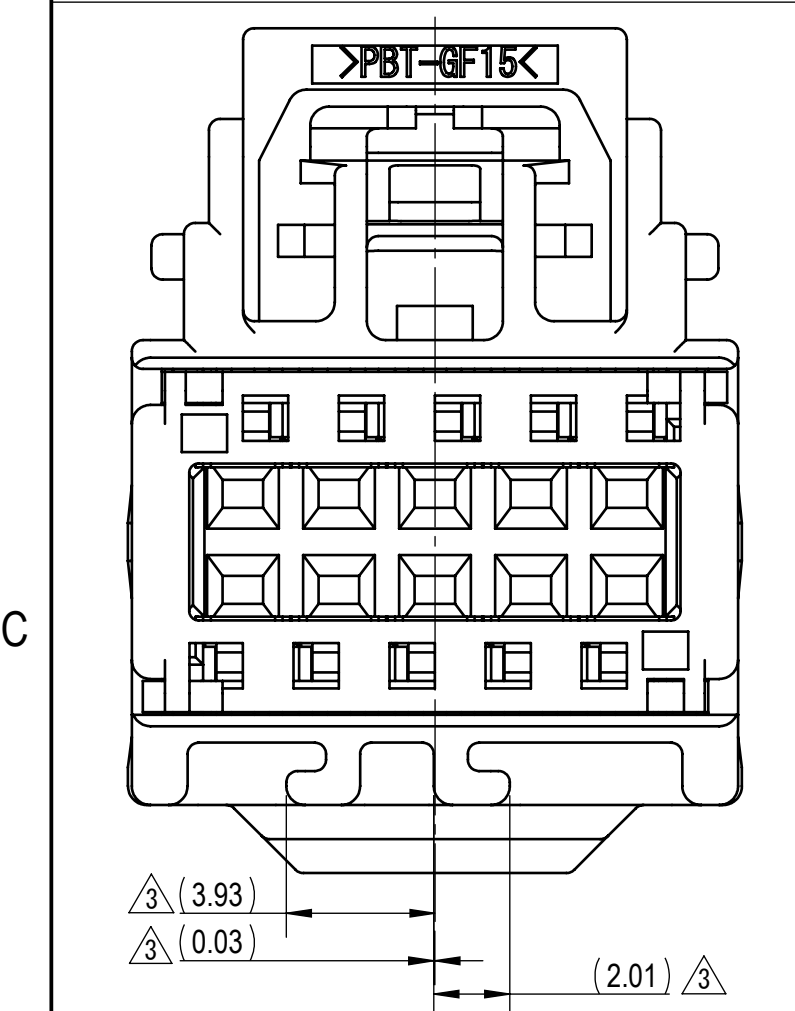
GENERAL TOLERANCE											
	10MAX	50MAX	100MAX	250MAX	250OVR	RS MAX	R10 MAX	R20 MAX	R20 OVR	ANGLE	ECCENT
A	±0.15	±0.2	±0.3	±0.5	±0.75					±3°	0.1
B	±0.2	±0.3	±0.55	±0.95	±1.4	±0.2	±0.3	±0.5	±2.5	±3°	0.1
(C)	±0.3	±0.5	±0.8	±1.4	±2					±3°	0.15
SPECIFIED											MASS
SEE TABLE 2											

SUB ASSEMBLY PART NUMBER		NO.	PART NUMBER	PART NAME	MATERIAL	COLOR	QUANTITY
SEE TABLE 2		①	SEE TABLE 2	10P YESC KAIZEN 0.64 UNSEALED FEMALE HOUSING	PBT-GF15	SEE TABLE 2	1
SEE TABLE 2		②	7158-6582	10P YESC KAIZEN 0.64 UNSEALED FEMALE TPA	PBT-GF15	NATURAL	1
SEE TABLE 2		③	7172-1081-50	YESC KAIZEN 0.64 UNSEALED CPA	NYLON	RED	1

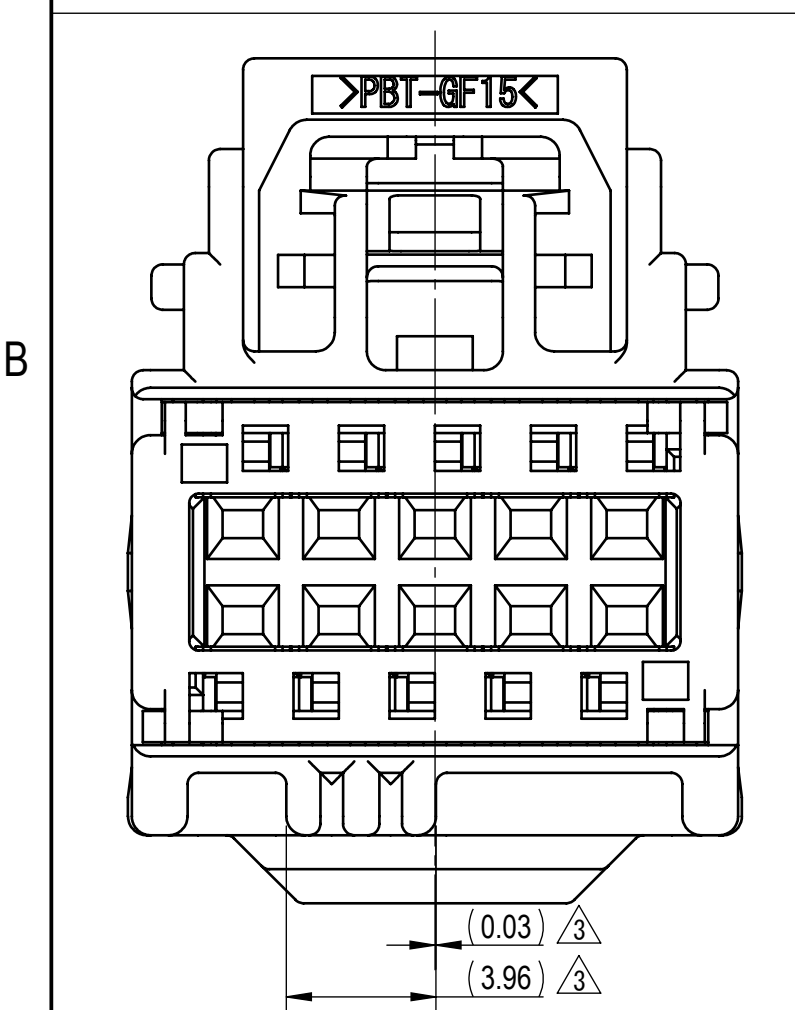
SUB ASSEMBLY PART NUMBER	HOUSING PART NUMBER	KEYWAY	CPA	COLOR	WEIGHT (g)	YAZAKI INLINE MATING PART NUMBER
7283-9040-30	7183-9034-30	A	NO	BLACK	(4.05)	7282-9040-30
7283-9043-60	7183-9037-60	D	NO	GREEN	(4.05)	N/A
7283-9045	7183-9039	F	NO	NATURAL	(4.05)	N/A
7289-4886-30	7183-9034-30	A	YES	BLACK	(4.37)	7282-9040-30
7289-5068-60	7183-9037-60	D	YES	GREEN	(4.37)	N/A
7289-4885	7183-9039	F	YES	NATURAL	(4.37)	N/A



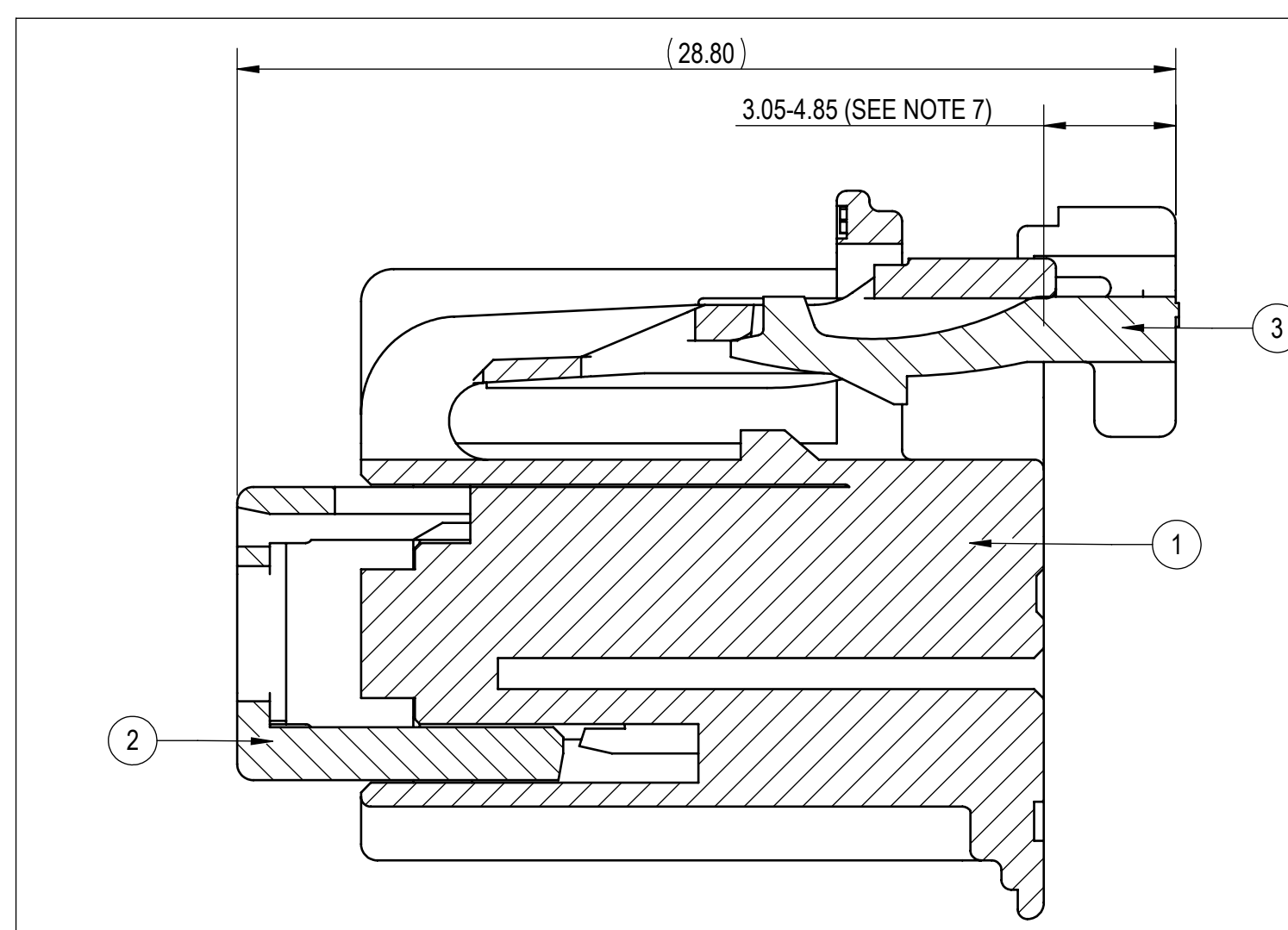
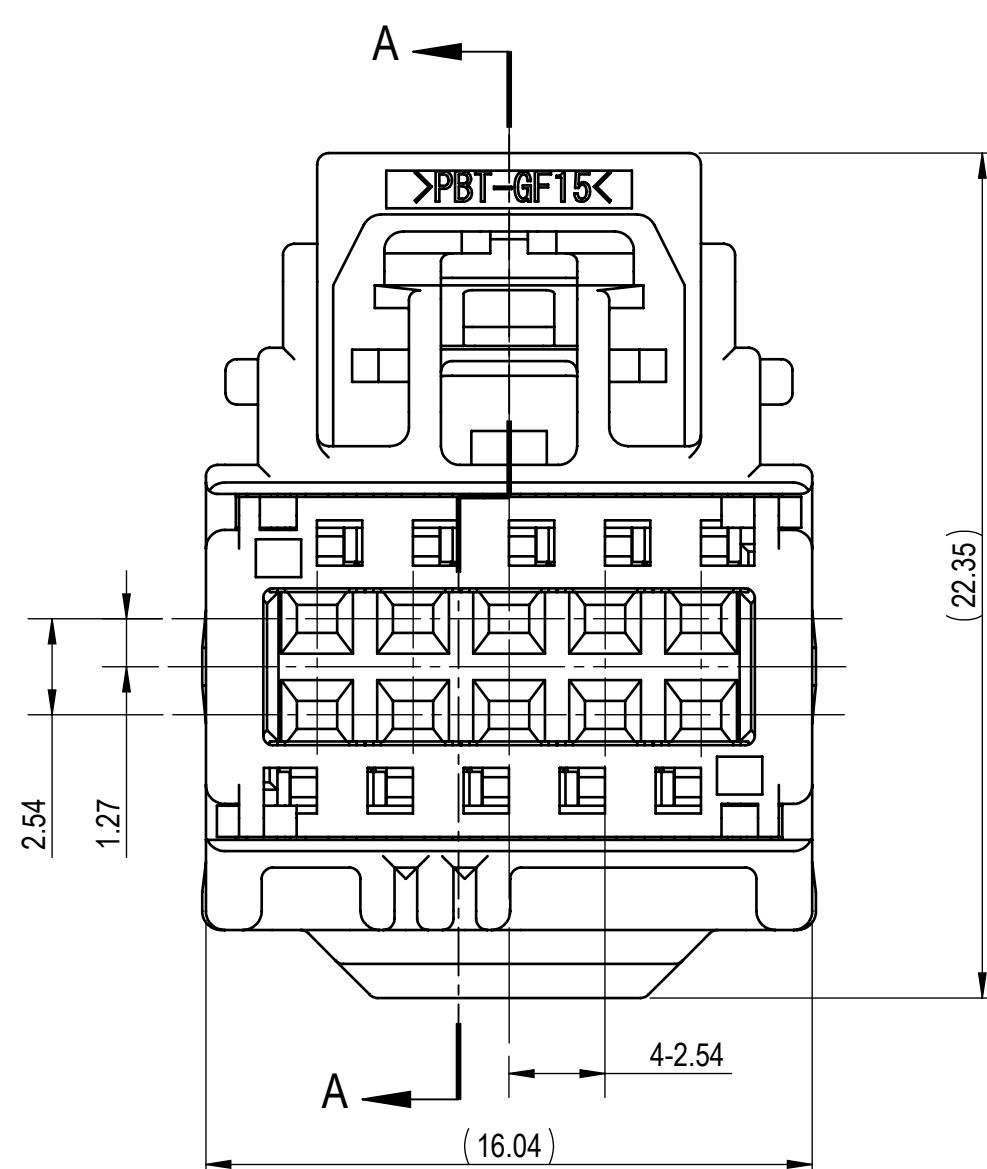
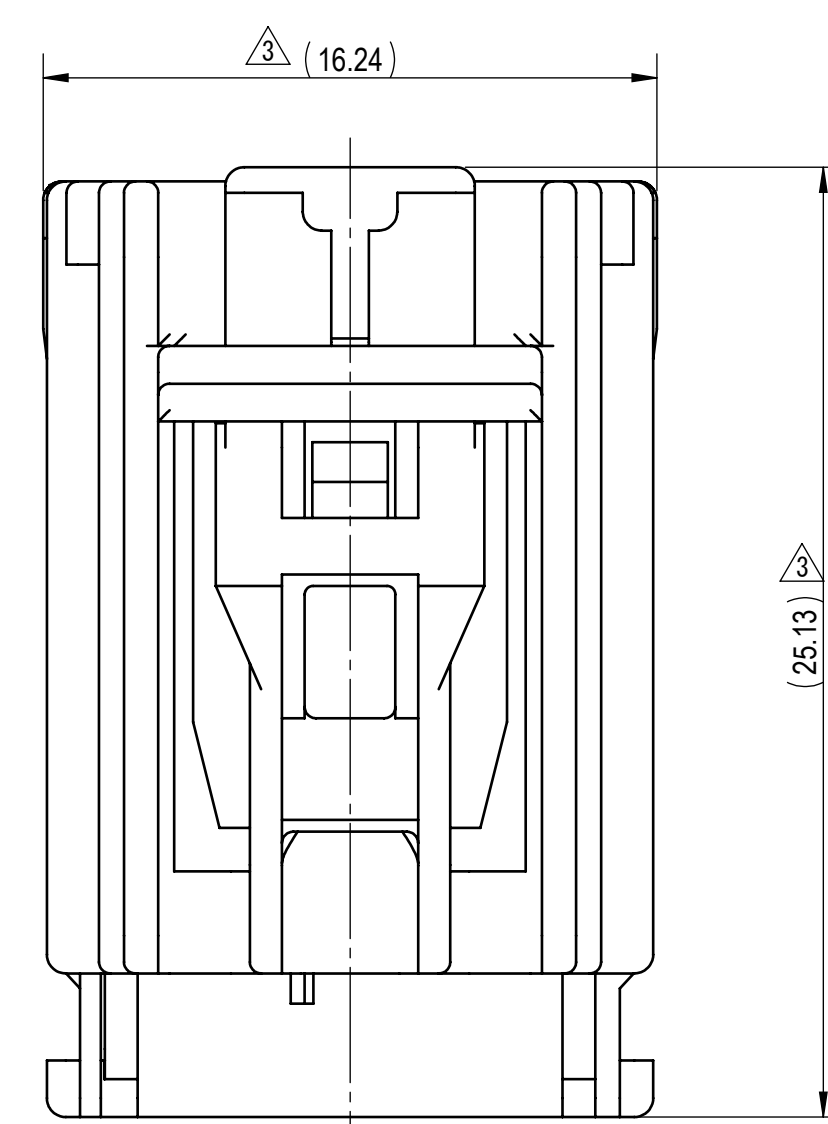
7283-9040-30, 7289-4886-30 (OPTION A) LIGHT GRAY



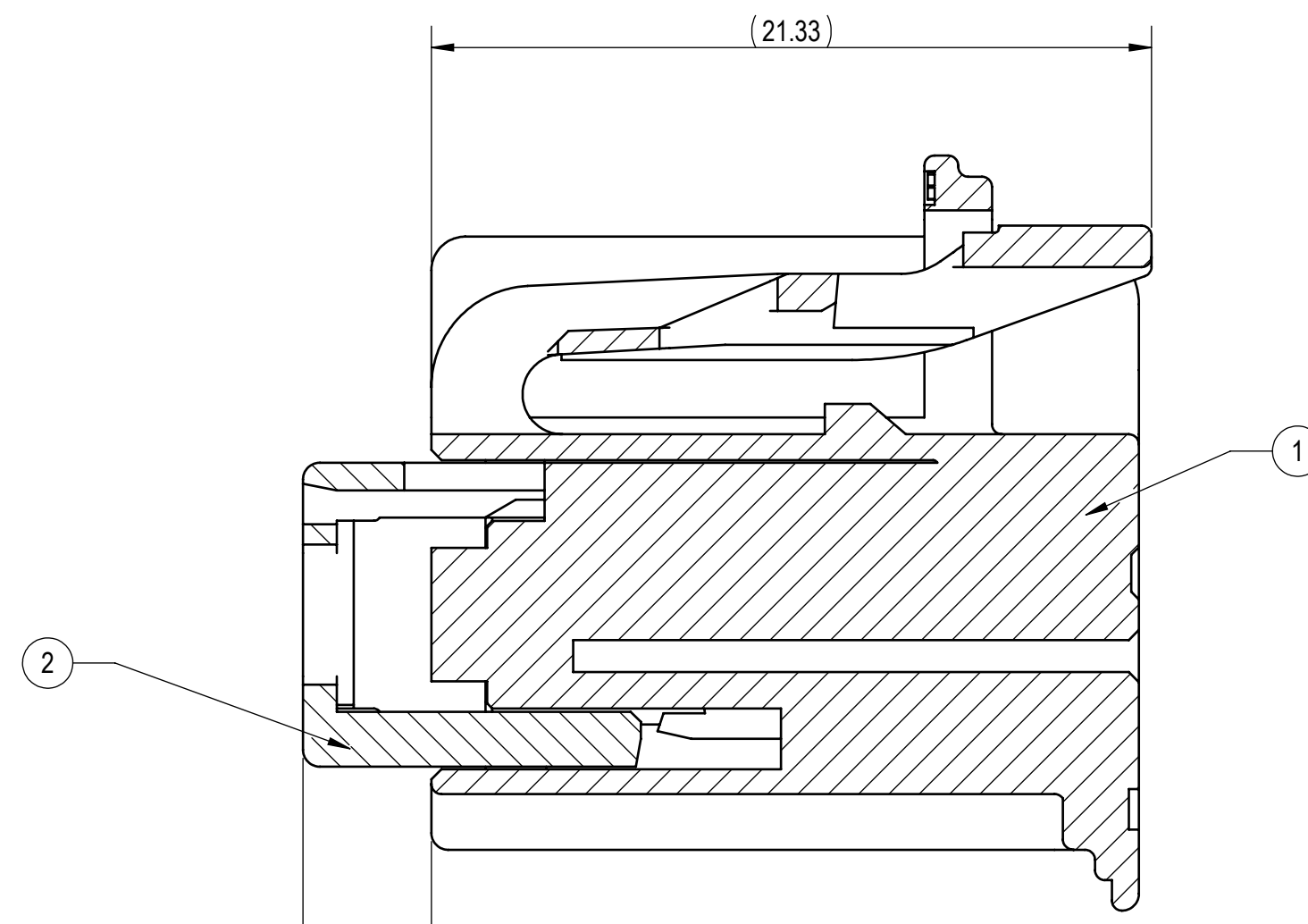
7283-9043-60, 7289-5068-60 (OPTION D) GREEN



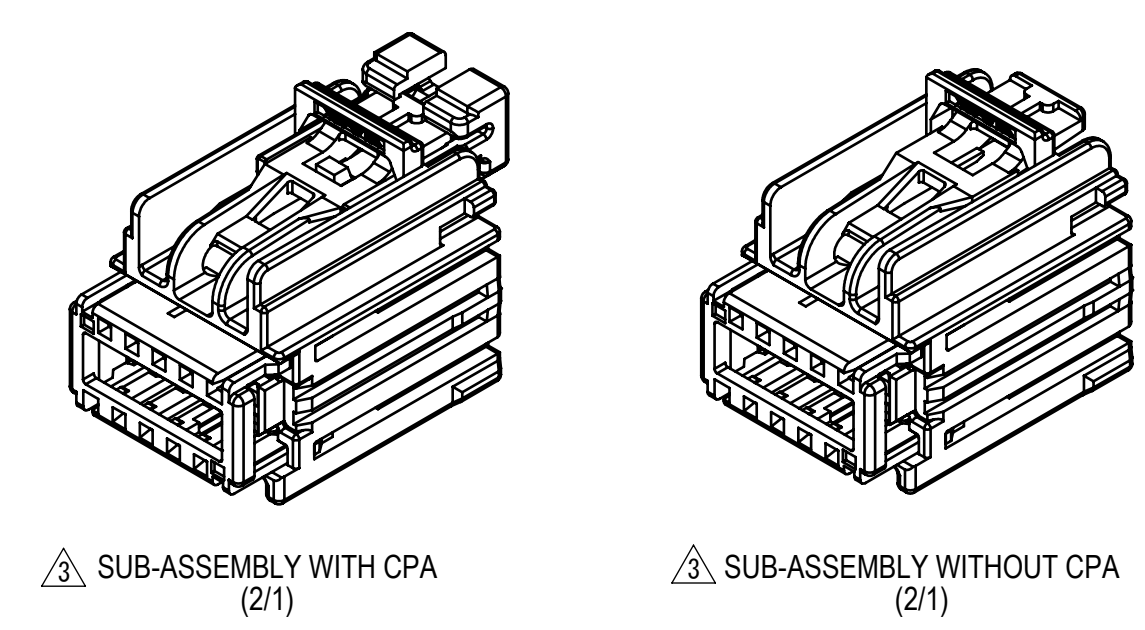
7283-9045, 7289-4885 (OPTION F) NATURAL



SECTION A-A SUB-ASSEMBLY WITH CPA

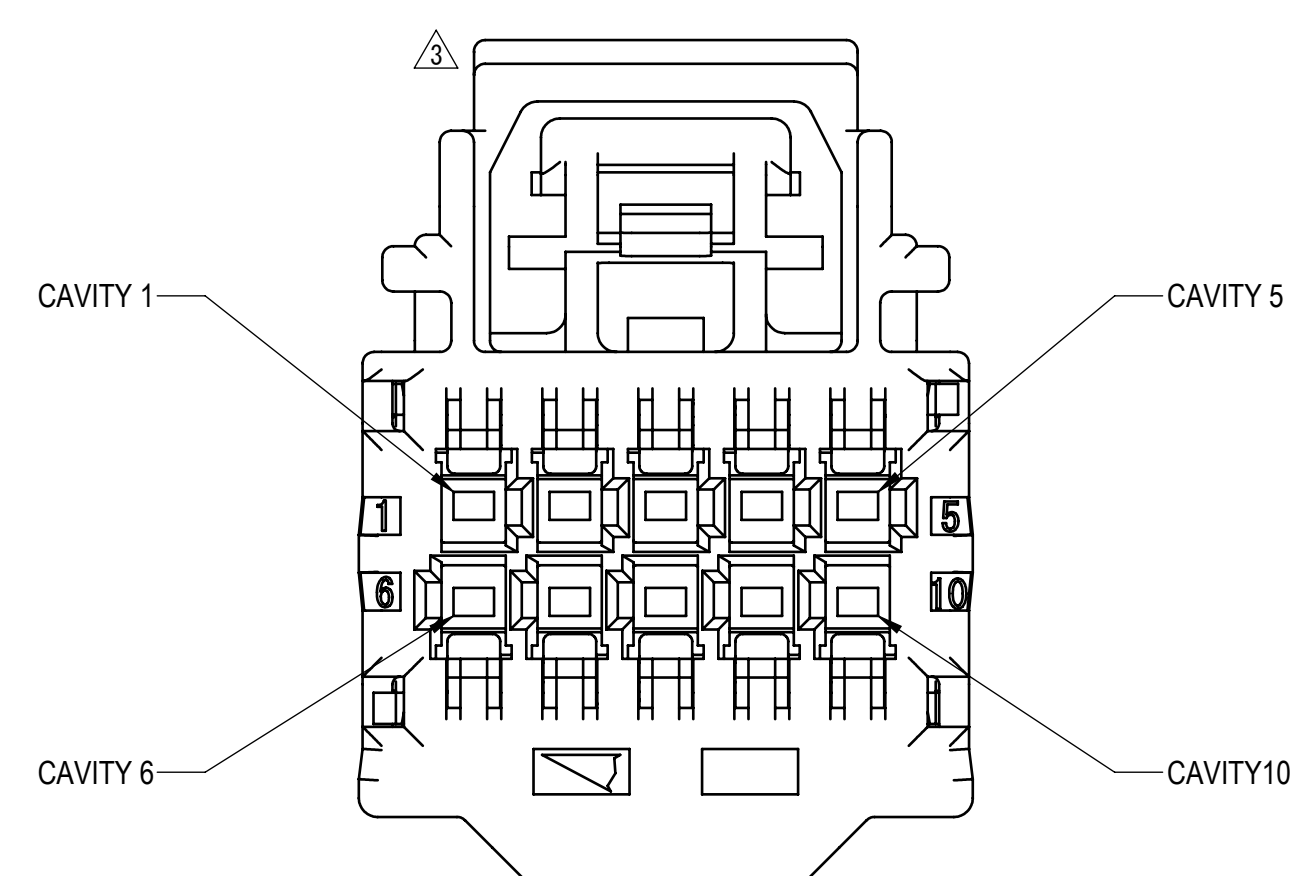


SECTION A-A SUB-ASSEMBLY WITHOUT CPA



1 SUB-ASSEMBLY WITH CPA (2/1)

2 SUB-ASSEMBLY WITHOUT CPA (2/1)



- NOTES:
- PARTS MUST BE PURCHASED FROM YAZAKI.
 - PARTS MUST BE FREE OF FLASH AND IMPERFECTIONS THAT AFFECT FUNCTION.
 - APPLICABLE TERMINAL NUMBER: SEE 7116-4618-02:R
 - PART DESIGNED TO SATISFY USCAR-2 REV. 3. DATED APRIL 2001. TEMPERATURE CLASS 2 WITH THE FOLLOWING EXCEPTIONS:
A. 5.4.2 LOCK DEFLECTION FORCE
 - PART DESIGNED TO MEET USCAR INTERFACE: 064-U-010-2-Z02
 - THIS DIMENSION SHOWS THE PRE-SET POSITION OF THE TPA.
 - THIS DIMENSION SHOWS THE PRE-SET POSITION OF THE CPA.
 - PART TO COMPLY WITH YPES-31-038 REQUIREMENTS.
 - THIS DRAWING IS TO BE USED FOR INTERNAL YAZAKI PSW SUBMISSION.

LET	DATE	REVISION RECORD	NO.	CHKD
△	11/03/15	CHANGED FORM, TABLE, ADDED DIMENSIONS & CPA	C15-A867	K.S.
△	10/15/10	CHANGED PART NAME	C10-ZA71	R.E.
△	06/22/06	CHANGED FORM & ETC. [A]	C06-A671	T.Y.
△	12/22/03	NEW	C03-R529	T.M.

CUSTOMER		CUSTOMER DWG NO.		MTRL SPEC.		TREAT. & FIN.	
YNA		TRIAL PART NO.		SEE TABLE		SEE TABLE	
OFFICE				NAME			
VENDOR				10P KAIZEN 0.64 UNSEALED FEMALE			
VENDOR NO.				SUB-ASSEMBLY			
DWG TYPE	DWG SOURCE	DWG DATE	UNIT	SCL	ANGLE	PART NO.	CH. CODE
R	7283-9040-30.M/△	12/22/03	mm	5:1	3	7283-9040-30 ETC.	
APPROVED	CHECKED	CHECKED	DESIGN	DRAWN		DWG NO.	SET DWG NO.
			T. MIYAKAWA	KIRK STAMBAUGH		7283-9040-30:R	
YAZAKI CORPORATION							