

SEC. A-A

TABLE 1

SUB ASSEMBLY PART NO. AND CH. CODE	NO.	PART NO. AND CH. CODE	MATERIAL	COLOR	QTY.
7283-8228 ETC.	①	SEE TABLE 2	PBT	SEE TABLE 2	1
	②	7157-4430	PBT	NATURAL	1
	③	SEE TABLE 2	PBT	SEE TABLE 2	1
	④	7137-2620-40	NBR	LIGHT GRAY	1

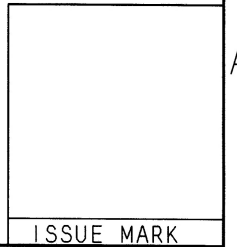
TABLE 2

SUB ASSEMBLY PART NO. AND CH. CODE	HOUSING PART NO. AND CH. CODE	HOLDER PART NO. AND CH. CODE	COLOR
7283-8228. □	7183-8228	7157-4236	NATURAL
7283-8228-30. □	7183-8228-30	7157-4236-30	BLACK
7283-8228-40. □	7183-8228-40	7157-4236-40	LIGHT GRAY

- 注記
1. 嵌合相手品番 : 7282-8228-10 ETC.
 2. 適用端子品番 : 7116-4025 ETC.

- NOTES
1. MATING PART NO. : 7282-8228-10 ETC.
 2. APPLICABLE TERMINAL NO. : 7116-4025 ETC.

DATE	REVISION RECORD	NO.	CHKD	CUSTOMER	CUSTOMER PART NO.	CUSTOMER DWG NO.	MATL. SPEC.	TREAT. & FIN.
01.02.15	CHANGED FORM. □	C01-X176	C. T				SEE TABLE 1	
00.01.06	ELIMINATED COLOR NO.	C00-L037	C. T					
99.06.04	CHANGED FORM. □	C99-L797	C. T					
98.02.17	CHANGED FORM & ADDED PART NO. □	C98-L310	M. Y					
96.12.02	NEW. □	C96-N179	H. K					
LET DATE REVISION RECORD NO. CHKD				OFFICE TRIAL_PART_NO.			NAME 090Ⅱ 2P SEALED CONNECTOR	
GENERAL TOLERANCE				VENDOR NO.			HOUSING FEMALE SUB ASSEMBLY	
A	±0.15	±0.2	±0.3	±0.5	±0.75	±30'	0.1	R
B	±0.2	±0.3	±0.55	±0.95	±1.4	±30'	0.1	APPROVED
C	±0.3	±0.5	±0.8	±1.4	±2	±30'	0.15	CHECKED
SPECIFIED				S. KODAMA			DRAWN	
MASS				加藤 山梨 鳥居			ISHIJIMA	
g				01.02.22			01.02.15	
				90.03.29			YAZAKI CORPORATION	



ISSUE MARK

PART NO. AND CH. CODE: 7283-8228 ETC.
 DWG NO.: 7283-8228:R
 SET DWG NO.: