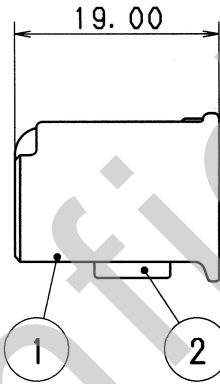
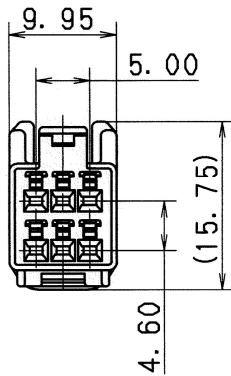
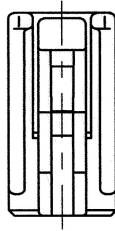


TABLE 1

SUB ASSEMBLY PART NO. AND CH. CODE	NO.	PART NO. AND CH. CODE	MATERIAL	COLOR	QTY.
△7283-5862 ETC.	①	△SEE TABLE 2	PBT	△SEE TABLE 2	1
	②	7158-4731	PBT	NATURAL	1

TABLE 2

SUB ASSEMBLY PART NO. AND CH. CODE	PART NO. AND CH. CODE	COLOR
7283-5862.□	7183-5862	NATURAL
△7283-5862-51.□	7183-5862-51	SAE ORANGE
△7283-5862-90.□	7183-5862-90	BLUE



注記

1. 嵌合相手品番 : 7382-5862 ETC.

△ 2. 適用端子品番 : 7116-4231-08 (金)
7116-4231-02 (錫)

NOTES

1. MATING PART NO. : 7382-5862 ETC.

△ 2. APPLICABLE TERMINAL NO. : 7116-4231-08 (GOLD)
7116-4231-02 (TIN)

△	06/01/09	ADDED COLOR PART NO. ETC. □	C06-Z044	N. T
△	02/09/16	CHANGED NOTES, PART NAME & ADDED COLOR NO. □	C02-Y020	Y. I
△	00/06/30	CHANGED FORM. □	C00-L884	S. S
△	98/06/02	NEW	C98-L668	T. M
LET	DATE	REVISION RECORD	NO.	CHKD

CUSTOMER		MATERIAL SPEC.		TREAT. & FIN.	
CUSTOMER PART NO.		SEE TABLE 1			
OFFICE		NAME		△ 1. 0Ⅲ (040Ⅲ) 6P CONNECTOR	
VENDOR		TRIAL PART NO.		HOUSING FEMALE SUB ASSEMBLY	
VENDOR NO.					

GENERAL TOLERANCE		VENDOR NO.		PART NO. AND CH. CODE	
10MAX	50MAX	100MAX	250MAX	2500VR	ANGLE
±0.15	±0.2	±0.3	±0.5	±0.75	±30'
A	±0.2	±0.3	±0.55	±0.95	±1.4
B	±0.2	±0.3	±0.55	±0.95	±1.4
③	±0.3	±0.5	±0.8	±1.4	±2
SPECIFIED		MASS		9	
				△ 7283-5862 ETC.	
				DWG NO. 7283-5862:R	
				SET DWG NO.	
				YAZAKI CORPORATION	