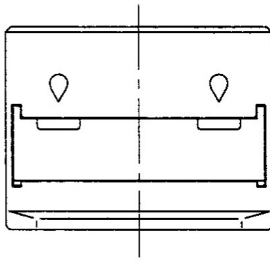
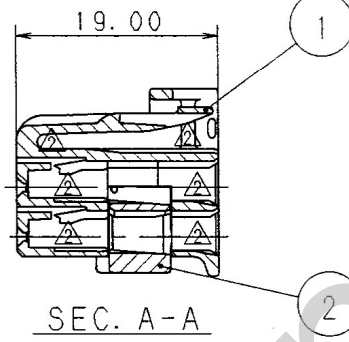
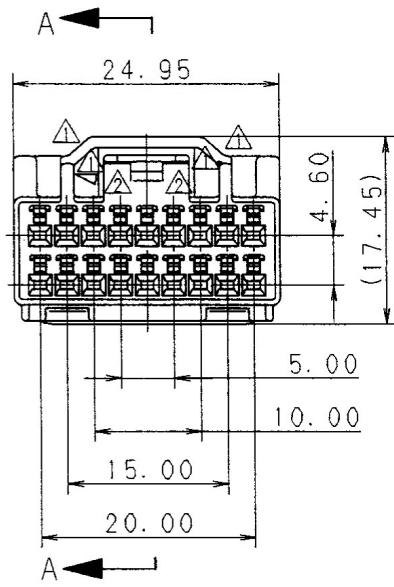


TABLE 1

SUB ASSEMBLY PART NO. AND CH. CODE	NO.	PART NO. AND CH. CODE	MATERIAL	COLOR	QTY.
7283-5833 ETC.	①	SEE TABLE 2	PBT	SEE TABLE 2	1
	②	7158-4727	PBT	NATURAL	1

△ TABLE 2

SUB ASSEMBLY PART NO. AND CH. CODE	PART NO. AND CH. CODE	COLOR
7283-5833 (7C83-5833)	7183-5833 (7B83-5833)	NATURAL
7283-5833-40	7183-5833-40	LIGHT GRAY
7283-5833-90	7183-5833-90	BLUE



注記

- 1. 嵌合相手品番：7282-5833 ETC.
- 2. 適用端子品番：7116-4233-02 ETC.
- △ 3. () 内品番はA/B回路及び特別管理回路に使用する時に適用すること。

NOTES

- 1. MATING PART NO. : 7282-5833 ETC.
- 2. APPLICABLE TERMINAL NO. : 7116-4233-02 ETC.
- △ 3. () PART NO. IS USED FOR PARTS ASSOCIATED WITH A/B CIRCUITS OR OTHER SPECIFIED CIRCUIT.

ISSUE MARK

△ 98.05.29	ADDED A/B PART NO., CHANGED FORM & ELIMINATED COLOR NO.	C98-L953	T. M	CUSTOMER	CUSTOMER PART NO.	CUSTOMER DWG NO.	MATL. SPEC.	SEE TABLE 1	TREAT. & FIN.
△ 97.05.06	CHANGED FORM	C97-L793	H. K	OFFICE	TRIAL PART NO.		NAME	040Ⅲ 18P CONNECTOR HOUSING	
△ 97.03.24	NEW	C97-L581	H. K	VENDOR			FEMALE SUB ASSEMBLY		
LET	DATE	REVISION RECORD NO.	CHKD	VENDOR NO.			PART NO. CH. CODE	△ 7283-5833 ETC. (7C83-5833)	
GENERAL TOLERANCE				DWG TYPE	DWG SOURCE	DWG DATE	UNIT	SCL	ANGLE
	10MAX	50MAX	100MAX	250MAX	2500VR	ANGLE	ECCENT		
A	±0.15	±0.2	±0.3	±0.5	±0.75	±30'	0.1	R	NEW
B	±0.2	±0.3	±0.55	±0.95	±1.4	±30'	0.1	APPROVED	CHECKED
③	±0.3	±0.5	±0.8	±1.4	±2	±30'	0.15	DESIGN	DRAWN
SPECIFIED				MASS	98.6.5	98.06.04	98.06.03	96.11.26	98.05.29
				加藤	山梨	美藤	T. MIWA	MIYAJIMA	遠藤
				98.6.5	98.06.04	98.06.03	96.11.26	98.05.29	
				YAZAKI CORPORATION					