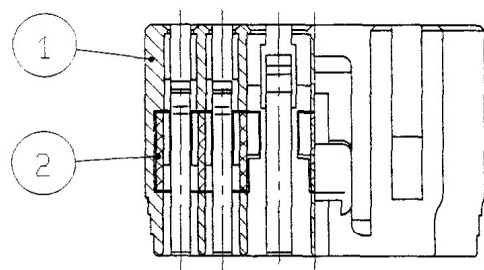
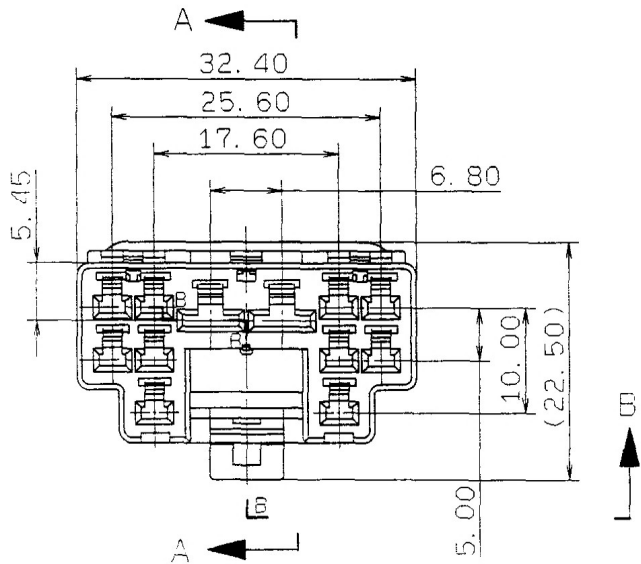


TABLE 1

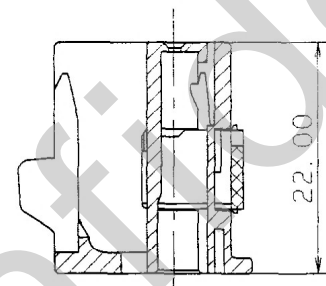
SUB ASSEMBLY PART NO. AND CH. CODE	NO.	PART NO. AND CH. CODE	MATERIAL	COLOR	QTY.
7283-1128 ETC.	①	SEE TABLE 2	△ PBT	SEE TABLE 2	1
	②	7157-4048 △(7B57-4048)	△ PBT	NATURAL	1

△ TABLE 2

SUB ASSEMBLY PART NO. AND CH. CODE	PART NO. AND CH. CODE	COLOR
7283-1128. □ △(7C83-1128)	7183-1128 △(7B83-1128)	NATURAL
7283-1128-30. □	7183-1128-30	BLACK
7283-1128-40. □	7183-1128-40	LIGHT GRAY
7283-1128-50. □	7183-1128-50	ORANGE
7283-1128-60. □	7183-1128-60	GREEN
7283-1128-90. □	7183-1128-90	BLUE



SEC. B-B



SEC. A-A

注記

- 嵌合相手品番: 7282-1128 ETC.
- 適用端子品番: 7116-4020 ETC. (090II)
7116-4030 ETC. (187)
- ()内品番は、A/B回路及び特別管理回路に使用する時に適用すること。

NOTES

- MATING PART NO. : 7282-1128 ETC.
- APPLICABLE TERMINAL NO. :
7116-4020 ETC. (090II)
7116-4030 ETC. (187)
- PART NUMBERS IN PARENTHESIS SHALL BE USED FOR A/B CIRCUITS AND OTHER CIRCUITS DESIGNATED FOR SPECIAL MONITORING.

ISSUE MARK

△ 99.03.05	ELIMINATED COLOR NO. & CHANGED MATERIAL. □	C99-L420	T. M	CUSTOMER		MATL. SPEC.	SEE TABLE 1	TREAT. & FIN.						
△ 96.07.18	CHANGED MATERIAL. △	C96-M142	H. K	CUSTOMER PART NO.	CUSTOMER DWG NO.	NAME	090II 10P+187 2P HYBRID							
90.11.10	NEW	C90-M212	M. H	OFFICE	TRIAL PART NO.	CONNECTOR SUB ASSEMBLY FEMALE								
LET DATE	REVISION RECORD	NO.	CHKD	VENDOR		PART NO. CH. CODE	7283-1128 ETC. (7C83-1128) △							
GENERAL TOLERANCE				VENDOR NO.		DWG NO.	7283-1128:R							
	10MAX	50MAX	100MAX	250MAX	250OVR	ANGLE	ECCENT	DWG TYPE	DWG SOURCE	DWG DATE	UNIT	SCL	ANGLE	PART NO. CH. CODE
A	±0.15	±0.2	±0.3	±0.5	±0.75	±30'	0.1	R	NEW	90.11.10	mm	2/1	3	7283-1128 ETC. (7C83-1128) △
B	±0.2	±0.3	±0.55	±0.95	±1.4	±30'	0.1	APPROVED	CHECKED	CHECKED	DESIGN	DRAWN	DWG NO.	SET DWG NO.
(C)	±0.3	±0.5	±0.8	±1.4	±2	±30'	0.15	加藤	山梨	藤	Y. OHTA	KANAZAWA	7283-1128:R	
SPECIFIED				MASS	9	加藤 山梨 藤			Y. OHTA KANAZAWA 杉山			YAZAKI CORPORATION		
						99.03.22	99.03.18	99.03.16	87.09.27	99.03.05				