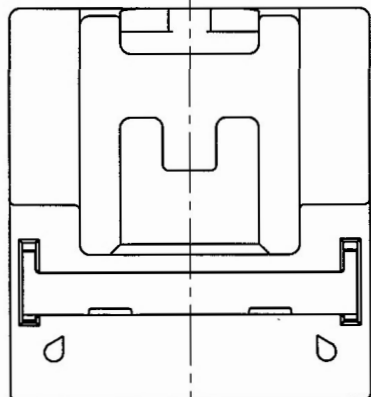
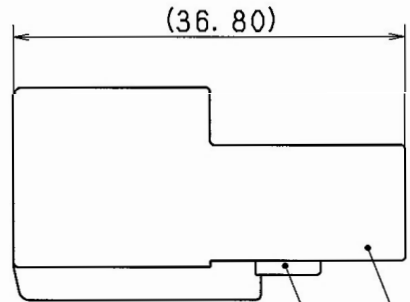


△ TABLE 1

SUB ASSEMBLY PART NO. AND CH. CODE	NO.	PART NO. AND CH. CODE	△ PART NAME	MATERIAL	COLOR	QTY.
7282-5834 ETC. △(7C82-5834 ETC.)	①	SEE TABLE 2	1. 0Ⅲ(040Ⅲ) 22P HOUSING MALE	PBT	SEE TABLE 2	1
	②	7158-4728 △(7B58-4728)	1. 0Ⅲ(040Ⅲ) 22P SPACER MALE	PBT	NATURAL	1

△ TABLE 2

SUB ASSEMBLY PART NO. AND CH. CODE	PART NO. AND CH. CODE	COLOR
△ 7282-5834 △(7C82-5834)	7182-5834 (7B82-5834)	NATURAL
△ 7282-5834-30	7182-5834-30	BLACK
△ 7282-5834-40 △(7C82-5834-40)	7182-5834-40 (7B82-5834-40)	LIGHT GRAY
△ 7282-5834-90	7182-5834-90	BLUE



注記

- △ 1. 納入相手品番 : 7283-5834 ETC. (7C83-5834)
- △ 2. 取扱説明書NO. : YPES-15-274
- △ 3. () 内品番は、エアバッグ (A/B) 回路及び特別管理回路に使用する時に適用すること。

NOTES

- △ 1. MATING PART NO. : 7283-5834 ETC. (7C83-5834)
- △ 2. HANDLING MANUAL NO. : YPES-15-274
- △ 3. PART NUMBERS IN PARENTHESIS SHALL BE USED FOR AIR BAG (A/R) CIRCUITS AND OTHER CIRCUITS DESIGNATED FOR SPECIAL MONITORING.

△	11. 07. 03	CHANGED PART NAME ETC.	C11-Z429	R. B			
△	02. 08. 26	CHANGED PART NAME, NOTES & ADDED COLOR	C02-X882	Y. S			
△	98. 12. 11	ADDED A/B PART NO. & NOTE	C98-N092	H. T			
△	98. 06. 19	ELIMINATED COLOR NO.	C98-M143	T. M			
△	97. 05. 22	NEW	C97-L882	H. K			
LET	DATE	REVISION RECORD	NO.	CHKD			
GENERAL TOLERANCE							
	10MAX	50MAX	100MAX	250MAX	2500VR	ANGLE	ECCENT
A	±0.15	±0.2	±0.3	±0.5	±0.75	±30'	0.1
B	±0.2	±0.3	±0.55	±0.95	±1.4	±30'	0.1
③	±0.3	±0.5	±0.8	±1.4	±2	±30'	0.15
SPECIFIED							MASS

CUSTOMER				MATL. SPEC.		TREAT. & FIN.	
CUSTOMER PART NO.		CUSTOMER DWG NO.		SEE TABLE 1			
OFFICE				NAME 1. 0Ⅲ(040Ⅲ) 22P HOUSING			
VENDOR				△ MALE SUB ASSEMBLY			
VENDOR NO.		DWG TYPE		DWG SOURCE		PART NO. CH. CODE	
		R		NEW		△ 7282-5834 ETC. (7C82-5834 ETC.)	
		APPROVED		CHECKED		DWG NO. 7282-5834:R	
		M. FUKUDA		T. MURO		SET DWG NO.	
		11. 07. 03		11. 07. 03		YAZAKI CORPORATION	