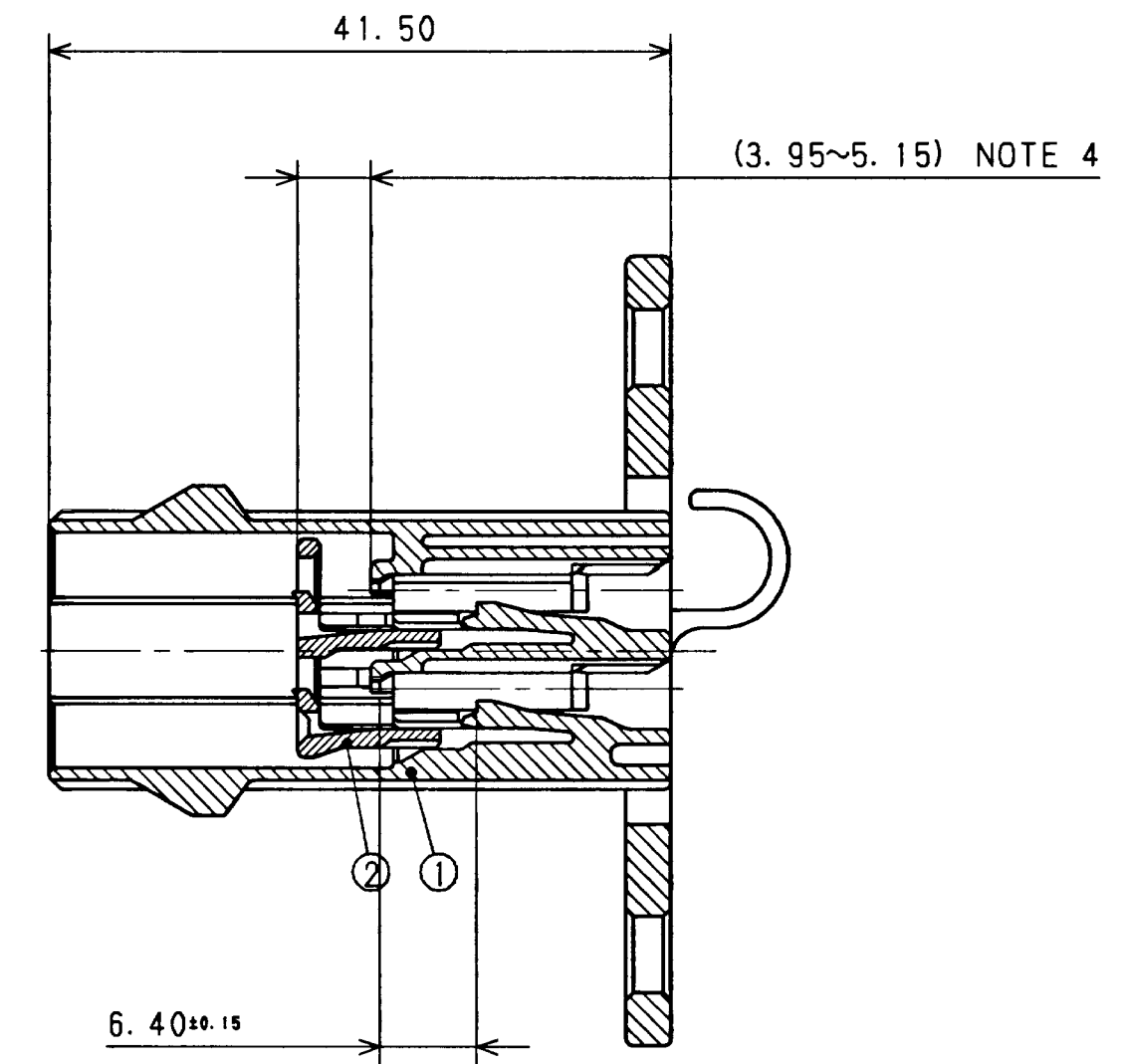
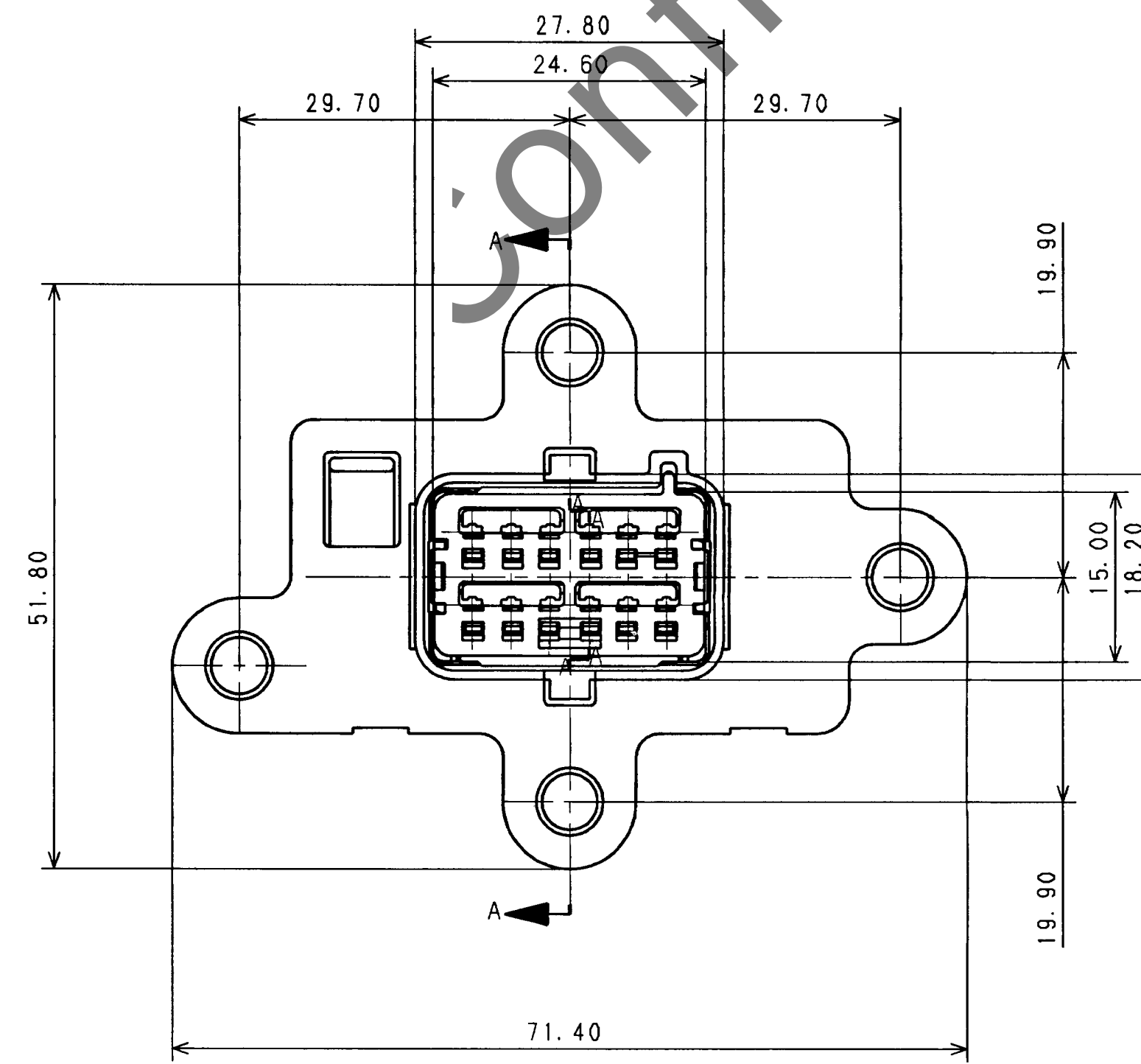
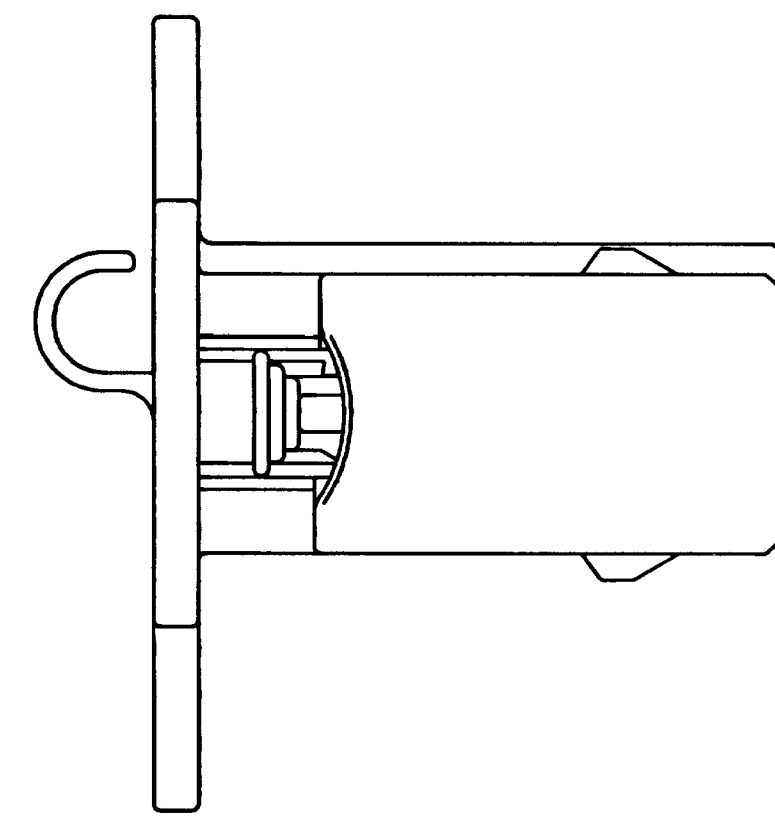
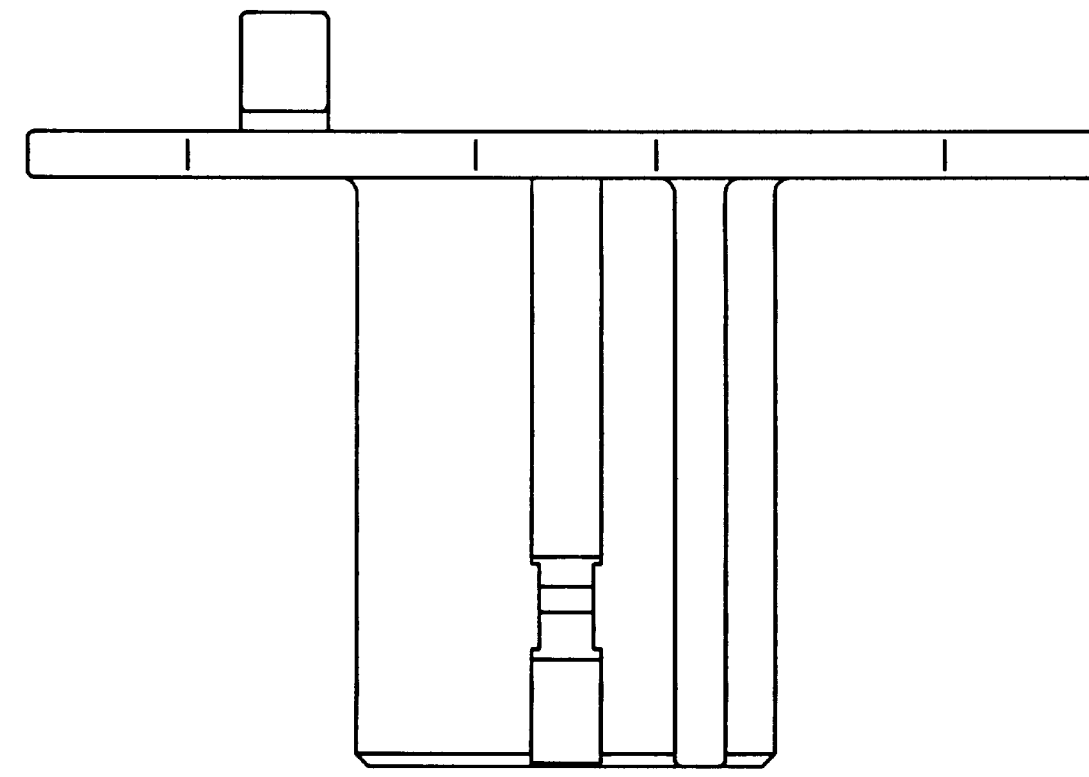


SUB ASS'Y PART NO.	NO.	PART NO.	PART NAME	MATERIAL	COLOR	QTY.
7282-4848-30	①	7182-4848-30	1.5 SYSTEM AXIAL ADJUSTABLE 12P (M) HOUSING	PBT+GF	BLACK	1
	②	7158-5735	1.5 SYSTEM AXIAL ADJUSTABLE 12P (M) FRONT TPA	PBT	NATURAL	1

NOTES

1. APPLICABLE TERMINAL PART NO. :7114-4100-02 ETC.
2. MATING PART NO. :7283-4848-30
3. COMPONENTS MUST BE ASSEMBLED IN THE POSITION SHOWN.
4. THIS DIMENSION SHOWS THE POSITION OF THE FRONT HOLDER ON SUB-ASSEMBLY



SECTION A-A

ISSUE MARK

CUSTOMER		CUSTOMER DWG. NO.		MATERIAL SPEC.		TREAT. & FIN.	
CUSTOMER PART NO.		CUSTOMER DWG. NO.		SEE TABLE			
OFFICE		TRIAL PART NO.		NAME			
VENDOR		X49882-A677		1.5 SYSTEM AXIAL ADJUSTABLE			
VENDOR NO.				12P (M) SUB ASS'Y			
DWG. TYPE		DWG. SOURCE		DWG. DATE		UNIT	
R		7282-4848-30 GP		04.21.04		mm	
APPROVED		CHECKED		DESIGN		DRAWN	
S. KAMATH		S. KAMATH		S. KAMATH		S. KAMATH	
DATE		DATE		DATE		DATE	
04.21.04		04.21.04		06.08.00		04.21.04	
PART NO.		CH. CODE		DWG. NO.		SET DWG. NO.	
7282-4848-30				7282-4848-30:R			
YAZAKI CORPORATION							

GENERAL TOLERANCE								
	10MAX	50MAX	100MAX	250MAX	2500VR	ANGLE	ECCENT	
A	±0.15	±0.2	±0.3	±0.5	±0.75	±30'	0.1	
B	±0.2	±0.3	±0.55	±0.95	±1.4	±30'	0.15	
⊙	±0.3	±0.5	±0.8	±1.4	±2	±30'	0.15	
SPECIFIED							MASS	9

LET	DATE	REVISION RECORD	NO.	CHKD
-	04.21.04	NEW	C04-A610	D. H