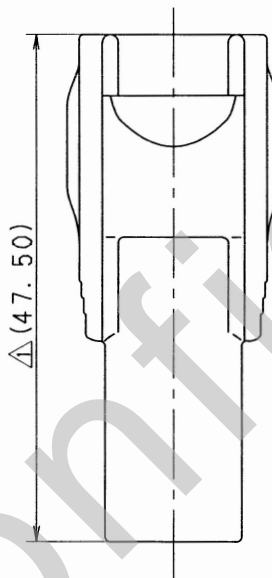
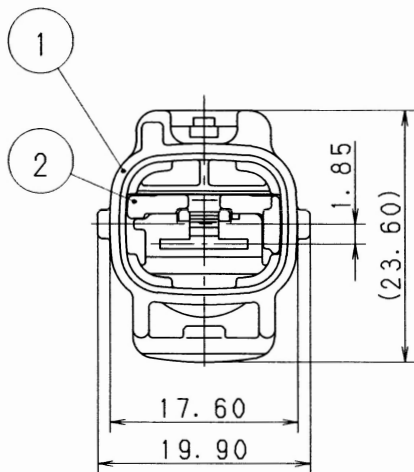
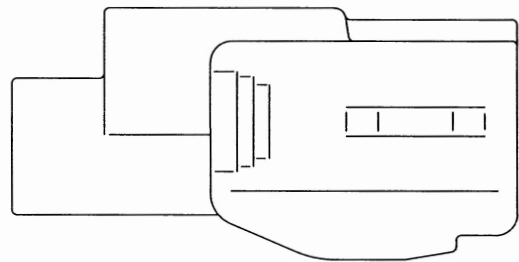


TABLE 1

YAZAKI SUB ASSEMBLY PART NO.	NO.	YAZAKI PART NO.	MATERIAL	COLOR	QTY.
7282-3013-10 ETC.	①	SEE TABLE 2	PBT	SEE TABLE 2	1
	②	7157-4358	PBT	NATURAL	1

TABLE 2

YAZAKI SUB ASSEMBLY PART NO.	YAZAKI PART NO.	COLOR
7282-3013. Δ	7182-3013	NATURAL
7282-3013-10. Δ	7182-3013-10	DARK GRAY
7282-3013-30. Δ	7182-3013-30	BLACK
7282-3013-40. Δ	7182-3013-40	LIGHT GRAY
7282-3013-50. Δ	7182-3013-50	ORANGE
7282-3013-60. Δ	7182-3013-60	GREEN
7282-3013-80. Δ	7182-3013-80	BROWN
7282-3013-90. Δ	7182-3013-90	BLUE



NOTES

1. MATING PART NO. : 7283-3013-10 ETC.
2. APPLICABLE TERMINAL NO. : 7114-6045 ETC.
3. APPLICABLE SEAL RUBBER NO. : 7157-3854 ETC.

注記

1. 嵌合相手品番 : 7283-3013-10 ETC.
2. 適用端子品番 : 7114-6045 ETC.
3. 適用ゴム栓品番 : 7157-3854 ETC.

ISSUE MARK

Δ	96.12.21	ADDED PART NO. & CHANGED FORM. Δ	C96-N209	M. T	CUSTOMER	CUSTOMER PART NO.	CUSTOMER DWG NO.	MATL. SPEC.	SEE TABLE 1	TREAT. & FIN.																				
	90.06.27	NEW	C90-L741	H. W	OFFICE		TRIAL PART NO.	NAME	312 1P SEALED CONNECTOR																					
LET	DATE	REVISION RECORD	NO.	CHKD	VENDOR			HOUSING MALE SUB ASSEMBLY																						
GENERAL TOLERANCE					VENDOR NO.																									
	10MAX	50MAX	100MAX	250MAX	250QVR	ANGLE	ECCENT	DWG TYPE	DWG SOURCE	DWG DATE	UNIT	SCL	ANGLE	PART NO.	7282-3013-10 ETC.															
A	± 0.15	± 0.2	± 0.3	± 0.5	± 0.75	$\pm 30'$	0.1	R	NEW	90.06.27	mm	$\Delta 2/1$	3	CH. CODE																
B	± 0.2	± 0.3	± 0.55	± 0.95	± 1.4	$\pm 30'$	0.1	APPROVED	CHECKED	CHECKED	DESIGN	DRAWN	DWG NO.	7282-3013-10:R	SET DWG NO.															
C	± 0.3	± 0.5	± 0.8	± 1.4	± 2	$\pm 30'$	0.15				YAMAMOTO	AKIMOTO																		
SPECIFIED					MASS	96.12.27					96.12.25					89.08.02					96.12.21					YAZAKI CORPORATION				