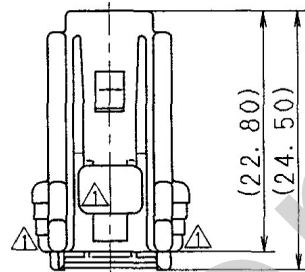
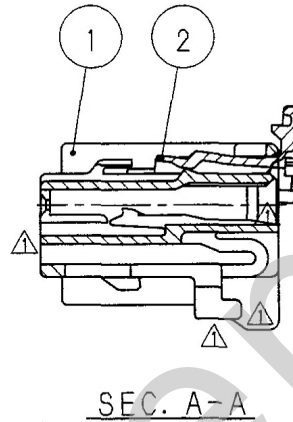
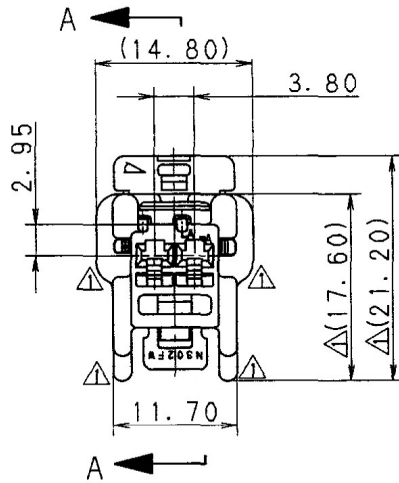


SUB ASSEMBLY PART NO. AND CH. CODE	NO.	PART NO. AND CH. CODE	MATERIAL	COLOR	QTY.
7223-6710, $\square$	①	7123-6710	PBT	NATURAL	1
	②	7157-6131-30	PP	BLACK	1



注記

- 1. 嵌合相手品番 : 7222-6710
- 2. 通用端子品番 : 7116-1820-02 ETC.

NOTES

- 1. MATING PART NO. : 7222-6710
- 2. APPLICABLE TERMINAL NO. : 7116-1820-02 ETC.

ISSUE MARK

CUSTOMER										MATL. SPEC.		TREAT. & FIN.			
CUSTOMER PART NO.										SEE TABLE					
CUSTOMER DWG NO.										NAME					
TRIAL PART NO.										NS TYPE CONNECTOR HOUSING					
VENDOR										2P SUB ASSEMBLY FEMALE					
VENDOR NO.															
GENERAL TOLERANCE										PART NO.					
	10MAX	50MAX	100MAX	250MAX	2500VR	ANGLE	ECCENT	DWG TYPE	DWG SOURCE	DWG DATE	UNIT	SCL	ANGLE	7223-6710, $\square$	
A	±0.15	±0.2	±0.3	±0.5	±0.75	±30'	0.1	R	NEW	93.04.29	mm	2/1	3	CH. CODE	
B	±0.2	±0.3	±0.55	±0.95	±1.4	±30'	0.1	APPROVED	CHECKED	CHECKED	DESIGN	DRAWN	DWG NO.		
③	±0.3	±0.5	±0.8	±1.4	±2	±30'	0.15				M. TSUJI	YOSHIDA	7223-6710:R		
SPECIFIED										SET DWG NO.		YAZAKI CORPORATION			
MASS															
99.04.20															
99.04.16															
99.04.12															
93.02.09															
99.04.08															