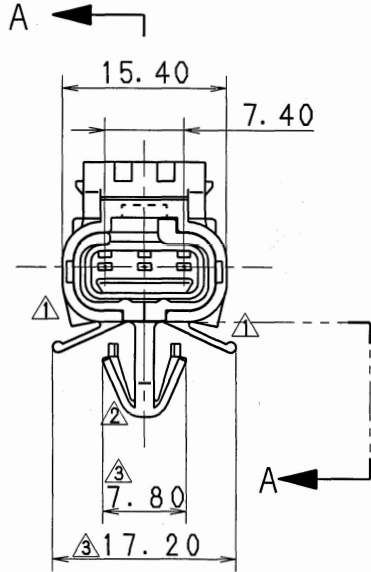
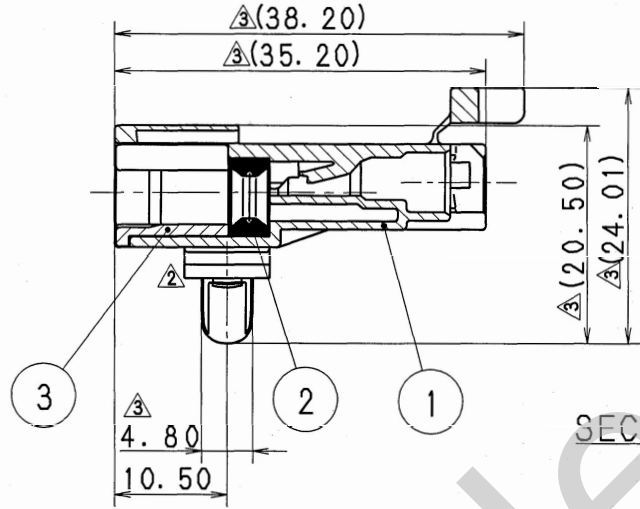
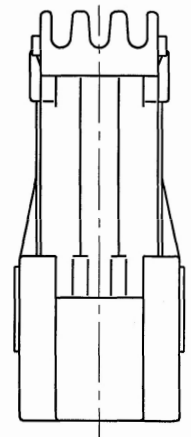


△ SUB ASSEMBLY PART NO. AND CH. CODE	NO.	PART NO. AND CH. CODE	△ PART NAME	MATERIAL	COLOR	QTY.
7222-7735	①	7122-7735	HOUSING 3PM (W)	PBT	NATURAL	1
	②	7137-2531-80	LIP PACKING 3PM	NBR	BROWN	1
	③	7157-7425-70	PACKING HOLDER 3PM (Y)	△ NYLON-6	YELLOW	1



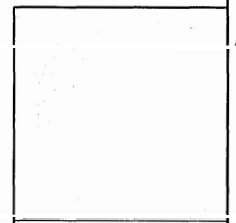
注記

- 1) かん合メス ハウジング品番: 7123-7735
- 2) 通用オス ターミナル品番: 7114-1456

△ NOTES

- 1) MATING FEMALE HOUSING NO. : 7123-7735
- 2) APPLICABLE MALE TERMINAL NO. : 7114-1456

SEC. A-A



△ 13/06/03	CHANGED MATERIAL INDICATION ETC.	C13-Z259	J. B									ISSUE MARK			
△ 06/07/12	ADDED DIMENSIONS, ETC.	C06-Z800	Y. I	CUSTOMER				MATL. SPEC. △ SEE TABLE				TREAT. & FIN.			
△ 90/11/19	CHANGED DIMENSION	C90-7688	甲斐	CUSTOMER PART NO.				CUSTOMER DWG NO.							
△ 88/10/07	CHANGED FORM	8MC-0850	塚本	OFFICE				NAME △ YV TYPE HOUSING							
△ 87/07/01	NEW	7MC-0310	大高	VENDOR				TRIAL PART NO.							
LET	DATE	REVISION RECORD	NO.	CHKD	VENDOR NO.				3PM (W) SUB ASSEMBLY						
△ GENERAL TOLERANCE				DWG TYPE				PART NO. CH. CODE							
	10MAX	50MAX	100MAX	250MAX	250OVR	ANGLE	ECCENT	R	NEW	87/07/01	mm	2:1	3	7222-7735	
A	±0.15	±0.2	±0.3	±0.5	±0.75	±30'	0.1	APPROVED	CHECKED	CHECKED	DESIGN	DRAWN	7222-7735:R		
B	±0.2	±0.3	±0.55	±0.95	±1.4	±30'	0.1	Y. SASAKI	_____	K. URANO	OHTAKA	J. BINALLA	SET DWG NO.		
③	±0.3	±0.5	±0.8	±1.4	±2	±30'	0.15	13/06/03	_____	13/06/03	87/07/01	13/06/03	YAZAKI CORPORATION		
SPECIFIED				MASS				g							