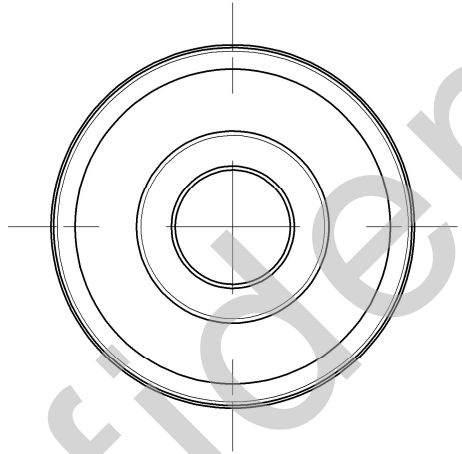
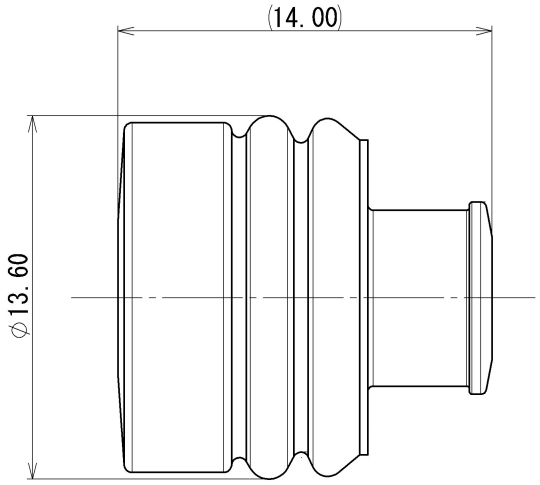


RUBBER PART GENERAL TOLERANCE.				
PART DIM.	1	2	③	
0 TO 3	±0.2	±0.3	±0.4	
3 TO 6	±0.2	±0.4	±0.5	
6 TO 10	±0.3	±0.5	±0.6	
10 TO 18	±0.3	±0.6	±0.8	
18 TO 30	±0.4	±0.8	±1.0	
30 TO 50	±0.5	±1.0	±1.5	
50 TO 80	±0.6	±1.2	±2.0	
80 TO 120	±0.7	±1.4	±2.5	
120 TO 180	±0.8	±1.6	±3.0	
180 TO 250	±1.0	±2.0	±4.0	
250 TO 315	±1.2	±2.5	±5.0	
315 TO 400	±1.5	±3.0	±6.0	
400 TO 500	±1.8	±3.5	±7.0	
500 OVER	±0.4 %	±0.8 %	±1.5 %	



注記

△ 1. 適用電線サイズ : AVX/AVX-f/AEX 8.0

NOTE

△ 1. APPLICABLE WIRE SIZE : AVX/AVX-f/AEX 8.0

ISSUE MARK

					CUSTOMER					MATL. SILICONE RUBBER			TREAT. & FIN.											
					CUSTOMER PART NO.					SPEC. (RED-IRON)														
△ 2018/09/28					CHANGED NOTES, ETC.					CUSTOMER DWG NO.					NAME 375 TYPE RUBBER STOPPER (L SIZE)									
2005/11/25					NEW					OFFICE					TRIAL PART NO. or PRODUCT NO.									
LET DATE					REVISION RECORD NO.					VENDOR														
GENERAL TOLERANCE										VENDOR NO.														
	10MAX	50MAX	100MAX	250MAX	250QVR	ANGLE	ECCENT	DWG TYPE	DWG SOURCE	DWG DATE	UNIT	SCL	ANGLE	PART NO.	7158-3610-80									
A	±0.15	±0.2	±0.3	±0.5	±0.75	±0.5°	0.1	R	NEW	2005/11/25	mm	5:1	3	CH. CODE	7158-3610-80									
B	±0.2	±0.3	±0.55	±0.95	±1.4	±1.0°	0.1	APPROVED	CHECKED	CHECKED	DESIGN	DRAWN	DWG NO.	7158-3610-80:R	SET DWG NO.									
C	±0.3	±0.5	±0.8	±1.4	±2	±1.5°	0.15	N. TAGUCHI	K. FUKUDA		M. SUZUKI	Y. MAEDA	YAZAKI Corporation											
SPECIFIED							MASS	△ (1.3) g								A3								
					2018/09/28					2018/09/28					2005/10/31					2018/09/28				