

RUBBER PART GENERAL TOLERANCE			
PART DIM.	1	2	③
0 TO 3	± 0.2	± 0.3	± 0.4
3 TO 6	± 0.2	± 0.4	± 0.5
6 TO 10	± 0.3	± 0.5	± 0.6
10 TO 18	± 0.3	± 0.6	± 0.8
18 TO 30	± 0.4	± 0.8	± 1.0
30 TO 50	± 0.5	± 1.0	± 1.5
50 TO 80	± 0.6	± 1.2	± 2.0
80 TO 120	± 0.7	± 1.4	± 2.5
120 TO 180	± 0.8	± 1.6	± 3.0
180 TO 250	± 1.0	± 2.0	± 4.0
250 TO 315	± 1.2	± 2.5	± 5.0
315 TO 400	± 1.5	± 3.0	± 6.0
400 TO 500	± 1.8	± 3.5	± 7.0
500 OVER	± 0.4 %	± 0.8 %	± 1.5 %

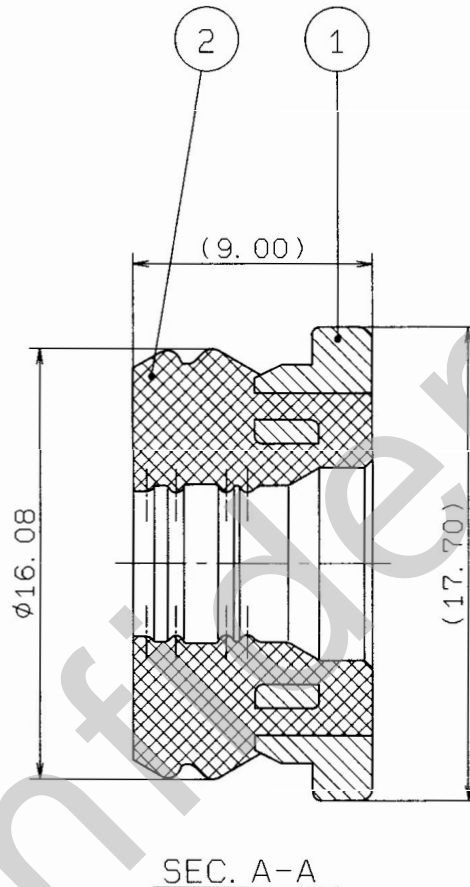
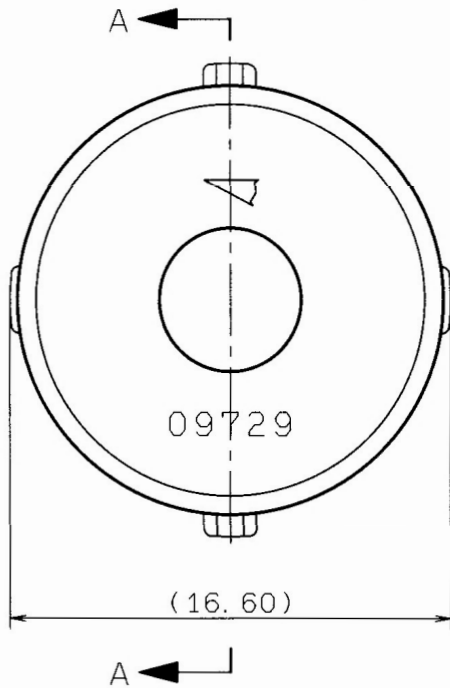
YAZAKI PART NO.	NO.	YAZAKI PART NO.	MATERIAL	COLOR	QTY.
7158-3181-40	①	7158-4044-30	PBT	BLACK	1
	②		SILICONE RUBBER	LIGHT GRAY	1

注記

1. 適用電線サイズ: AVX, AVXF 10Sq

NOTE

1. APPLICABLE TERMINAL SIZE: AVX, AVXF 10Sq



ISSUE MARK

				CUSTOMER				MATL. SPEC. SEE TABLE				TREAT. & FIN.				
				CUSTOMER PART NO.				CUSTOMER DWG NO.				NAME T375 SEALED				
97.06.09 NEW C97-M150 H.K				OFFICE				TRIAL PART NO.				REAR HOLDER+RUBBER STOPPER(M)				
LET DATE REVISION RECORD NO. CHKD				VENDOR				VENDOR NO.								
GENERAL TOLERANCE												PART NO. 7158-3181-40				
	10MAX	50MAX	100MAX	250MAX	2500VR	ANGLE	ECCENT	DWG TYPE	DWG SOURCE	DWG DATE	UNIT	SCL	ANGLE	CH. CODE	SET DWG NO.	
A	±0.15	±0.2	±0.3	±0.5	±0.75	±30'	0.1	R	NEW	97.06.09	mm	5/1	3	7158-3181-40:R		
B	±0.2	±0.3	±0.55	±0.95	±1.4	±30'	0.1	APPROVED	CHECKED	CHECKED	DESIGN	DRAWN				
©	±0.3	±0.5	±0.8	±1.4	±2	±30'	0.15	加藤 山梨 翔		H. TANISHITA		TAKEUCHI 極山?				
SPECIFIED RUBBER PART GENERAL TOLERANCE 3							MASS g		97.06.23		97.06.19		97.06.10		97.02.06 97.06.09	
												YAZAKI CORPORATION				