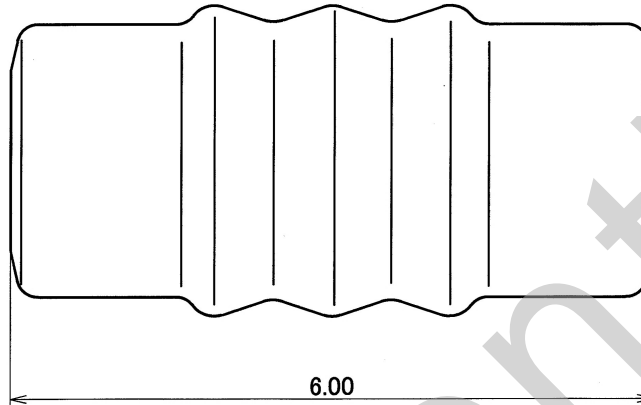
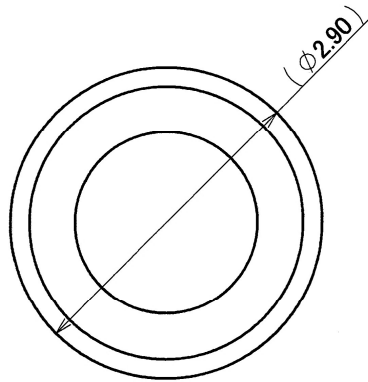


1

2

3



RUBBER PART GENERAL TOLERANCE			
PART DIM.	1	2	③
0 TO 3	± 0.2	± 0.3	± 0.4
3 TO 6	± 0.2	± 0.4	± 0.5
6 TO 10	± 0.3	± 0.5	± 0.6
10 TO 18	± 0.3	± 0.6	± 0.8
18 TO 30	± 0.4	± 0.8	± 1.0
30 TO 50	± 0.5	± 1.0	± 1.5
50 TO 80	± 0.6	± 1.2	± 2.0
80 TO 120	± 0.7	± 1.4	± 2.5
120 TO 180	± 0.8	± 1.6	± 3.0
180 TO 250	± 1.0	± 2.0	± 4.0
250 TO 315	± 1.2	± 2.5	± 5.0
315 TO 400	± 1.5	± 3.0	± 6.0
400 TO 500	± 1.8	± 3.5	± 7.0
500 OVER	± 0.4 %	± 0.8 %	± 1.5 %

NOTES

- COLOR : GRAY.
- MATERIAL : SILICONE RUBBER.
- APPLICABLE CONNECTOR PARTS NO. : 7282-8850-30, 7283-8850-30 ETC.

注記

- 色: グレー
- 材料: シリコン
- 適用コネクタ: 7282-8850-30, 7283-8850-30 ETC.

ISSUE MARK

		CUSTOMER		MATL. SPEC.		TREAT. & FIN.	
		CUSTOMER PART NO.		SEE NOTES			
		CUSTOMER DWG NO.		NAME RH TYPE SEALING PLUG			
01/10/11	NEW	C01-Y060	M.T	OFFICE	TRIAL PART NO.		
LET	DATE	REVISION RECORD	NO.	VENDOR	X30158-T092		
GENERAL TOLERANCE				VENDOR NO.			
	10MAX	50MAX	100MAX	250MAX	2500VR	ANGLE	ECCENT
(A)	±0.15	±0.2	±0.3	±0.5	±0.75	±30'	0.1
B	±0.2	±0.3	±0.55	±0.95	±1.4	±30'	0.1
C	±0.3	±0.5	±0.8	±1.4	±2	±30'	0.15
SPECIFIED		MASS		DWG TYPE		DWG SOURCE	
		g		R		NEW	
		01.10.16		CHECKED		CHECKED	
				DESIGN		DRAWN	
				SUGIYAMA		YAMAGUCHI	
				01/04/16		01/10/11	
				PART NO. 7158-3169-40		CH. CODE	
				DWG NO. 7158-3169-40:R		SET DRW NO.	
YAZAKI CORPORATION							

1

2

3