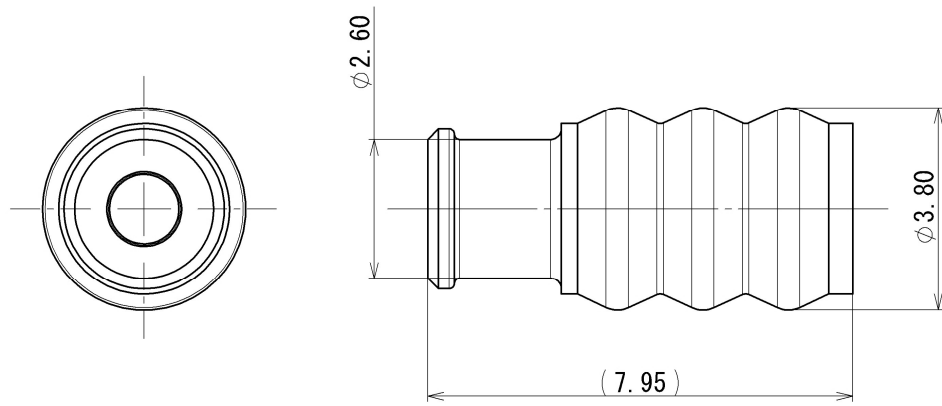


RUBBER PART		GENERAL TOLERANCE		
PART DIM.		1	2	③
0 TO 3		±0.2	±0.3	±0.4
3 TO 6		±0.2	±0.4	±0.5
6 TO 10		±0.3	±0.5	±0.6
10 TO 18		±0.3	±0.6	±0.8
18 TO 30		±0.4	±0.8	±1.0
30 TO 50		±0.5	±1.0	±1.5
50 TO 80		±0.6	±1.2	±2.0
80 TO 120		±0.7	±1.4	±2.5
120 TO 180		±0.8	±1.6	±3.0
180 TO 250		±1.0	±2.0	±4.0
250 TO 315		±1.2	±2.5	±5.0
315 TO 400		±1.5	±3.0	±6.0
400 TO 500		±1.8	±3.5	±7.0
500 OVER		±0.4 %	±0.8 %	±1.5 %



NOTES

- ③ 1. APPLICABLE WIRE SIZE : IVSSH 0.5f~0.75f
CAVS 0.5~0.85
CIVUS 0.75
CAVUS 0.85
- △ 2. PART NUMBERS IN PARENTHESIS SHALL BE USED FOR AIR BAG(A/B) CIRCUITS AND OTHER CIRCUITS DESIGNATED FOR SPECIAL MONITORING.

注記

- ③ 1. 適用電線サイズ : IVSSH 0.5f~0.75f
CAVS 0.5~0.85
CIVUS 0.75
CAVUS 0.85
- △ 2. ()内品番は、エアバック(A/B)回路及び特別管理回路に使用する時に適用すること。

③	2018/09/28	ADDED APPLICABLE WIRE SIZE, ETC.	C18-P258	Y. M	CUSTOMER					MATL. SILICONE RUBBER	TREAT. & FIN.				
②	2002/02/22	CHANGED NOTE	C02-X263	K. U	CUSTOMER PART NO.					SPEC. (BROWN)					
①	1998/05/29	ADDED A/B PART NO.	C98-L988	M. K	CUSTOMER DWG NO.					NAME △ 1.0 TYPE WIRE SEAL					
	1996/09/13	NEW	C96-7033	M. K	OFFICE					TRIAL PART NO. or PRODUCT NO.					
LET	DATE	REVISION RECORD	NO.	CHKD	VENDOR										
GENERAL TOLERANCE					VENDOR NO.										
	10MAX	50MAX	100MAX	250MAX	250OVR	ANGLE	ECCENT	DWG TYPE	DWG SOURCE	DWG DATE	UNIT	SCL	ANGLE	PART NO.	CH. CODE
A	±0.15	±0.2	±0.3	±0.5	±0.75	±0.5°	0.1	R	NEW	1996/09/13	mm	10:1	3	△ 7158-3121-80 (7B58-3121-80)	
B	±0.2	±0.3	±0.55	±0.95	±1.4	±1.0°	0.1	APPROVED	CHECKED	CHECKED	DESIGN	DRAWN	DWG NO.	7158-3121-80:R	SET DWG NO.
C	±0.3	±0.5	±0.8	±1.4	±2	±1.5°	0.15	N. TAGUCHI	K. FUKUDA		KOUMATSU	Y. MAEDA	YAZAKI Corporation		
SPECIFIED					MASS						2018/09/28 2018/09/28 1996/07/12 2018/09/28				
					△ (0.1) g						A3				