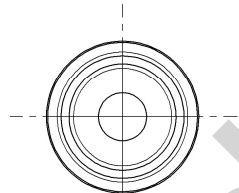
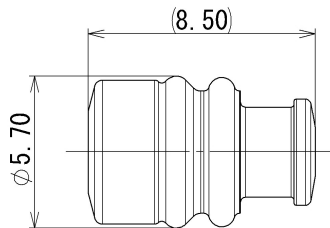


RUBBER PART GENERAL TOLERANCE				
PART DIM.	1	2	③	
0 TO 3	±0.2	±0.3	±0.4	
3 TO 6	±0.2	±0.4	±0.5	
6 TO 10	±0.3	±0.5	±0.6	
10 TO 18	±0.3	±0.6	±0.8	
18 TO 30	±0.4	±0.8	±1.0	
30 TO 50	±0.5	±1.0	±1.5	
50 TO 80	±0.6	±1.2	±2.0	
80 TO 120	±0.7	±1.4	±2.5	
120 TO 180	±0.8	±1.6	±3.0	
180 TO 250	±1.0	±2.0	±4.0	
250 TO 315	±1.2	±2.5	±5.0	
315 TO 400	±1.5	±3.0	±6.0	
400 TO 500	±1.8	±3.5	±7.0	
500 OVER	±0.4 %	±0.8 %	±1.5 %	



注記

- ③ 1. 適用電線サイズ : AVSS 2  
 \_\_\_\_\_  
 AVS 1.25~2  
 \_\_\_\_\_  
 HFSS 2  
 \_\_\_\_\_  
 IVSSH 2f  
 \_\_\_\_\_
- ③ 2. ( ) 内品番は、エアバック (A/B) 回路及び特別  
 \_\_\_\_\_  
 管理回路に使用する時に適用すること。  
 \_\_\_\_\_

NOTES

- ③ 1. APPLICABLE WIRE SIZE : AVSS 2  
 \_\_\_\_\_  
 AVS 1.25~2  
 \_\_\_\_\_  
 HFSS 2  
 \_\_\_\_\_  
 IVSSH 2f  
 \_\_\_\_\_
- ③ 2. ( ) PART NO. IS USED FOR PARTS ASSOCIATED  
 \_\_\_\_\_  
 WITH A/B CIRCUITS OR OTHER SPECIFIED CIRCUIT.  
 \_\_\_\_\_

③	2018/09/10	ADDED APPLICABLE WIRE SIZE, ETC.	C18-P257	Y. M	CUSTOMER				MATL. SILICONE RUBBER	TREAT. & FIN.						
②	2005/01/27	CHANGED NOTE, ETC.	C05-Z155	H. T	CUSTOMER PART NO.				SPEC. (DARK BROWN)							
①	1996/08/02	ADDED A/B PART NO.	C96-M438	A. Y	CUSTOMER DWG NO.				NAME ③ 2.3 II 6mm pitch RUBBER							
	1995/08/24	NEW	C95-M259	K. O	OFFICE				TRIAL PART NO. or PRODUCT NO.							
LET	DATE	REVISION RECORD	NO.	CHKD	VENDOR				STOPPER (L SIZE)							
GENERAL TOLERANCE					VENDOR NO.				PART NO. ③ 7158-3008-80 (7B58-3008-80)							
	10MAX	50MAX	100MAX	250MAX	250OVR	ANGLE	ECCENT	DWG TYPE	DWG SOURCE	DWG DATE	UNIT	SCL	ANGLE	CH. CODE	DWG NO.	SET DWG NO.
A	±0.15	±0.2	±0.3	±0.5	±0.75	±0.5°	0.1	R	NEW	1995/08/03	mm	5:1	3	7158-3008-80:R		
B	±0.2	±0.3	±0.55	±0.95	±1.4	±1.0°	0.1	APPROVED	CHECKED	CHECKED	DESIGN	DRAWN				
C	±0.3	±0.5	±0.8	±1.4	±2	±1.5°	0.15	N. TAGUCHI	K. FUKUDA		MAEDA	Y. MAEDA				
SPECIFIED					MASS				YAZAKI Corporation				A3			
					③ (0.2) g				2018/09/10				2018/09/10	1994/09/27	2018/09/10	