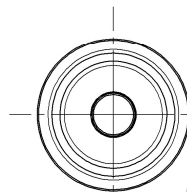
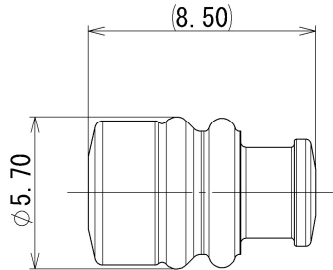


| RUBBER PART GENERAL TOLERANCE | | | | | |
|-------------------------------|--------|--------|--------|--|--|
| PART DIM. | 1 | 2 | ③ | | |
| 0 TO 3 | ±0.2 | ±0.3 | ±0.4 | | |
| 3 TO 6 | ±0.2 | ±0.4 | ±0.5 | | |
| 6 TO 10 | ±0.3 | ±0.5 | ±0.6 | | |
| 10 TO 18 | ±0.3 | ±0.6 | ±0.8 | | |
| 18 TO 30 | ±0.4 | ±0.8 | ±1.0 | | |
| 30 TO 50 | ±0.5 | ±1.0 | ±1.5 | | |
| 50 TO 80 | ±0.6 | ±1.2 | ±2.0 | | |
| 80 TO 120 | ±0.7 | ±1.4 | ±2.5 | | |
| 120 TO 180 | ±0.8 | ±1.6 | ±3.0 | | |
| 180 TO 250 | ±1.0 | ±2.0 | ±4.0 | | |
| 250 TO 315 | ±1.2 | ±2.5 | ±5.0 | | |
| 315 TO 400 | ±1.5 | ±3.0 | ±6.0 | | |
| 400 TO 500 | ±1.8 | ±3.5 | ±7.0 | | |
| 500 OVER | ±0.4 % | ±0.8 % | ±1.5 % | | |



注記

- ③ 1. 適用電線サイズ : AVS 0.5~0.85
 AVSS/GAVS 1.25
 CHFUS 1.5 HFSS 1~1.5
 CIVUS 1.25~1.5
 IVSSH 1.25
- △ 2. () 内品番は、エアバック (A/B) 回路及び特別管理回路に
 使用する時に適用すること。

NOTES

- ③ 1. APPLICABLE WIRE SIZE : AVS 0.5~0.85
 AVSS/GAVS 1.25
 CHFUS 1.5 HFSS 1~1.5
 CIVUS 1.25~1.5
 IVSSH 1.25
- △ 2. () PART NO. IS USED FOR PARTS ASSOCIATED WITH A/B CIRCUITS
 OR OTHER SPECIFIED CIRCUIT.

| | | | | | | | |
|-------------------|------------|---|----------|--------|-----------|-------|--------|
| ③ | 2018/09/10 | ADDED APPLICABLE WIRE SIZE, ETC. | C18-P257 | Y. M | | | |
| △ | 2005/01/27 | CHANGED NOTE, ETC. | C05-Z155 | H. T | | | |
| △ | 2004/04/08 | CHANGED NOTE, NAME & ADDED NOTE, A/B PART NO. | C04-X219 | H. T | | | |
| | 1995/08/24 | NEW | C95-M259 | K. O | | | |
| LET | DATE | REVISION RECORD | NO. | CHKD | | | |
| GENERAL TOLERANCE | | | | | | | |
| | 10MAX | 50MAX | 100MAX | 250MAX | 250OVR | ANGLE | ECCENT |
| A | ±0.15 | ±0.2 | ±0.3 | ±0.5 | ±0.75 | ±0.5° | 0.1 |
| B | ±0.2 | ±0.3 | ±0.55 | ±0.95 | ±1.4 | ±1.0° | 0.1 |
| C | ±0.3 | ±0.5 | ±0.8 | ±1.4 | ±2 | ±1.5° | 0.15 |
| SPECIFIED | | | | MASS | ③ (0.2) g | | |

| | | | | | |
|------------|-------------------|------------------|------------|-------------------------------|-------|
| CUSTOMER | CUSTOMER PART NO. | CUSTOMER DWG NO. | OFFICE | TRIAL PART NO. or PRODUCT NO. | |
| VENDOR | | VENDOR NO. | | | |
| DWG TYPE | DWG SOURCE | DWG DATE | UNIT | SCL | ANGLE |
| R | NEW | 1995/08/03 | mm | 5:1 | 3 |
| APPROVED | CHECKED | CHECKED | DESIGN | DRAWN | |
| N. TAGUCHI | K. FUKUDA | | MAEDA | Y. MAEDA | |
| 2018/09/10 | 2018/09/10 | | 1994/09/27 | 2018/09/10 | |

| | | |
|--------------------------------|-------------------------------|---------------|
| MATL. SPEC. | SILICONE RUBBER (DARK GRAY) | TREAT. & FIN. |
| NAME △ 2.3 II 6mm pitch RUBBER | | |
| STOPPER (M SIZE) | | |
| PART NO. CH. CODE | △ 7158-3007-10 (7B58-3007-10) | |
| DWG NO. | 7158-3007-10:R | SET DWG NO. |
| YAZAKI Corporation | | |

ISSUE MARK

A3