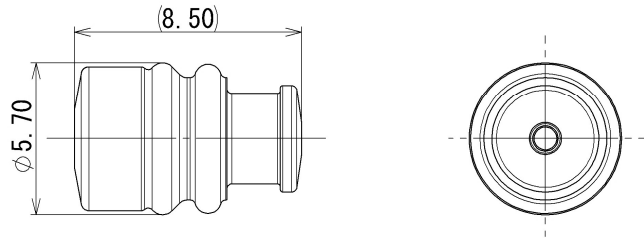


RUBBER PART GENERAL TOLERANCE				
PART DIM.	1	2	③	
0 TO 3	±0.2	±0.3	±0.4	
3 TO 6	±0.2	±0.4	±0.5	
6 TO 10	±0.3	±0.5	±0.6	
10 TO 18	±0.3	±0.6	±0.8	
18 TO 30	±0.4	±0.8	±1.0	
30 TO 50	±0.5	±1.0	±1.5	
50 TO 80	±0.6	±1.2	±2.0	
80 TO 120	±0.7	±1.4	±2.5	
120 TO 180	±0.8	±1.6	±3.0	
180 TO 250	±1.0	±2.0	±4.0	
250 TO 315	±1.2	±2.5	±5.0	
315 TO 400	±1.5	±3.0	±6.0	
400 TO 500	±1.8	±3.5	±7.0	
500 OVER	±0.4 %	±0.8 %	±1.5 %	



△ 注記

- 1. 取扱説明書No. : YPES-15-221
- 2. 本製品の性能は、JASO D616:2011版(分類2)を満足すること。

△ 3.

適用電線サイズ : AVSS/CAVS 0.3~0.85

AVS 0.3

HFSS 0.5 ~0.75

CHFUS 0.75~1.25

CIVUS 0.75~1.25

IVSSH 0.5f~0.75f

△ 4.

()内の品番はA/B回路及び特別管理回路に使用すること。

△ NOTES

- 1. HANDLING MANUAL NO. : YPES-15-221
- 2. THE PERFORMANCE OF THIS PRODUCT MUST BE IN ACCORDANCE WITH JASO D616:2011th EDITION (CLASSIFICATION 2).

△ 3.

APPLICABLE WIRE SIZE : AVSS/CAVS 0.3~0.85

AVS 0.3

HFSS 0.5~0.75

CHFUS 0.75~1.25

CIVUS 0.75~1.25

IVSSH 0.5f~0.75f

△ 4.

PART NUMBERS IN PARENTHESIS SHALL BE USED FOR AIR BAG(A/B) CIRCUITS AND OTHER CIRCUITS DESIGNATED FOR SPECIAL MONITORING.

△ 3	2018/09/10	ADDED APPLICABLE WIRE SIZE, ETC.	C18-P257	Y. M			
△ 2	2013/08/26	CHANGED NOTES	C13-Z316	A. Q			
△ 1	2005/01/27	CHANGED NOTE, ETC.	C05-Z155	H. T			
△ 1	1995/08/24	NEW	C95-M259	K. O			
LET	DATE	REVISION RECORD	NO.	CHKD			
GENERAL TOLERANCE							
	10MAX	50MAX	100MAX	250MAX	250OVR	ANGLE	ECCENT
A	±0.15	±0.2	±0.3	±0.5	±0.75	±0.5°	0.1
B	±0.2	±0.3	±0.55	±0.95	±1.4	±1.0°	0.1
C	±0.3	±0.5	±0.8	±1.4	±2	±1.5°	0.15
SPECIFIED							MASS
							△ (0.2) g

CUSTOMER	DWG TYPE			DWG SOURCE	DWG DATE	UNIT	SCL	ANGLE
CUSTOMER PART NO.	R			NEW	1995/08/03	mm	5:1	3
CUSTOMER DWG NO.	APPROVED			CHECKED	CHECKED	DESIGN	DRAWN	
OFFICE	N. TAGUCHI			K. FUKUDA		MAEDA	Y. MAEDA	
TRIAL PART NO. or PRODUCT NO.	2018/09/10			2018/09/10		1994/09/27	2018/09/10	

MATL. SILICONE RUBBER	TREAT. & FIN.
SPEC. (DARK BLUE)	
NAME △ 2.3 II 6mm pitch RUBBER	
STOPPER (S SIZE)	
PART NO. △ 7158-3006-90 (7B58-3006-90)	
CH. CODE	
DWG NO. 7158-3006-90:R	SET DWG NO.
YAZAKI Corporation	

ISSUE MARK

A3