

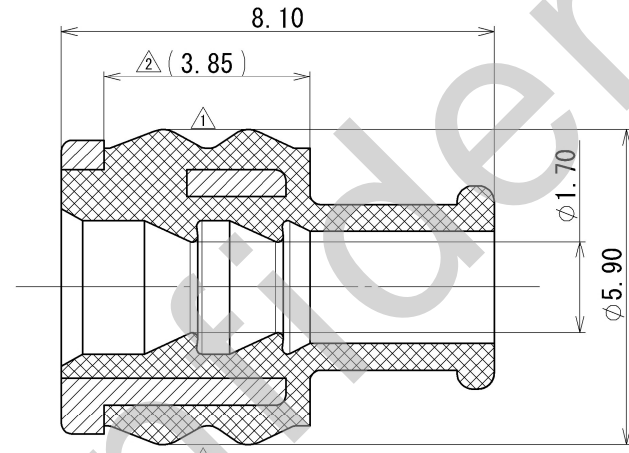
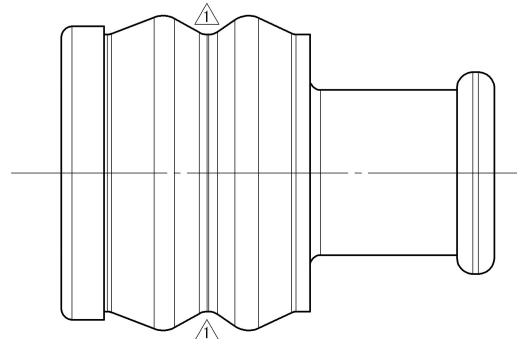
| 2 | NO. | PART NO. | PART NAME | MATERIAL | COLOR |
|--|-----|--------------|--------------|-----------------|-------|
| SUB ASSEMBLY PART NO. AND CH. CODE 7157-7899-90 △(7B57-7899-90) | ① | 7157-7898-80 | REAR STOPPER | PET-G | BROWN |
| | ② | — | SEAL RUBBER | SILICONE RUBBER | BLUE |

NOTES

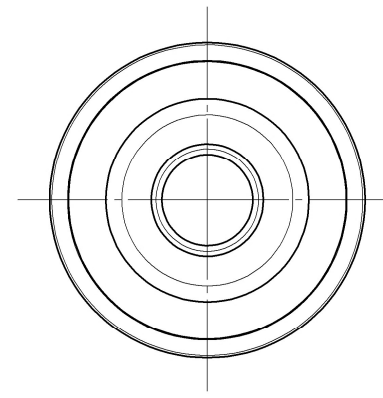
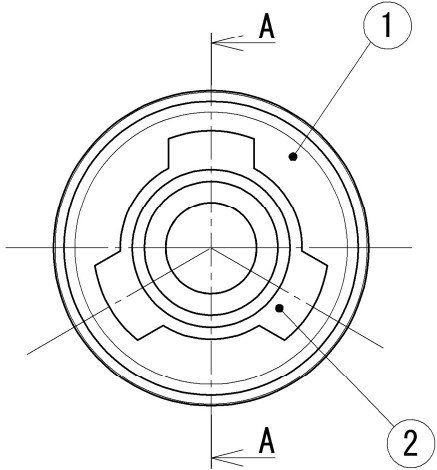
- ③ 1. APPLICABLE WIRE SIZE : AV 0.85~1.25
 _____ AVS/AEX (AVX) 1.25
 _____ ACTW 1.25f
 _____ AVSS 2.0
 _____ IVSSH 2.0f
- ② 2. IN THE CASE OF AIR BAG CIRCUITS AND SPECIAL CONTROL CIRCUITS USE PART NO. ().

注記

- ③ 1. 適用電線サイズ : AV 0.85~1.25
 _____ AVS/AEX (AVX) 1.25
 _____ ACTW 1.25f
 _____ AVSS 2.0
 _____ IVSSH 2.0f
- ② 2. エアバック回路及び特別管理回路に使用する場合は ()内の品番が、適用されます。



SEC. A-A



ISSUE MARK

| | | | | | | | | | | | | | | |
|-------------------|------------|----------------------------------|----------|--------|-------------------|-------------------------------|--------|------------|------------|--|--------------------|---------------|----------------|-------------|
| ③ | 2018/09/10 | ADDED APPLICABLE WIRE SIZE, ETC. | C18-P257 | Y. M | CUSTOMER | | | | | MATL. SPEC. | SEE TABLE | TREAT. & FIN. | | |
| ② | 2009/02/16 | ADDED NOTES, ETC. | C09-Z136 | T. W | CUSTOMER PART NO. | | | | | | | | | |
| ① | 1990/02/06 | CHANGED FORM | C90-L108 | S. Y | CUSTOMER DWG NO. | | | | | NAME △ SWP-TYPE SEAL RUBBER | | | | |
| | 1987/07/20 | NEW | 7MC-0372 | S. Y | OFFICE | TRIAL PART NO. or PRODUCT NO. | | | | 1P ASSEMBLY (太物用) | | | | |
| LET | DATE | REVISION RECORD | NO. | CHKD | VENDOR | | | | | | | | | |
| GENERAL TOLERANCE | | | | | VENDOR NO. | | | | | PART NO. △ 7157-7899-90 (7B57-7899-90) | | | | |
| | 10MAX | 50MAX | 100MAX | 250MAX | 2500VR | ANGLE | ECCENT | DWG TYPE | DWG SOURCE | DWG DATE | UNIT | SCL | ANGLE | CH. CODE |
| A | ±0.15 | ±0.2 | ±0.3 | ±0.5 | ±0.75 | ±0.5° | 0.1 | R | NEW | 1987/07/20 | mm | 10:1 | 3 | |
| B | ±0.2 | ±0.3 | ±0.55 | ±0.95 | ±1.4 | ±1.0° | 0.1 | APPROVED | CHECKED | CHECKED | DESIGN | DRAWN | DWG NO. | SET DWG NO. |
| ③ | ±0.3 | ±0.5 | ±0.8 | ±1.4 | ±2 | ±1.5° | 0.15 | N. TAGUCHI | K. FUKUDA | — | YAMADA | Y. MAEDA | 7157-7899-90:R | |
| SPECIFIED | | | | | MASS | 2018/09/10 | | | | | YAZAKI Corporation | | | |
| | | | | | △ (0.1) g | 2018/09/10 | | | | | A3 | | | |