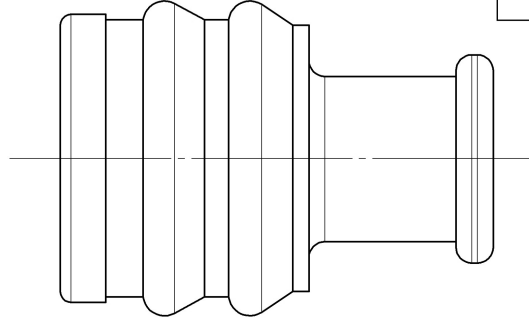


SUB ASSEMBLY PART NO.	NO.	PART NAME	PART NO.	MATERIAL
7157-7897-60	①	REAR STOPPER	7157-7810-80	△ PBT-G (BROWN)
	②	SEAL RUBBER	—	SILICONE RUBBER (GREEN)

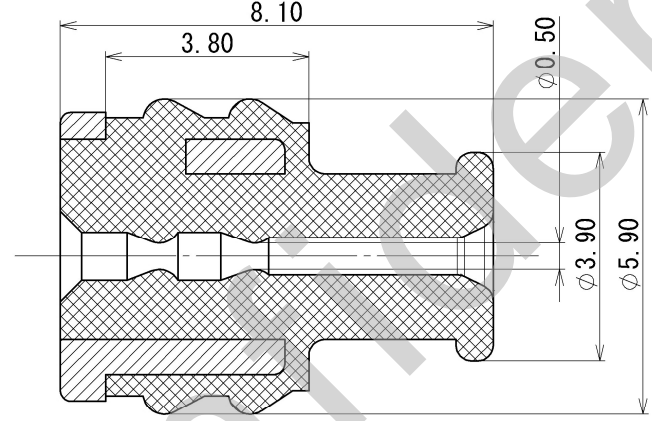
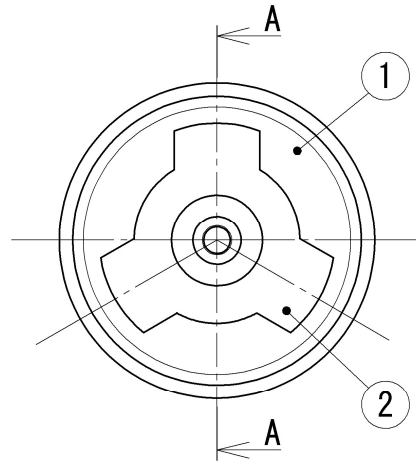


注記

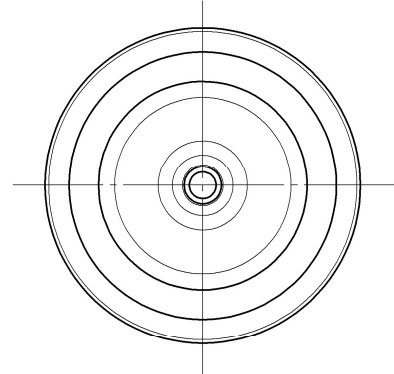
△ 1. 適用電線サイズ : CIVUS 0.35~0.75
IVSSH 0.35f~0.5f

NOTE

△ 1. APPLICABLE WIRE SIZE : CIVUS 0.35~0.75
IVSSH 0.35f~0.5f



SEC. A-A



ISSUE MARK

△	2018/09/10	ADDED APPLICABLE WIRE SIZE, ETC.	C18-P257	Y. M	CUSTOMER	MATL. SPEC.	SEE TABLE	TREAT. & FIN.
△	1994/11/07	CHANGED GENERAL TOLERANCE	C94-6509	K. O	CUSTOMER PART NO.			
	1988/08/20	NEW	8MC-1035	S. Y	CUSTOMER DWG NO.			
LET	DATE	REVISION RECORD	NO.	CHKD	OFFICE	NAME △ SWP-TYPE SEAL RUBBER		
△ GENERAL TOLERANCE					TRIAL PART NO. or PRODUCT NO.	1P ASSEMBLY (極細用)		
	10MAX	50MAX	100MAX	250MAX	2500VR	ANGLE	ECCENT	VENDOR NO.
A	±0.15	±0.2	±0.3	±0.5	±0.75	±0.5°	0.1	DWG TYPE
B	±0.2	±0.3	±0.55	±0.95	±1.4	±1.0°	0.1	R
◎	±0.3	±0.5	±0.8	±1.4	±2	±1.5°	0.15	NEW
SPECIFIED					MASS	DWG SOURCE	DWG DATE	UNIT
					△ (0.2) g	NEW	1988/08/20	mm
						APPROVED	CHECKED	SCL
						N. TAGUCHI	K. FUKUDA	10:1
								ANGLE
								3
						DESIGN	DRAWN	PART NO.
						YAMADA	Y. MAEDA	7157-7897-60
								CH. CODE
								7157-7897-60
								DWG NO.
								7157-7897-60:R
								SET DWG NO.
								YAZAKI Corporation
								A3