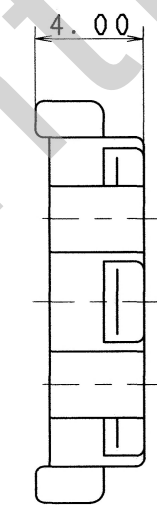
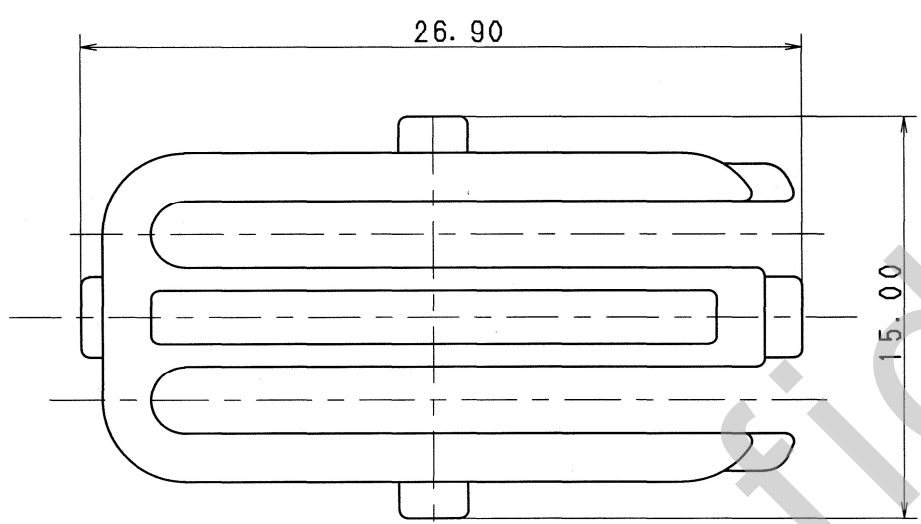


△ 注記
 1. 本部品は、部品番号7222-7484-40(-30)
 及び、7123-7484-40(-30)に装着される。

△ NOTE
 1. THIS PART SHALL BE ASSEMBLED TO 7222-7484-40(-30)
 AND 7123-7484-40(-30).



ISSUE MARK

										CUSTOMER			MATL. SPEC.		TREAT. & FIN.				
										CUSTOMER PART NO.			CUSTOMER DWG NO.		PBT (BROWN)				
										OFFICE			TRIAL PART NO.		NAME				
										VENDOR			VENDOR NO.		SWP-TYPE CONNECTOR				
										VENDOR NO.					REAR HOLDER 8P				
GENERAL TOLERANCE										DWG TYPE	DWG SOURCE	DWG DATE	UNIT	SCL	ANGLE	PART NO.	7157-7817-80		
	10MAX	50MAX	100MAX	250MAX	2500VR	ANGLE	ECCENT								CH. CODE				
A	±0.15	±0.2	±0.3	±0.5	±0.75	±30'	0.1	R	NEW	87/09/08	mm	5:1	3		DWG NO.	7157-7817-80:R			
B	±0.2	±0.3	±0.55	±0.95	±1.4	±30'	0.1	APPROVED	CHECKED	CHECKED	DESIGN	DRAWN			SET DWG NO.				
Ⓒ	±0.3	±0.5	±0.8	±1.4	±2	±30'	0.15				YAMADA	O. DAR							
SPECIFIED										MASS	g				YAZAKI CORPORATION				
										05.9.21		05.09.19		05.9.19		87/06/01		05/09/16	