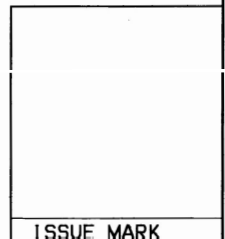
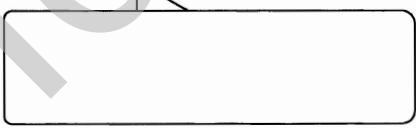
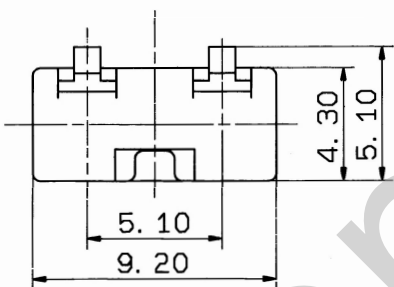


注記

1. 適用ハウジング 品番: 7123-7740-40, 7123-7741-80

NOTE

1. APPLICABLE HOUSING NO: 7123-7740-40, 7123-7741-80



ISSUE MARK

										CUSTOMER			MATL. SPEC.		PBT (ORANGE)		TREAT. & FIN.						
										CUSTOMER PART NO.			CUSTOMER DWG NO.										
										OFFICE			STDLIB NO.		NAME								
										VENDOR			VENDOR NO.		Z-TYPE CONNECTOR 4P F (GY), (BR)								
										VENDOR NO.					FRONT HOLDER								
GENERAL TOLERANCE										DWG TYPE		DWG SOURCE		DWG DATE		UNIT		SCL		ANGLE		PART NO.	
		10MAX	50MAX	100MAX	250MAX	250OVR	ANGLE	ECCENT	R		RENEW		89.07.03		mm		5/1		3		7157-7749-50		
A		±0.15	±0.2	±0.3	±0.5	±0.75	±30°	0.1	APPROVED		CHECKED		CHECKED		DESIGN		DRAWN		DWG NO.		TRIAL PART NO.		
B		±0.2	±0.3	±0.55	±0.95	±1.4	±30°	0.1	YASHIMA		KAI		89.07.03		89.07.03				7157-7749-50:R				
C		±0.3	±0.5	±0.8	±1.4	±2	±30°	0.15	YASHIMA		KAI		89.07.03		89.07.03				7157-7749-50:R				
SPECIFIED								WEIGHT		g		1		2		3		YAZAKI CORPORATION					