

RUBBER PART GENERAL TOLERANCE				
PART DIM.	1	2	③	
0 TO 3	±0.2	±0.3	±0.4	
3 TO 6	±0.2	±0.4	±0.5	
6 TO 10	±0.3	±0.5	±0.6	
10 TO 18	±0.3	±0.6	±0.8	
18 TO 30	±0.4	±0.8	±1.0	
30 TO 50	±0.5	±1.0	±1.5	
50 TO 80	±0.6	±1.2	±2.0	
80 TO 120	±0.7	±1.4	±2.5	
120 TO 180	±0.8	±1.6	±3.0	
180 TO 250	±1.0	±2.0	±4.0	
250 TO 315	±1.2	±2.5	±5.0	
315 TO 400	±1.5	±3.0	±6.0	
400 TO 500	±1.8	±3.5	±7.0	
500 OVER	±0.4 %	±0.8 %	±1.5 %	

注記

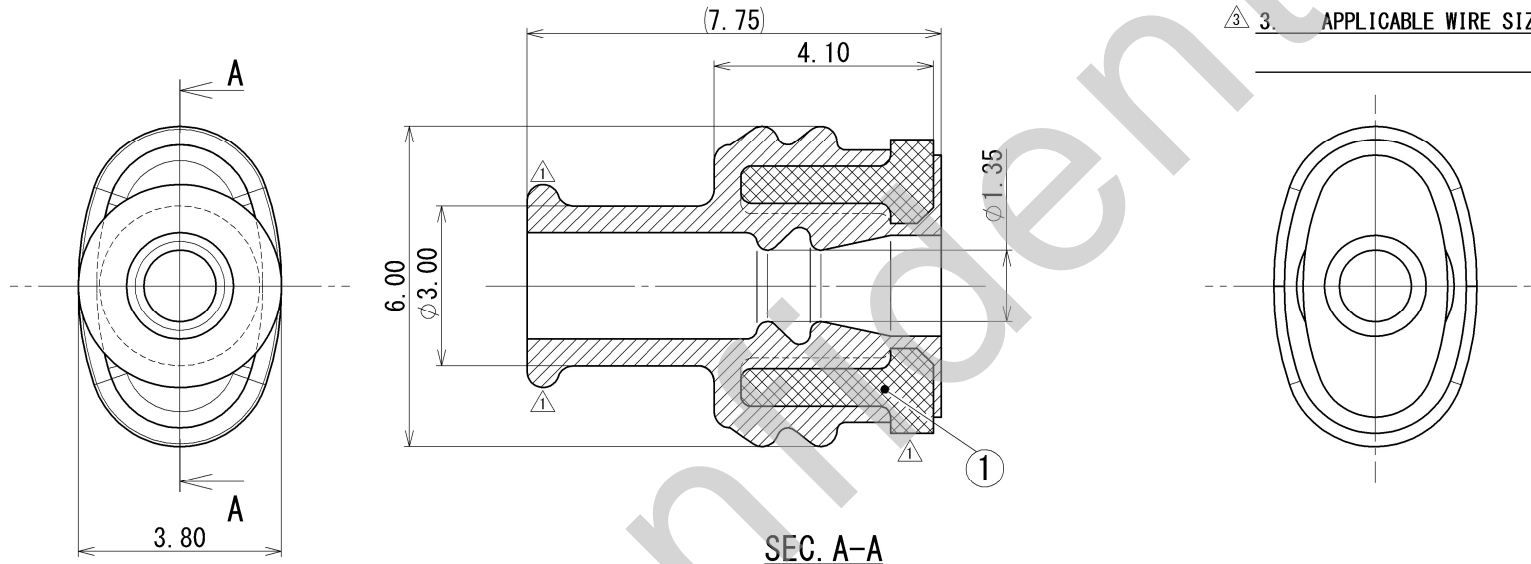
- 適用端子品番 : 7114-1680-02, 7116-1680-02
- 材質 : シリコンゴム (グリーン)
- ① : PET-G (ライトグレー)
- 適用電線サイズ : AVS 0.3~0.5, CAVS 0.85
IVSSH 0.75f

NOTES

- APPLICABLE TERMINAL NO. : 7114-1680-02, 7116-1680-02
- MATERIAL : SILICON RUBBER (GREEN)
- ① : PET-G (LIGHT GRAY)
- APPLICABLE WIRE SIZE : AVS 0.3~0.5, CAVS 0.85
IVSSH 0.75f

B

A



SEC. A-A

③	2018/09/10	ADDED APPLICABLE WIRE SIZE, ETC.	C18-P257	Y. M					ISSUE MARK						
②	2001/04/05	CORRECTION OF A CLERICAL ERROR	C01-X368	E. S	CUSTOMER				MATL. SPEC. SEE NOTES		TREAT. & FIN.				
①	1995/10/25	CHANGED FORM, ETC.	C95-M585	A. Y	CUSTOMER PART NO.				CUSTOMER DWG NO.						
	1990/09/25	NEW	C90-L993	S. I	OFFICE				TRIAL PART NO. or PRODUCT NO.		NAME ③ SSD SEAL RUBBER (THICK WIRE)				
LET	DATE	REVISION RECORD	NO.	CHKD	VENDOR				VENDOR NO.						
GENERAL TOLERANCE					DWG TYPE	DWG SOURCE	DWG DATE	UNIT	SCL	ANGLE	PART NO.				
	10MAX	50MAX	100MAX	250MAX	250OVR	ANGLE	ECCENT	R	NEW	1990/09/25	mm	10:1	3	CH. CODE	7157-3951-60
A	±0.15	±0.2	±0.3	±0.5	±0.75	±0.5°	0.1	APPROVED	CHECKED	CHECKED	DESIGN	DRAWN	DWG NO. 7157-3951-60:R		SET DWG NO.
B	±0.2	±0.3	±0.55	±0.95	±1.4	±1.0°	0.1	N. TAGUCHI	K. FUKUDA		ISHIZUKA	Y. MAEDA	YAZAKI Corporation		A3
C	±0.3	±0.5	±0.8	±1.4	±2	±1.5°	0.15	2018/09/10	2018/09/10		1989/04/14	2018/09/10			
SPECIFIED					MASS	③ (0.1) g									
GENERAL TOLERANCE 3															