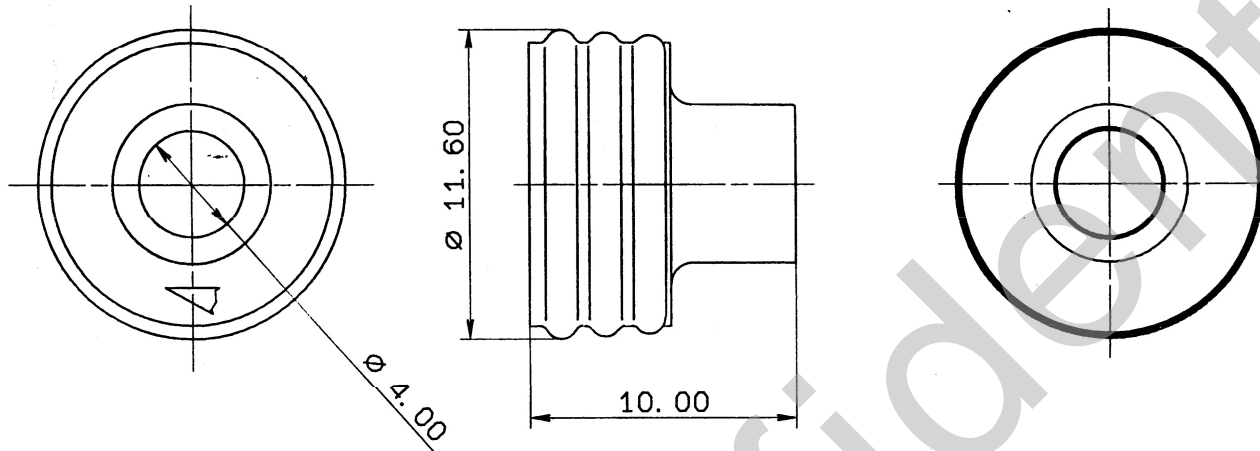


RUBBER PART GENERAL TOLERANCE			
PART DIM.	1	2	③
0 TO 3	± 0.2	± 0.3	± 0.4
3 TO 6	± 0.2	± 0.4	± 0.5
6 TO 10	± 0.3	± 0.5	± 0.6
10 TO 18	± 0.3	± 0.6	± 0.8
18 TO 30	± 0.4	± 0.8	± 1.0
30 TO 50	± 0.5	± 1.0	± 1.5
50 TO 80	± 0.6	± 1.2	± 2.0
80 TO 120	± 0.7	± 1.4	± 2.5
120 TO 180	± 0.8	± 1.6	± 3.0
180 TO 250	± 1.0	± 2.0	± 4.0
250 TO 315	± 1.2	± 2.5	± 5.0
315 TO 400	± 1.5	± 3.0	± 6.0
400 TO 500	± 1.8	± 3.5	± 7.0
500 OVER	± 0.4 %	± 0.8 %	± 1.5 %



注記

- 1) 適用ワイヤサイズ: AVS 5 ~ AV 8 トル.
- 2) 仕上り外径: $\phi 4.4 \sim 5.5$

NOTE

- 1) APPLICABLE WIRE SIZE: AVS 5 ~ AV 8.
- 2) OUT LINE: $\phi 4.4 \sim 5.5$

ISSUE MARK

CUSTOMER										MATL. SPEC.		NBR (BLACK)		TREAT. & FIN.							
CUSTOMER PART NO.					CUSTOMER DWG NO.					NAME		312 SEALED CONNECTOR									
90.11.04 NEW C90-M190 M.H OFFICE										STDLIB NO.		RUBBER STOPPER (L SIZE)									
LET	DATE	REVISION RECORD			NO.	CHKD	VENDOR			VENDOR NO.		PART NO. 7157-3854									
GENERAL TOLERANCE										DWG TYPE		DWG SOURCE		DWG DATE		UNIT		SCL		ANGLE	
	10MAX	50MAX	100MAX	250MAX	250OVR	ANGLE	ECCENT														
A	±0.15	±0.2	±0.3	±0.5	±0.75	±30'	0.1	R	NEW	90.11.04	mm	5/1	3	DWG NO. 7157-3854:R		TRIAL PART NO.					
B	±0.2	±0.3	±0.55	±0.95	±1.4	±30'	0.1	APPROVED	CHECKED	CHECKED	DESIGN	DRAWN		YAZAKI CORPORATION							
C	±0.3	±0.5	±0.8	±1.4	±2	±30'	0.15	加藤 渡部		YAMAMOTO	T. MAKITA										
SPECIFIED						WEIGHT						90.11.16		90.11.15		90.11.15		88.08.22		90.11.04	