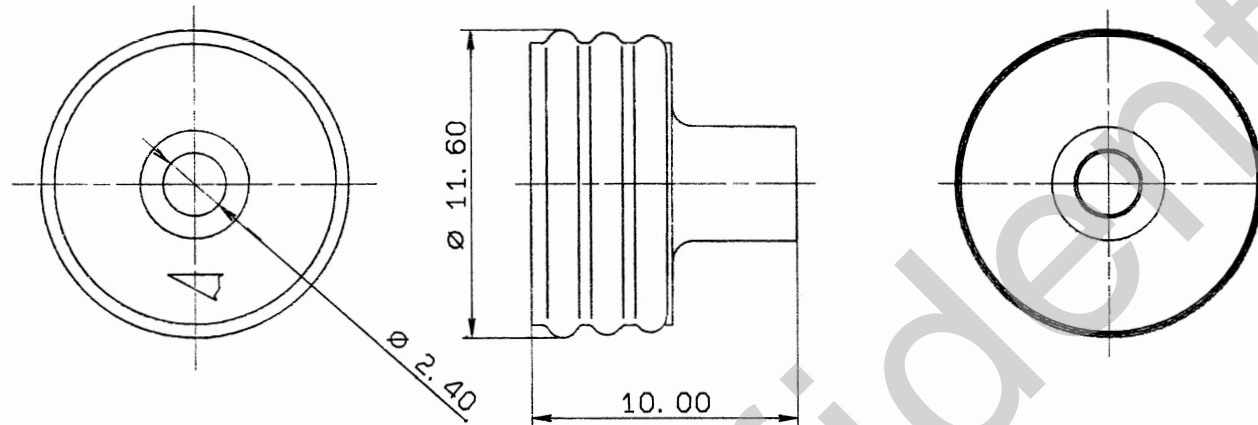


RUBBER PART GENERAL TOLERANCE			
PART DIM.	1	2	③
0 TO 3	± 0.2	± 0.3	± 0.4
3 TO 6	± 0.2	± 0.4	± 0.5
6 TO 10	± 0.3	± 0.5	± 0.6
10 TO 18	± 0.3	± 0.6	± 0.8
18 TO 30	± 0.4	± 0.8	± 1.0
30 TO 50	± 0.5	± 1.0	± 1.5
50 TO 80	± 0.6	± 1.2	± 2.0
80 TO 120	± 0.7	± 1.4	± 2.5
120 TO 180	± 0.8	± 1.6	± 3.0
180 TO 250	± 1.0	± 2.0	± 4.0
250 TO 315	± 1.2	± 2.5	± 5.0
315 TO 400	± 1.5	± 3.0	± 6.0
400 TO 500	± 1.8	± 3.5	± 7.0
500 OVER	± 0.4 %	± 0.8 %	± 1.5 %



注記

- 1) 適用電線サイズ: AVS 2 ~ AVS 3 トスル.
- 2) 仕上り外径:  $\phi 2.9 \sim 3.6$

NOTE

- 1) APPLICABLE WIRE SIZE: AVS 2 ~ AVS 3.
- 2) OUT LINE:  $\phi 2.9 \sim 3.6$

ISSUE MARK
------------

CUSTOMER										MATL. NBR (GRAY)			TREAT. & FIN.				
CUSTOMER PART NO.					CUSTOMER DWG NO.					SPEC.							
90.11.04 NEW C90-M190 M.H OFFICE										STDLIB NO.			NAME 312 SEALED CONNCTOR				
LET	DATE	REVISION RECORD	NO.	CHKD	VENDOR	VENDOR NO.					RUBBER STOPPER (M SIZE)						
GENERAL TOLERANCE										PART NO. 7157-3853-40					DWG NO. 7157-3853-40:R		TRIAL PART NO.
	10MAX	50MAX	100MAX	250MAX	250OVR	ANGLE	ECCENT	DWG TYPE	DWG SOURCE	DWG DATE	UNIT	SCL	ANGLE				
A	±0.15	±0.2	±0.3	±0.5	±0.75	±30'	0.1	R	NEW	90.11.04	mm	5/1	3				
B	±0.2	±0.3	±0.55	±0.95	±1.4	±30'	0.1	APPROVED	CHECKED	CHECKED	DESIGN	DRAWN					
C	±0.3	±0.5	±0.8	±1.4	±2	±30'	0.15	YAMAMOTO T. MAKITA									
SPECIFIED						WEIGHT		90.11.16		90.11.15	90.11.15	88.08.22	90.11.04	YAZAKI CORPORATION			