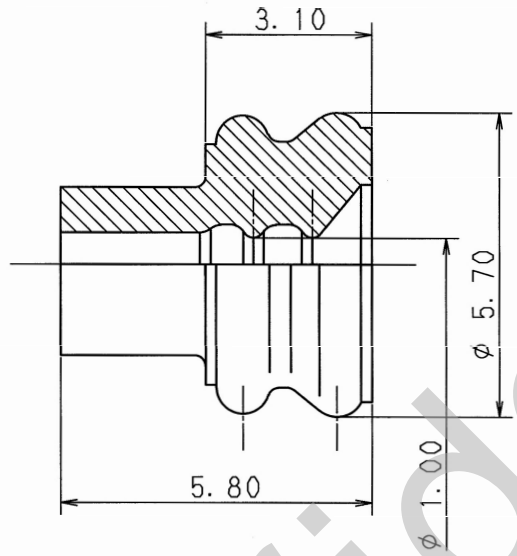
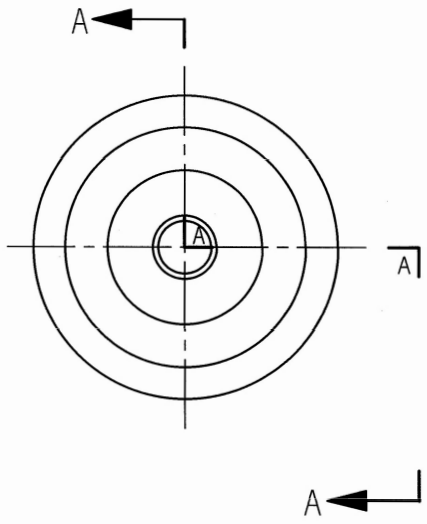


RUBBER PART GENERAL TOLERANCE			
PART DIM.	1	2	(3)
0 TO 3	± 0.2	± 0.3	± 0.4
3 TO 6	± 0.2	± 0.4	± 0.5
6 TO 10	± 0.3	± 0.5	± 0.6
10 TO 18	± 0.3	± 0.6	± 0.8
18 TO 30	± 0.4	± 0.8	± 1.0
30 TO 50	± 0.5	± 1.0	± 1.5
50 TO 80	± 0.6	± 1.2	± 2.0
80 TO 120	± 0.7	± 1.4	± 2.5
120 TO 180	± 0.8	± 1.6	± 3.0
180 TO 250	± 1.0	± 2.0	± 4.0
250 TO 315	± 1.2	± 2.5	± 5.0
315 TO 400	± 1.5	± 3.0	± 6.0
400 TO 500	± 1.8	± 3.5	± 7.0
500 OVER	± 0.4 %	± 0.8 %	± 1.5 %



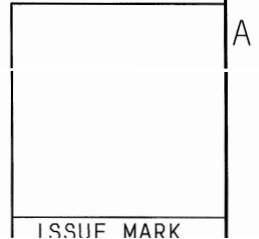
SEC. A-A

NOTES

- 1. APPLICABLE WIRE SIZE : DIAMETER OF FINISHED CABLE
φ1.30~φ1.90.
- 2. PART NUMBERS IN PARENTHESIS SHALL BE USED FOR AIR BAG (A/B) CIRCUITS AND OTHER CIRCUITS DESIGNATED FOR SPECIAL MONITORING.

注記

- 1. 適用電線サイズ : 仕上り外径φ1.30~φ1.90とする。
- 2. () 内品番は、エアバッグ (A/B) 回路及び特別管理回路に使用する時に適用すること。



△ 03.04.24	CHANGED COLOR & ADDED A/B PART NO.	C03-X302	Y. S	CUSTOMER		MATL. SILICONE RUBBER	TREAT. & FIN.
△ 97.05.21	CHANGED NOTE	C97-6989	T. S	CUSTOMER PART NO.		△ (GREEN)	
89.07.13	NEW	C89-L347	H. I	CUSTOMER DWG NO.		NAME △ 2.3II (090II) RUBBER STOPPER	
LET	DATE	REVISION RECORD NO.	CHKD	OFFICE		(USE FOR 5.30 DIA CAVITY)	
				TRIAL PART NO.			
GENERAL TOLERANCE			VENDOR		VENDOR NO.		
10MAX	50MAX	100MAX	250MAX	250QVR	ANGLE	ECCENT	DWG TYPE
A ±0.15	±0.2	±0.3	±0.5	±0.75	±30'	0.1	R
B ±0.2	±0.3	±0.55	±0.95	±1.4	±30'	0.1	APPROVED
C ±0.3	±0.5	±0.8	±1.4	±2	±30'	0.15	CHECKED
SPECIFIED			MASS		DESIGN		DRAWN
RUBBER PART GENERAL TOLERANCE 3			g		TSUJI		Y. OHKUBO
			03.04.25		88.10.06		03.04.24
						PART NO. 7157-3821 (7B57-3821) △	
						CH. CODE	
						DWG NO. 7157-3821:R	
						SET DWG NO.	
YAZAKI CORPORATION							