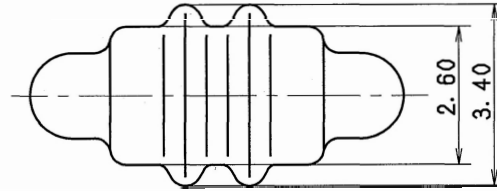


△ RUBBER PART GENERAL TOLERANCE			
PART DIM.	1	2	③
0 TO 3	± 0.2	± 0.3	± 0.4
3 TO 6	± 0.2	± 0.4	± 0.5
6 TO 10	± 0.3	± 0.5	± 0.6
10 TO 18	± 0.3	± 0.6	± 0.8
18 TO 30	± 0.4	± 0.8	± 1.0
30 TO 50	± 0.5	± 1.0	± 1.5
50 TO 80	± 0.6	± 1.2	± 2.0
80 TO 120	± 0.7	± 1.4	± 2.5
120 TO 180	± 0.8	± 1.6	± 3.0
180 TO 250	± 1.0	± 2.0	± 4.0
250 TO 315	± 1.2	± 2.5	± 5.0
315 TO 400	± 1.5	± 3.0	± 6.0
400 TO 500	± 1.8	± 3.5	± 7.0
500 OVER	± 0.4 %	± 0.8 %	± 1.5 %

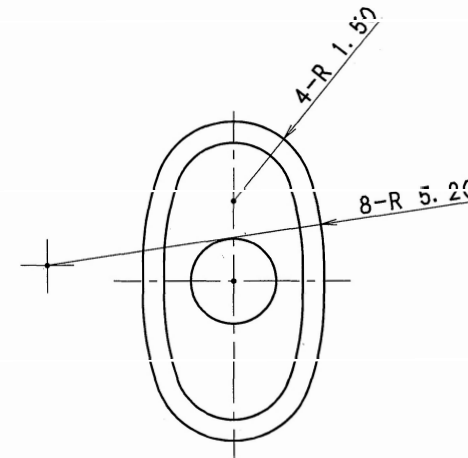
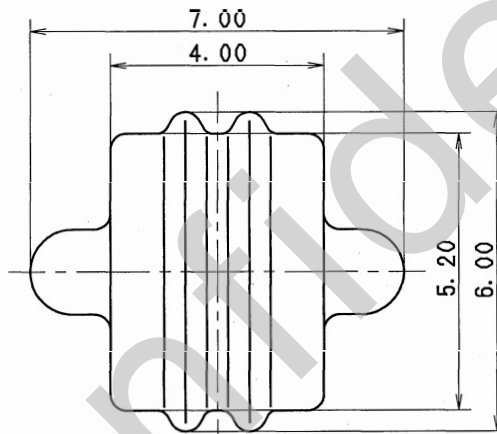


注記

1) 通用コネクタ品番: 7222-7735, 7222-7736-90,
7123-7735, 7123-7736-90

△ NOTE

1) APPLICABLE CONNECTOR PART NO. :
7222-7735, 7222-7736-90,
7123-7735, 7123-7736-90



ISSUE MARK

				CUSTOMER				MATL. △ NBR (BROWN)				TREAT. & FIN.		
				CUSTOMER PART NO.				CUSTOMER DWG NO.						
△	11. 12. 23	ADDED GENERAL TOLERANCE ETC.		C12-Z036	R. M					NAME △ YV TYPE DUMMY PLUG 1P				
	87. 06. 02	新設		7MC-0258	児玉					TRIAL PART NO.				
LET	DATE	REVISION RECORD		NO.	CHKD	VENDOR								
GENERAL TOLERANCE						VENDOR NO.								
	10MAX	50MAX	100MAX	250MAX	250OVR	ANGLE	ECCENT	DWG TYPE	DWG SOURCE	DWG DATE	UNIT	SCL	ANGLE	PART NO.
A	±0.15	±0.2	±0.3	±0.5	±0.75	±30'	0.1	R	NEW	87.06.02	mm	10:1	3	7157-3797-80
B	±0.2	±0.3	±0.55	±0.95	±1.4	±30'	0.1	APPROVED	CHECKED	CHECKED	DESIGN	DRAWN		DWG NO.
C	±0.3	±0.5	±0.8	±1.4	±2	±30'	0.15	M. KASHIYAMA		K. URANO	K. OHTAKA	R. MAJERANO		7157-3797-80:R
SPECIFIED						MASS		11. 12. 23				11. 12. 23		SET DWG NO.
								11. 12. 23				11. 12. 23		YAZAKI CORPORATION

1

2

3