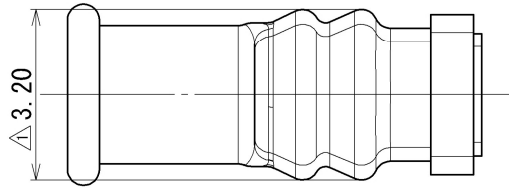
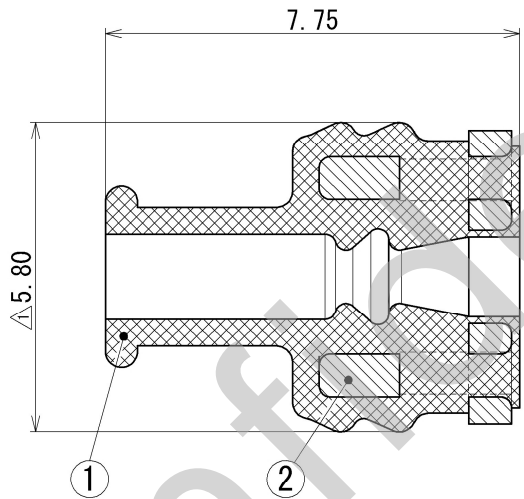
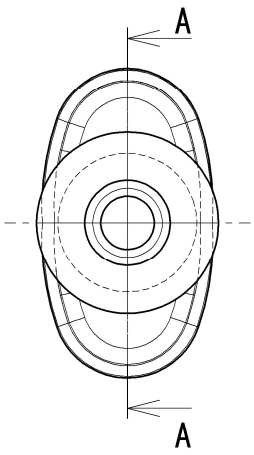


| RUBBER PART GENERAL TOLERANCE | | | | | |
|-------------------------------|--|--------|--------|--------|--|
| PART DIM. | | 1 | 2 | ③ | |
| 0 TO 3 | | ±0.2 | ±0.3 | ±0.4 | |
| 3 TO 6 | | ±0.2 | ±0.4 | ±0.5 | |
| 6 TO 10 | | ±0.3 | ±0.5 | ±0.6 | |
| 10 TO 18 | | ±0.3 | ±0.6 | ±0.8 | |
| 18 TO 30 | | ±0.4 | ±0.8 | ±1.0 | |
| 30 TO 50 | | ±0.5 | ±1.0 | ±1.5 | |
| 50 TO 80 | | ±0.6 | ±1.2 | ±2.0 | |
| 80 TO 120 | | ±0.7 | ±1.4 | ±2.5 | |
| 120 TO 180 | | ±0.8 | ±1.6 | ±3.0 | |
| 180 TO 250 | | ±1.0 | ±2.0 | ±4.0 | |
| 250 TO 315 | | ±1.2 | ±2.5 | ±5.0 | |
| 315 TO 400 | | ±1.5 | ±3.0 | ±6.0 | |
| 400 TO 500 | | ±1.8 | ±3.5 | ±7.0 | |
| 500 OVER | | ±0.4 % | ±0.8 % | ±1.5 % | |

| YAZAKI PART NO. AND CH. CODE | NO. | PART NO. | PART NAME | MATERIAL | COLOR |
|------------------------------|-----|--------------|--------------|----------|-------|
| 7157-3795-80 | ① | | SEAL RUBBER | NBR | BROWN |
| | ② | 7157-7819-80 | REAR STOPPER | PET-G | BROWN |



- 注記**
- ④③① 1. 適用電線サイズ : CAVS 0.5
IVSSH 0.35f~0.5f
 - 2. 適用端子品番 : 7114-1456, 7116-1456
 - 3. 適用コネクタ品番 : 7222-7735, 7222-7736-90,
7123-7735, 7123-7736-90



NOTES

- ④③① 1. APPLICABLE WIRE SIZE : CAVS 0.5
IVSSH 0.35f~0.5f
- 2. APPLICABLE TERMINAL PART NO. : 7114-1456, 7116-1456
- 3. APPLICABLE CONNECTOR PART NO. : 7222-7735, 7222-7736-90,
7123-7735, 7123-7736-90

③ SEC. A-A

| | | | | | | | | | | | | | | | |
|-------------------|------------|--|----------|--------|--|--|-------------------------------|------------|------------|------------|----------|----------|------------------------------------|----------|--------------|
| ④ | 2018/08/10 | ADDED APPLICABLE WIRE SIZE, ETC. | C18-P256 | Y. M | CUSTOMER CUSTOMER PART NO. CUSTOMER DWG NO. OFFICE TRIAL PART NO. or PRODUCT NO. VENDOR VENDOR NO. | MATL. SPEC. SEE TABLE TREAT. & FIN. | NAME ④ YV-TYPE SEAL RUBBER 1P | | | | | | | | |
| ③ | 2008/11/25 | CHANGED VIEW, ETC. | C08-Z779 | K. N | | | | | | | | | | | |
| ② | 2001/03/19 | ELIMINATE DIMENSION | C01-X330 | M. N | | | | | | | | | | | |
| ① | 1994/02/03 | CORRECTED DIMENSION ADDED NOTES & TABLE | C94-L139 | M. K | | | | | | | | | | | |
| | 1987/06/02 | NEW | 7MC-0258 | 児玉 | | | | | | | | | | | |
| LET | DATE | REVISION RECORD | NO. | CHKD | | | | | | | | | | | |
| GENERAL TOLERANCE | | | | | DWG TYPE | DWG SOURCE | DWG DATE | UNIT | SCL | ANGLE | PART NO. | | | | |
| | 10MAX | 50MAX | 100MAX | 250MAX | 2500VR | ANGLE | ECCENT | R | NEW | 1987/06/02 | mm | 10:1 | 3 | CH. CODE | 7157-3795-80 |
| A | ±0.15 | ±0.2 | ±0.3 | ±0.5 | ±0.75 | ±0.5° | 0.1 | APPROVED | CHECKED | CHECKED | DESIGN | DRAWN | DWG NO. 7157-3795-80:R SET DWG NO. | | |
| B | ±0.2 | ±0.3 | ±0.55 | ±0.95 | ±1.4 | ±1.0° | 0.1 | N. TAGUCHI | K. FUKUDA | | OHTAKA | Y. MAEDA | | | |
| C | ±0.3 | ±0.5 | ±0.8 | ±1.4 | ±2 | ±1.5° | 0.15 | | | | | | YAZAKI Corporation | | |
| SPECIFIED | | | | | MASS | | | | | | | | A3 | | |
| | | | | | ④ (0.1) g | 2018/08/10 | 2018/08/10 | | 1987/02/12 | 2018/08/10 | | | | | |