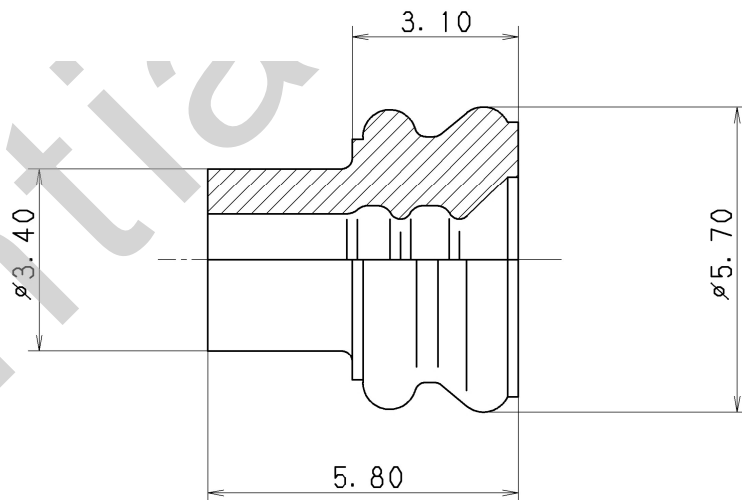
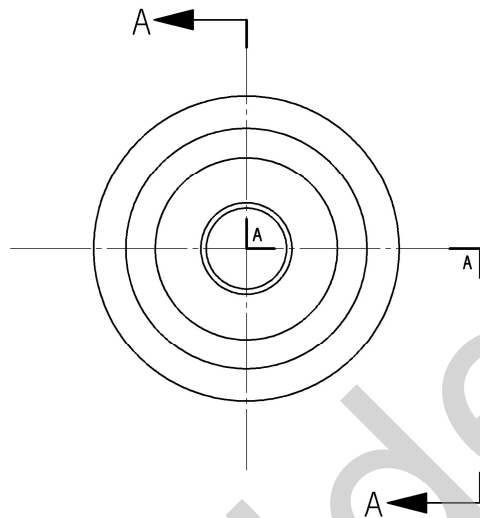


RUBBER PART GENERAL TOLERANCE			
PART DIM.	1	(2)	3
0 TO 3	± 0.2	± 0.3	± 0.4
3 TO 6	± 0.2	± 0.4	± 0.5
6 TO 10	± 0.3	± 0.5	± 0.6
10 TO 18	± 0.3	± 0.6	± 0.8
18 TO 30	± 0.4	± 0.8	± 1.0
30 TO 50	± 0.5	± 1.0	± 1.5
50 TO 80	± 0.6	± 1.2	± 2.0
80 TO 120	± 0.7	± 1.4	± 2.5
120 TO 180	± 0.8	± 1.6	± 3.0
180 TO 250	± 1.0	± 2.0	± 4.0
250 TO 315	± 1.2	± 2.5	± 5.0
315 TO 400	± 1.5	± 3.0	± 6.0
400 TO 500	± 1.8	± 3.5	± 7.0
500 OVER	± 0.4 %	± 0.8 %	± 1.5 %



注記

1) 色 : 黒

△ 2) 材料 : NBR

3) 適用電線サイズAVS0.5~AEX1.25相当とする。

NOTES

1) COLOR : BLACK

△ 2) MATL&SPEC : NBR

3) APPLICABLE WIRE SIZE EQUIVALENT TO AVS 0.5~AEX 1.25.

ISSUE MARK

					CUSTOMER					MATL. SPEC. SEE NOTES		TREAT. & FIN.		
					CUSTOMER PART NO.					CUSTOMER DWG NO.				
△	09.09.02	CHANGED NOTES, ETC.	C09-Z612	C. T						NAME 090, RUBBER STOPPER				
	85.04.15	NEW	C85-5364	M. T	OFFICE					TRIAL PART NO.				
LET	DATE	REVISION RECORD	NO.	CHKD	VENDOR					(USE FOR 5.30 DIA CAVITY)				
GENERAL TOLERANCE					VENDOR NO.					PART NO. 7157-3648				
	10MAX	50MAX	100MAX	250MAX	250OVR	ANGLE	ECCENT	DWG TYPE	DWG SOURCE	DWG DATE	UNIT	SCL	ANGLE	CH. CODE
A	±0.15	±0.2	±0.3	±0.5	±0.75	±30'	0.1	R	NEW	85.04.15	mm	10/1	3	DWG NO. 7157-3648
B	±0.2	±0.3	±0.55	±0.95	±1.4	±30'	0.1	APPROVED	CHECKED	CHECKED	DESIGN	DRAWN		SET DWG NO.
C	±0.3	±0.5	±0.8	±1.4	±2	±30'	0.15	M. YAMANASHI	S. SUZUKI	C. TORII	TSUJI	C. SANJOAQUIN		DWG NO. 7157-3648:R
SPECIFIED RUBBER PART GENERAL TOLERANCE 2					MASS					YAZAKI CORPORATION				
					09.09.02					09.09.02				
					09.09.02					85.01.11				
					09.09.02					09.09.02				

1

2

3

1

2

3