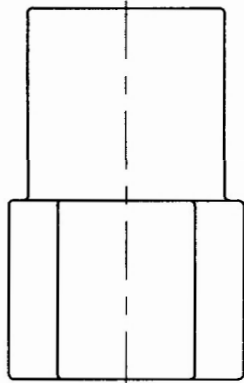


PART NO. AND CH. CODE	COLOR	MATING PART NO.
7122-6347	NATURAL	7123-6347
7122-6347-40	GRAY	7123-6347-40

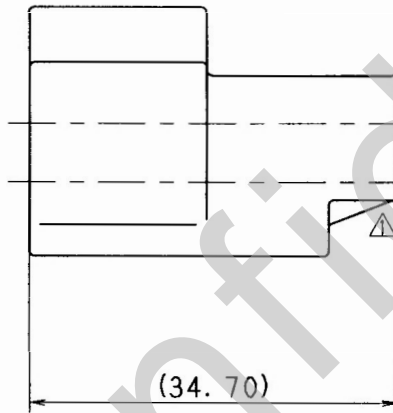
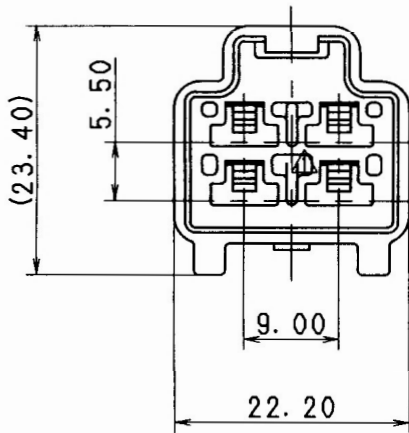


注記

- 1. 嵌合相手品番: 7123-6347, -6347-40.
- 2. 適用端子品番: 7114-2882-02, -2883-02, -2872-02

NOTES

- 1. MATING PART NO. : 7123-6347, -6347-40.
- 2. APPLICABLE TERMINAL NO. : 7114-2882-02, -2883-02, -2872-02.



ISSUE MARK

		CUSTOMER				MATERIAL SPEC.				TREAT. & FIN.					
		CUSTOMER PART NO.				CUSTOMER DWG NO.				PBT					
△	99.11.11	CHANGED FORM ETC.		C99-M693	H. Y					NAME △ M-LC TYPE CONNECTOR HOUSING					
	99.07.22	NEW		C99-M098	H. Y	TRIAL PART NO.				MALE 4P (W. GY)					
LET	DATE	REVISION RECORD		NO.	CHKD	VENDOR									
GENERAL TOLERANCE						VENDOR NO.									
	10MAX	50MAX	100MAX	250MAX	2500OVR	ANGLE	ECCENT	DWG TYPE	DWG SOURCE	DWG DATE	UNIT	SCL	ANGLE	PART NO.	
A	±0.15	±0.2	±0.3	±0.5	±0.75	±30'	0.1	R	NEW	99.07.22	mm	2/1	3	7122-6347 ETC.	
B	±0.2	±0.3	±0.55	±0.95	±1.4	±30'	0.1	APPROVED	CHECKED	CHECKED	DESIGN	DRAWN		DWG NO. 7122-6347:R	
©	±0.3	±0.5	±0.8	±1.4	±2	±30'	0.15	YOSHIDA		TAKAHASHI				SET DWG NO.	
SPECIFIED						MASS						YAZAKI CORPORATION			
						g						99.11.24 99.11.24 99.11.24 99.11.24 99.06.16 99.11.11			