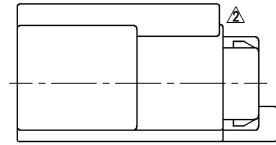


△	YAZAKI PART NO.	COLOR
	7122-6030	NATURAL
	7122-6030-40	GRAY

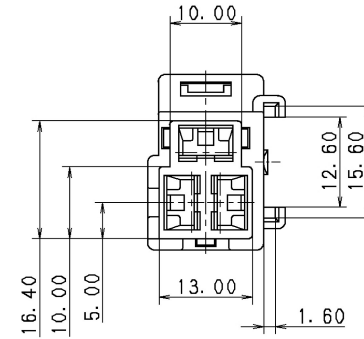
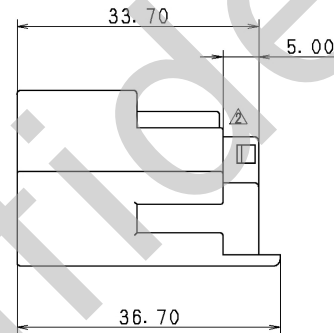
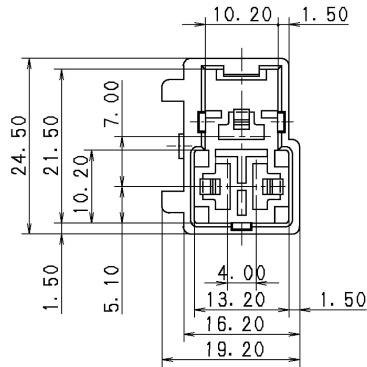


注記

1. 通用オスタ-ミナル品番 : 7114-2870 ETC. △
2. 通用リヤホルダ品番 : 7157-6230-30
3. かんめメスハウジング品番 : 7123-6030

△ NOTES

1. APPLICABLE MALE TERMINAL NO. : 7114-2870 ETC.
2. APPLICABLE REAR HOLDER NO. : 7157-6230-30
3. MATING FEMALE HOUSING NO. : 7123-6030



ISSUE MARK
------------

△	11.01.14	CHANGED PART NAME	C11-ZA30	C.S
△	90.02.19	RENEW AND CORRECTED AN ERROR IN WRITING	C89-M285	H.Y
LET	DATE	REVISION RECORD	NO.	CHKD

GENERAL TOLERANCE				ANGLE	ECCENT		
A	±0.15	±0.2	±0.3	±0.5	±0.75	±30'	0.1
B	±0.2	±0.3	±0.55	±0.95	±1.4	±30'	0.1
◎	±0.3	±0.5	±0.8	±1.4	±2	±30'	0.15
SPECIFIED							WEIGHT

CUSTOMER △		MATERIAL		TREAT.	
CUSTOMER PART NO.		SPEC. NYLON 6		& FIN.	
OFFICE △		NAME △M TYPE HOUSING			
VENDOR		STDLIB NO.			
VENDOR NO.		3PM (W)			
DWG TYPE		PART NO.		7122-6030 ETC.	
DWG SOURCE		DWG NO.		△ 7122-6030 : R TRIAL PART NO.	
APPROVED		DESIGN		DRAWN	
S. MIZUSE		R. DE GUZMAN		SAKAI C. SANJOAQUIN	
DATE		DATE		DATE	
11.01.14		11.01.14		83.09.15 11.01.14	
YAZAKI CORPORATION					