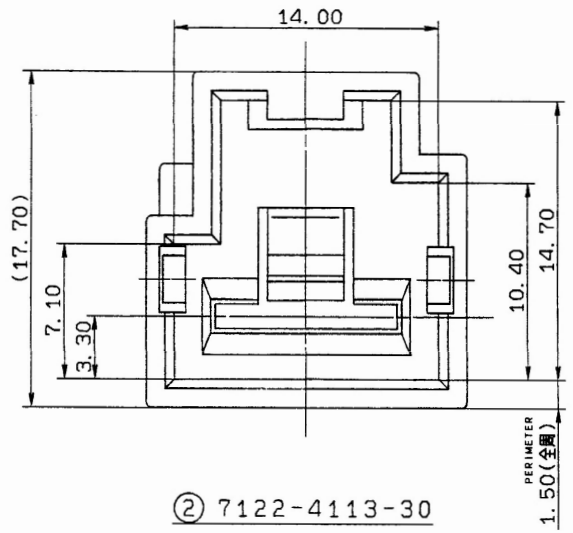
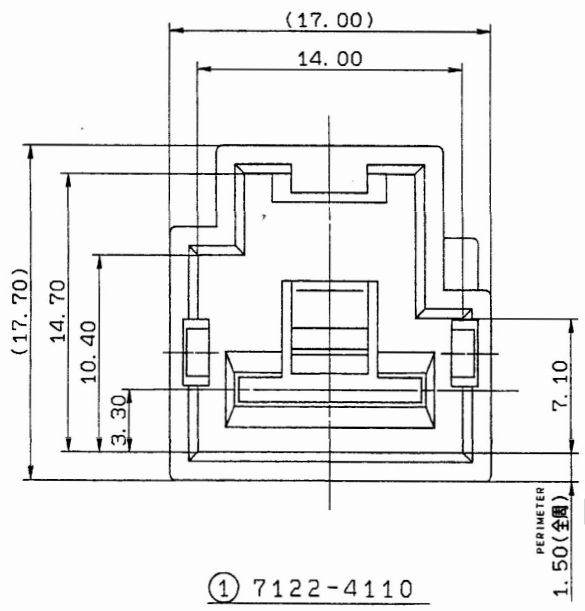
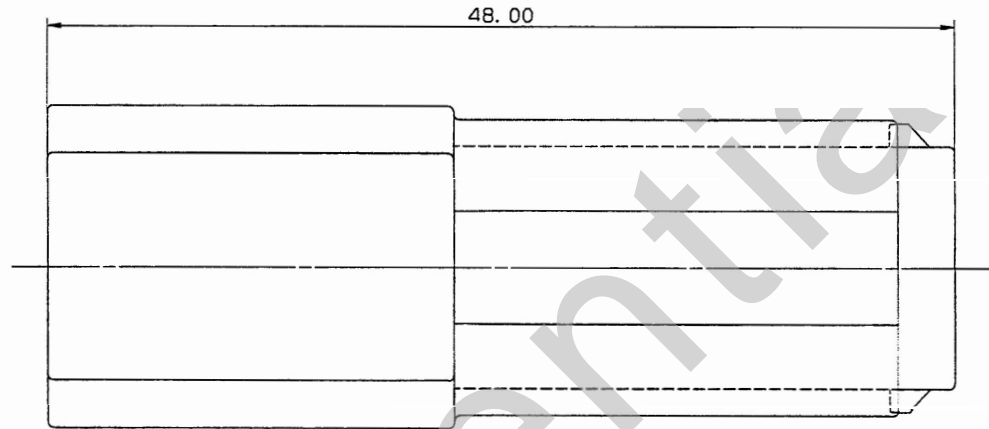


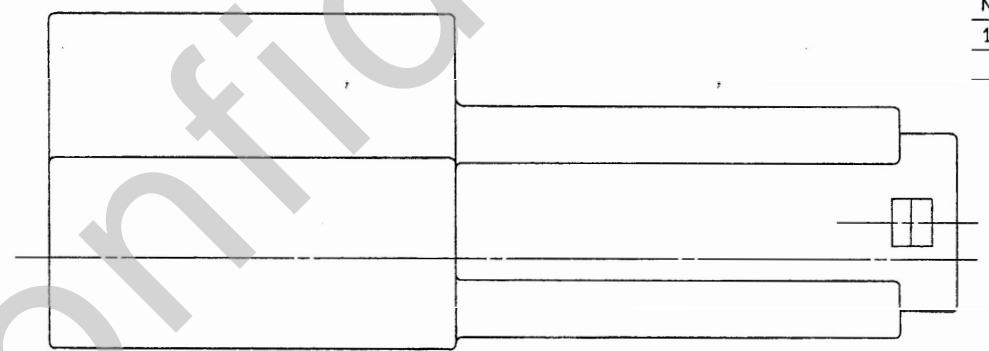
NO.	YAZAKI PART NO. 矢崎品番	MARK 符号	MATERIAL (COLOR) 材質 (色)	APPLICABLE REAR HOLDER NO. 適用リアホルダー品番	MATING PART NO. 嵌合相手品番
①	7122-4110	L01MW	NYLON (NATURAL)	7157-6410-70	7123-4110
②	7122-4113-30	L01MB	NYLON (BLACK)	7157-6410-40	7123-4113-30



② 7122-4113-30



① 7122-4110



注記

1. 適用端子品番: 7114-3250, 7114-3251

NOTES

1. APPLICABLE TERMINAL NO.
: 7114-3250, 7114-3251

LET	DATE	REVISION RECORD	NO.	CHKD
88.09.05	N E W	8MC-3139	T.M	

GENERAL TOLERANCE						
	10MAX	50MAX	100MAX	250MAX	250OVR	ANGLE
A	±0.15	±0.2	±0.3	±0.5	±0.75	±30'
B	±0.2	±0.3	±0.55	±0.95	±1.4	±30'
C	±0.3	±0.5	±0.8	±1.4	±2	±30'
SPECIFIED						ECCENT
						0.1
						0.15
						WEIGHT
						g

CUSTOMER		MATERIAL SPEC.		TREAT. & FIN.	
CUSTOMER PART NO.		SEE TABLE			
CUSTOMER DWG NO.		NAME		L TYPE CONNECTOR	
OFFICE		STDLIB NO.		HOUSING 1PM	
VENDOR		VENDOR NO.		PART NO. 7122-4110 ETC.	
APPROVED		CHECKED		DESIGN	
DRAWN		DWG NO. 7122-4110:R		TRIAL PART NO.	
加藤 新島		KUSUNOKI S. YAGI		YAZAKI CORPORATION	
88.09.07		88.09.06		88.01.08 88.08.31	