

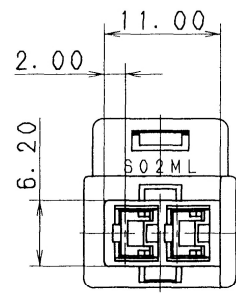
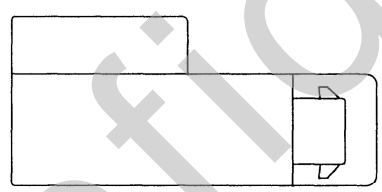
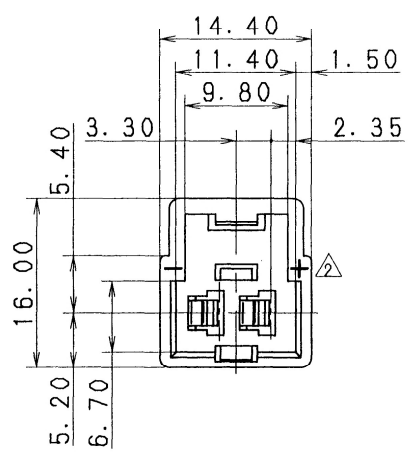
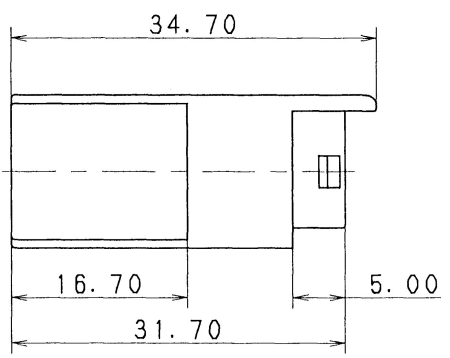
NO.	YAZAKI PART NO.	COLOR
1	7122-1629-90	BLUE
2	7122-1629-30	BLACK

注記

1. 適用端子品番: 7114-1230 ETC.
2. 嵌合相手品番: 7123-1629-90 ETC.
3. 適用リヤホルダ品番: 7157-6022-90 ETC.

△ NOTES

1. APPLICABLE TERMINAL NO. : 7114-1230 ETC.
2. MATING PART NO. : 7123-1629-90 ETC.
3. APPLICABLE REAR HOLDER NO. : 7157-6022-90 ETC.



ISSUE MARK

△ 96.09.30		ADDED PART NO.	C96-M819	H. K	CUSTOMER		MTRL. SPEC.		NYLON 6		TREAT. & FIN.			
△ 90.04.18		ADDED STAMPING	C90-6352	H. Y	CUSTOMER PART NO.		CUSTOMER DWG NO.							
△ 90.02.09		RENEW	C90-L047	M. K	OFFICE		TRIAL PART NO.		NAME △ S TYPE CONNECTOR					
LET	DATE	REVISION RECORD	NO.	CHKD	VENDOR				HOUSING 2PM (L)					
GENERAL TOLERANCE				VENDOR NO.		DWG TYPE		DWG SOURCE		DWG DATE		UNIT		
A	±0.15	±0.2	±0.3	±0.5	±0.75	±30'	0.1	R	RENEW	83.03.04	mm	SCL	ANGLE	
B	±0.2	±0.3	±0.55	±0.95	±1.4	±30'	0.1	APPROVED	CHECKED	CHECKED	DESIGN	DRAWN	PART NO. CH. CODE	
③	±0.3	±0.5	±0.8	±1.4	±2	±30'	0.15	神田		渡辺	INABA	MOTOHASHI	△ 7122-1629-90 ETC.	
SPECIFIED				MASS		g		96.10.4		96.10.3		83.03.03 96.09.30		DWG NO.
											△ 7122-1629-90:R		YAZAKI CORPORATION	