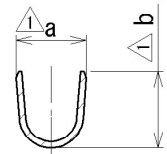
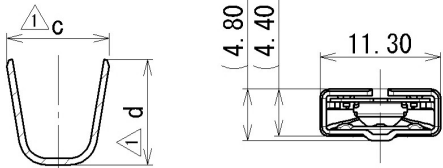


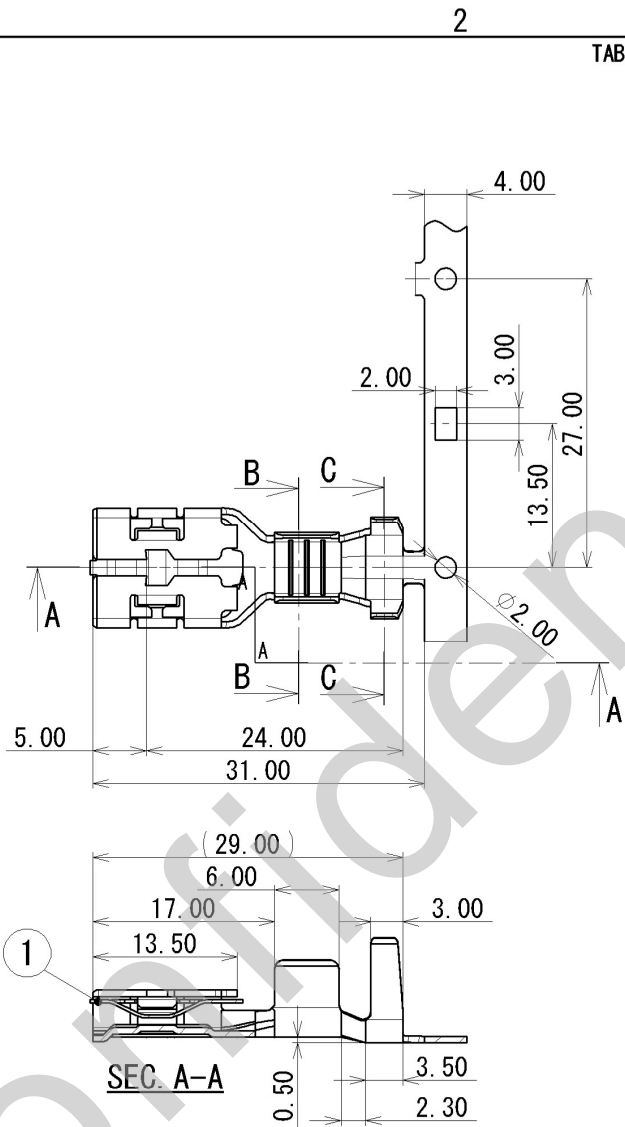
③ 7116-5153-02



SEC. B-B



SEC. C-C



SEC. A-A

TABLE 1

PART NO. AND CH. CODE	NO.	△ PART NAME	MATERIAL
△ 7116-5073-02 ETC.		TERMINAL	COPPER ALLOY (t=0.60) TIN PLATING
7157-7270	①	SPRING	STAINLESS STEEL (t=0.30)

△ TABLE 2

PART NO. AND CH. CODE	a	b	c	d	△ APPLICABLE WIRE
7116-5073-02	6.60	(7.20)	9.60	(9.80)	AV 5~8sq AVX 5~8sq AVS 5sq
7116-5152-02	5.00	(5.60)	7.20	(8.50)	AV 3sq AVX 3sq AVS 3sq
7116-5153-02	8.10	(8.90)	11.40	(11.10)	AV 10sq

注記

- △ 1. かん合オスタミル : 7114-5073-02 ETC.
- △ 2. 適用電線種・サイズは、TABLE 2に記載の有る物のみとする。

NOTES

- △ 1. MATING MALE TERMINAL : 7114-5073-02 ETC.
- △ 2. ONLY WIRE TYPES AND SIZES SPECIFIED IN TABLE 2 SHALL BE APPLIED.

③	13/02/18	ADDED PART NO. ETC.	C13-Z093	J. B	CUSTOMER
②	06/11/06	ADDED NOTE, ETC.	C06-P929	S. M	CUSTOMER PART NO.
①	06/10/11	ADDED PART NO., ETC.	C06-ZB03	S. M	CUSTOMER DWG NO.
	05/12/05	NEW	C05-ZF74	T. T	OFFICE
LET	DATE	REVISION RECORD	NO.	CHKD	VENDOR
GENERAL TOLERANCE					VENDOR NO.

	10MAX	50MAX	100MAX	250MAX	2500VR	ANGLE	ECCENT	DWG TYPE	DWG SOURCE	DWG DATE	UNIT	SCL	ANGLE
A	±0.15	±0.2	±0.3	±0.5	±0.75	±30'	O. 1	R	NEW	05/12/05	mm	2:1	3
B	±0.2	±0.3	±0.55	±0.95	±1.4	±30'	O. 1	APPROVED	CHECKED	CHECKED	DESIGN	DRAWN	
③	±0.3	±0.5	±0.8	±1.4	±2	±30'	O. 15	H. KANDA	K. SAWAIRI		M. SUZUKI	J. BUTALON	
SPECIFIED							MASS			g			

MATL. SPEC.	SEE TABLE 1	TREAT. & FIN.	SEE TABLE 1
NAME	△ 375 TYPE FEMALE TERMINAL		
PART NO. CH. CODE	△ 7116-5073-02 ETC.		
DWG NO.	7116-5073-02:R	SET DWG NO.	
YAZAKI CORPORATION			