

PART NO. AND CH. CODE	W <sub>1</sub>	W <sub>2</sub>	H <sub>1</sub>	H <sub>2</sub>	R <sub>1</sub>	R <sub>2</sub>	△(REFERENCE) WIRE SIZE (mm <sup>2</sup> )
7116-4100-08, 回	2.30	2.80	(2.30)	(3.50)	0.45	0.45	△0.3~0.5 EQUIVALENT
7116-4101-08, 回	3.00	3.40	△(2.95)	(4.10)	0.65	0.65	△0.6~1.25 EQUIVALENT

△GENERAL TOLERANCE											
	10MAX	50MAX	100MAX	250MAX	250OVR	R5MAX	R10MAX	R20MAX	R20OVR	ANGLE	ECCENT
A	±0.15	±0.2	±0.3	±0.5	±0.75					±3°	0.1
B	±0.2	±0.3	±0.55	±0.95	±1.4	±0.2	±0.3	±0.5	±2.5	±3°	0.1
(C)	±0.3	±0.5	±0.8	±1.4	±2					±3°	0.15

注記

1. 嵌合雄ターミナル品番 : 7114-4100-08 ETC.

△2. 材質 : 銅合金 t=0.25 (金めっき, スズめっき)

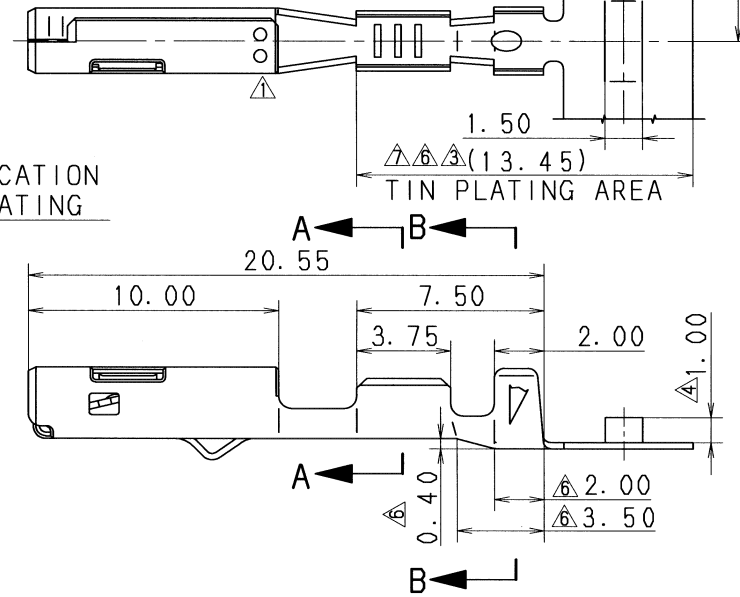
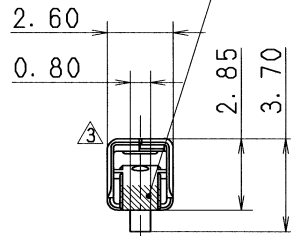
NOTES

1. MATING TERMINAL NO. : 7114-4100-08 ETC.

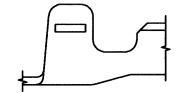
△2. MATERIAL : COPPER ALLOY. t=0.25

(GOLD PLATING, TIN PLATING)

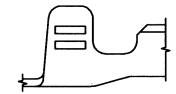
IDENTIFICATION GOLD PLATING



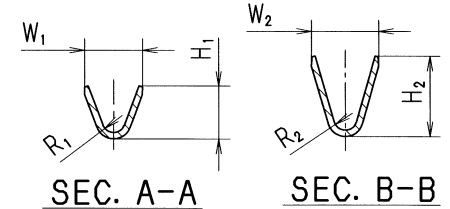
APPLICABLE WIRE SIZE MARK



(7116-4100-08)



(7116-4101-08)



△	08/07/04	CHANGED DIMENSION	C08-Z468	T. Y
△	05/10/18	DELETED SOLDER PLATING INSTRUCTION, ETC.	C05-ZD51	Y. W
△	04/04/19	CHANGED WIRE SIZE	C04-X190	K. O
△	03/12/23	CORRECT MISENTRY	C04-P010	M. H
△	03/09/19	CHANGED FORM, NOTE & WIRE SIZE, 回	C03-X584	H. T
△	99/06/25	CORRECT ALL ERRORS, △	C99-L932	H. O
△	98/12/22	CHANGED DIMENSION & ADDED STAMP TO DISCRIMINATE THE GOLD PLATING	C98-M597	N. S
△	95/09/06	NEW	C98-M061	Y. W
LET	DATE	REVISION RECORD	NO.	CHKD

GENERAL TOLERANCE							
	10MAX	50MAX	100MAX	250MAX	250OVR	ANGLE	ECCENT
A	±0.15	±0.2	±0.3	±0.5	±0.75	±30'	0.1
B	±0.2	±0.3	±0.55	±0.95	±1.4	±30'	0.1
C	±0.3	±0.5	±0.8	±1.4	±2	±30'	0.15
SPECIFIED							MASS
							g

CUSTOMER				MATT. SPEC. SEE NOTES			TREAT. & FIN.	
CUSTOMER PART NO.		CUSTOMER DWG NO.		NAME 1.5 SYSTEM CONNECTOR FEMALE		TERMINAL (GOLD PLATING)		
OFFICE		TRIAL PART NO.		PART NO. 7116-4100-08 ETC.		CH. CODE		
VENDOR		VENDOR NO.		DWG NO. 7116-4100-08:R		SET DWG NO.		
DWG TYPE	DWG SOURCE	DWG DATE	UNIT	SCL	ANGLE	PART NO. 7116-4100-08 ETC.		
R	NEW	95/09/06	mm	5:1	3	CH. CODE		
APPROVED	CHECKED	CHECKED	DESIGN	DRAWN		DWG NO. 7116-4100-08:R		
杉山(調)		山本	K. OHTAKA	J. GALLARES		SET DWG NO.		
28.07.07		08.07.04	95/05/29	08/07/04		YAZAKI CORPORATION		

1

2

3