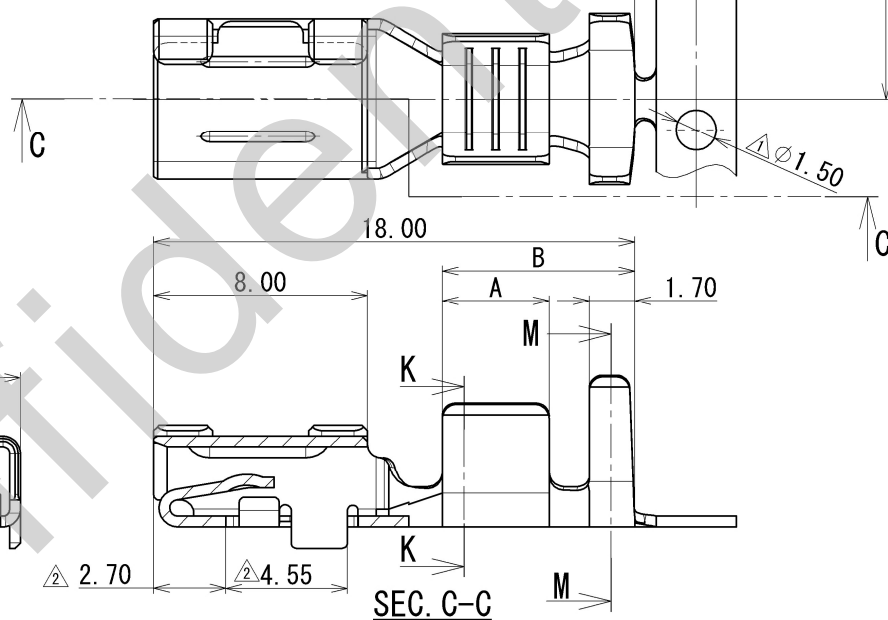
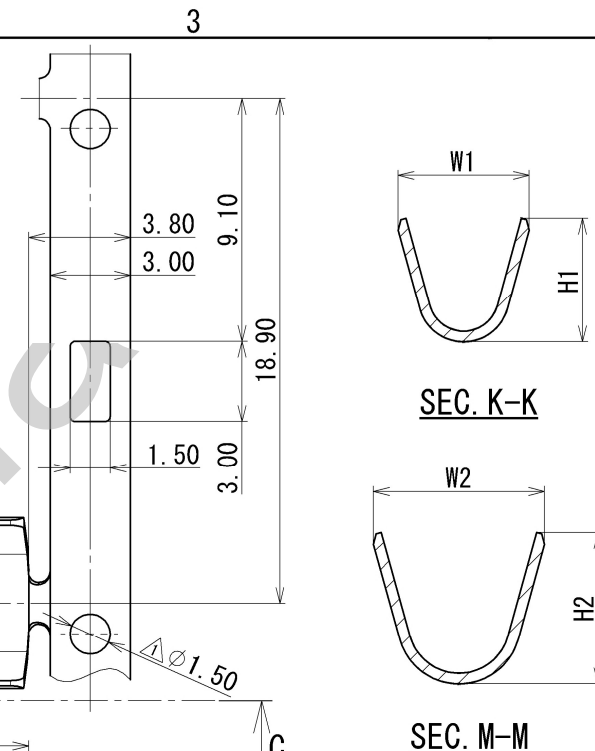


PART NO. AND CH. CODE	△ W1 ±0.4	△ W2 ±0.4	H1	H2	A	B	WIRE SIZE	△ MATERIAL
△ 7116-4030 (7B16-4030)	2.90	3.90	△ (2.62)	△ (3.43)	3.00	6.20	AVS/CAVS 0.3~0.5 CHFUS 0.35~0.5, HFSS 0.5	BRASS(t=0.40)
△ 7116-4031 (7B16-4031)	3.60	4.70	△ (3.34)	△ (4.20)	4.00	7.20	AVS 0.5~1.25, AVSS 0.75~1.25 CAVS 0.85~1.25, CHFUS/HFSS 0.75~1.5	BRASS(t=0.40)
7116-4032	4.90	6.40	△ (4.63)	△ (5.66)	4.00	7.20	AVS 2~3 HFSS 2, HF 3	BRASS(t=0.40)
△ 7196-1064-02	4.90	6.40	(4.63)	(5.66)	4.00	7.20	AVS 2~3 IVSSH 3	COPPER ALLOY(t=0.40)



注記

1. かん合相手品番：7114-4030 ETC.

△ 2. ()内品番は、エアバック回路及び特別管理回路に使用する時に適用すること。

NOTES

1. MATING PART NO. :7114-4030 ETC.

△ 2. ()PART NO. IS USED FOR PARTS ASSOCIATED WITH A/B CIRCUITS OR OTHER SPECIFIED CIRCUIT.

△ 2016/11/28	ADDED PART NO.	C16-P295	M. S
△ 2007/02/19	CORRECTION OF CLERICAL ERROR	C07-Z148	H. I
△ 2006/12/19	CHANGED WIRE SIZE, ETC.	C06-ZD41	H. I
△ 1998/07/18	CHANGED DIMENSION & NOTE	C97-N460	H. K
△ 1997/01/20	CHANGED FORM & ADDED A/B PART NO.	C97-L057	H. K
1988/12/24	NEW	C89-L002	K. J
LET	DATE	REVISION RECORD NO.	CHKD
GENERAL TOLERANCE			
	10MAX	50MAX	100MAX
	250MAX	2500VR	ANGLE
	ECCENT	DWG TYPE	DWG SOURCE
	DWG DATE	UNIT	SCL
	ANGLE	PART NO.	CH. CODE
A	±0.15	±0.2	±0.3
B	±0.2	±0.3	±0.55
③	±0.3	±0.5	±0.8
SPECIFIED			
MASS			
	DWG DATE	DESIGN	DRAWN
	1988/11/14	mm	5:1
	3	PART NO. △ 7116-4030 ETC. (7B16-4030 ETC.)	
	APPROVED		CH. CODE
	S. SUZUKI		△ 7116-4030:R
	M. NAGANO		SET DWG NO.
	Y. IKEDA		
	1987/03/04		
	2016/11/28		
	2016/11/28		
	2016/11/28		

CUSTOMER		MATL. SPEC. △ SEE TABLE	TREAT. & FIN. △ TIN PLATING
CUSTOMER PART NO.		NAME △ 4.8 TERMINAL FEMALE	
OFFICE		DWG NO. 7116-4030:R	
TRIAL PART NO.		SET DWG NO.	
VENDOR		YAZAKI CORPORATION	
VENDOR NO.			
DWG TYPE R			
DWG SOURCE NEW			
DWG DATE 1988/11/14			
UNIT mm			
SCL 5:1			
ANGLE 3			
APPROVED			
S. SUZUKI			
M. NAGANO			
Y. IKEDA			
1987/03/04			
2016/11/28			
2016/11/28			
2016/11/28			