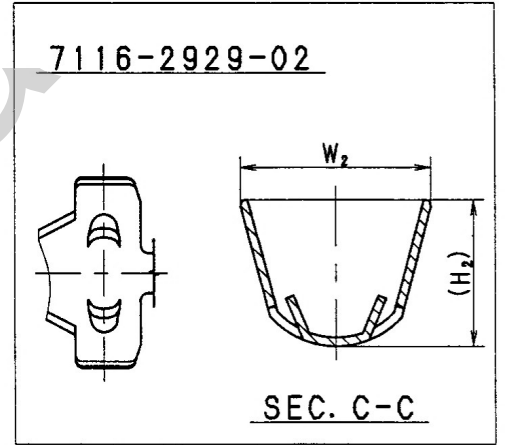
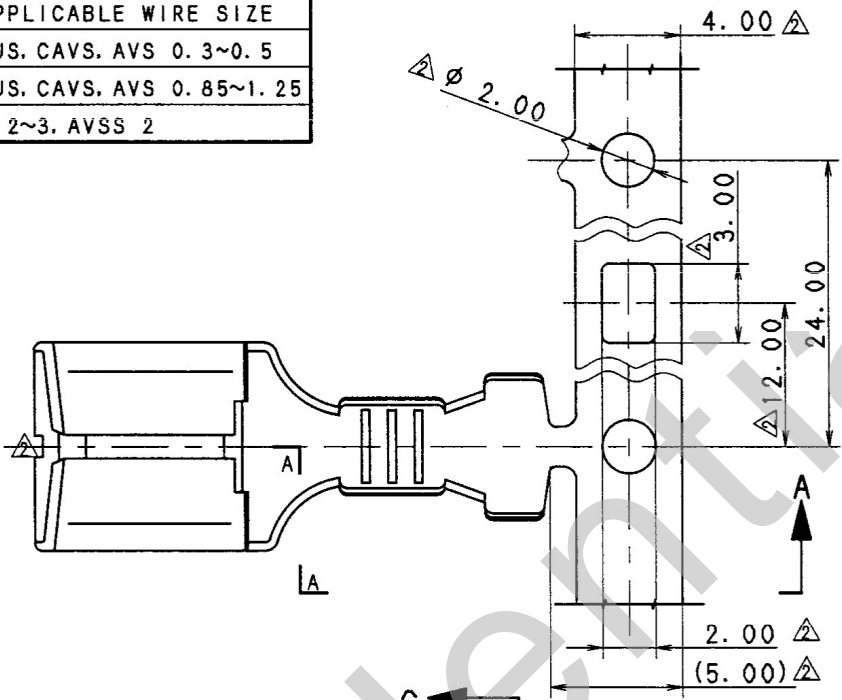
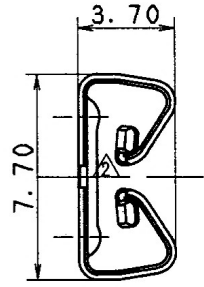
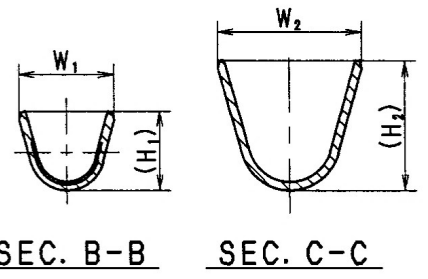
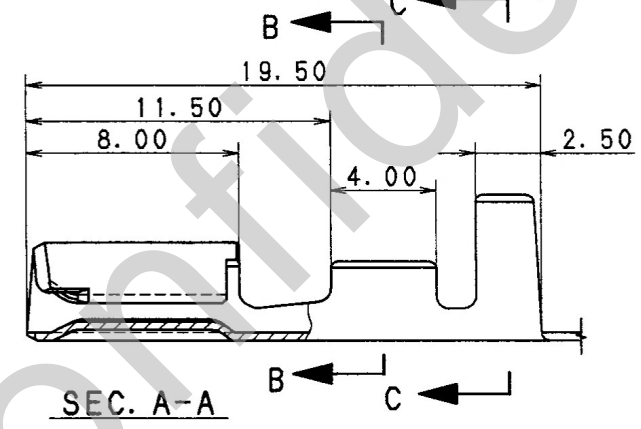


YAZAKI PART NO.	W ₁	H ₁	W ₂	H ₂	APPLICABLE WIRE SIZE
7116-2927-02	2.3	(2.6)	3.7	(2.9)	CAVUS, CAVS, AVS 0.3~0.5
7116-2928-02	3.1	(3.1)	5.5	(4.9)	CAVUS, CAVS, AVS 0.85~1.25
7116-2929-02	△4.3	△(4.4)	6.5	(6.4)	AVS 2~3, AVSS 2



注記
 1. 嵌合相手品番: 7114-2882-02
 : 7114-2883-02
 : 7114-2872-02

NOTE
 1. MATING TERMINAL NO. : 7114-2882-02
 : 7114-2883-02
 : 7114-2872-02



ISSUE MARK

△ 98.03.17	CHANGED FORM & ADDED DIMENSION	C98-L139	H. Y	CUSTOMER				MATL. COPPER ALLOY (t=0.30)		TREAT. & FIN.						
△ 97.09.26	CORRECTED AN ERROR	C97-M732	H. K	CUSTOMER PART NO.		CUSTOMER DWG NO.		SPEC. TIN PLATING								
96.07.11	NEW	C96-M327	H. K	OFFICE		TRIAL PART NO.		NAME MF-H-SN TERMINAL								
LET	DATE	REVISION RECORD NO.	CHKD	VENDOR		VENDOR NO.										
GENERAL TOLERANCE																
	10MAX	50MAX	100MAX	250MAX	2500VR	ANGLE	ECCENT	DWG TYPE	DWG SOURCE	DWG DATE	UNIT	SCL	ANGLE	PART NO.	7116-2927-02 ETC.	
A	±0.15	±0.2	±0.3	±0.5	±0.75	±30'	0.1	R	NEW	96.07.11	mm	5/1	3	CH. CODE		
B	±0.2	±0.3	±0.55	±0.95	±1.4	±30'	0.1	APPROVED	CHECKED	CHECKED	DESIGN	DRAWN		DWG NO.	7116-2927-02:R	
◎	±0.3	±0.5	±0.8	±1.4	±2	±30'	0.15	神田 庄 寿雄		H. YOSHIDA	吉田		SET DWG NO.			
SPECIFIED			MASS		g		98.03.23		98.03.19		98.03.18 98.03.17		96.06.24		98.03.17	
YAZAKI CORPORATION																