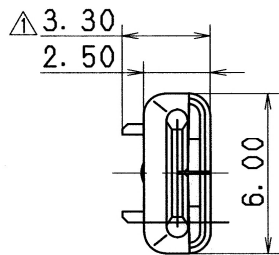


PART NO. AND CH. CODE	$\Delta W_1 \pm 0.4$	$\Delta W_2 \pm 0.4$	ΔH_1	ΔH_2	ΔX	WIRE SIZE
7114-4035	2.90	5.40	(2.62)	(4.52)	0.40	AVS 0.3~AVS 0.5 EQUIVALENT
7114-4036	3.60	5.70	(3.34)	(4.38)	0.60	AVS 0.5~AVS 1.25 EQUIVALENT
7114-4037	4.90	6.90	(4.63)	(5.42)	0.80	AVS 2.00~AVS 3.00 Δ AVX 3.00 EQUIVALENT

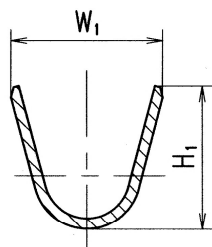


Δ 注記

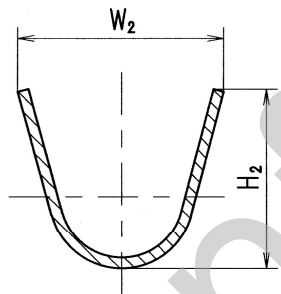
- 嵌合相手品番 : 7116-4035 ETC.
- 適用ゴム栓品番 : 7158-3014-90 ETC.

Δ NOTES

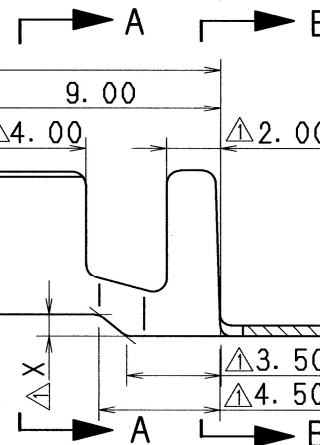
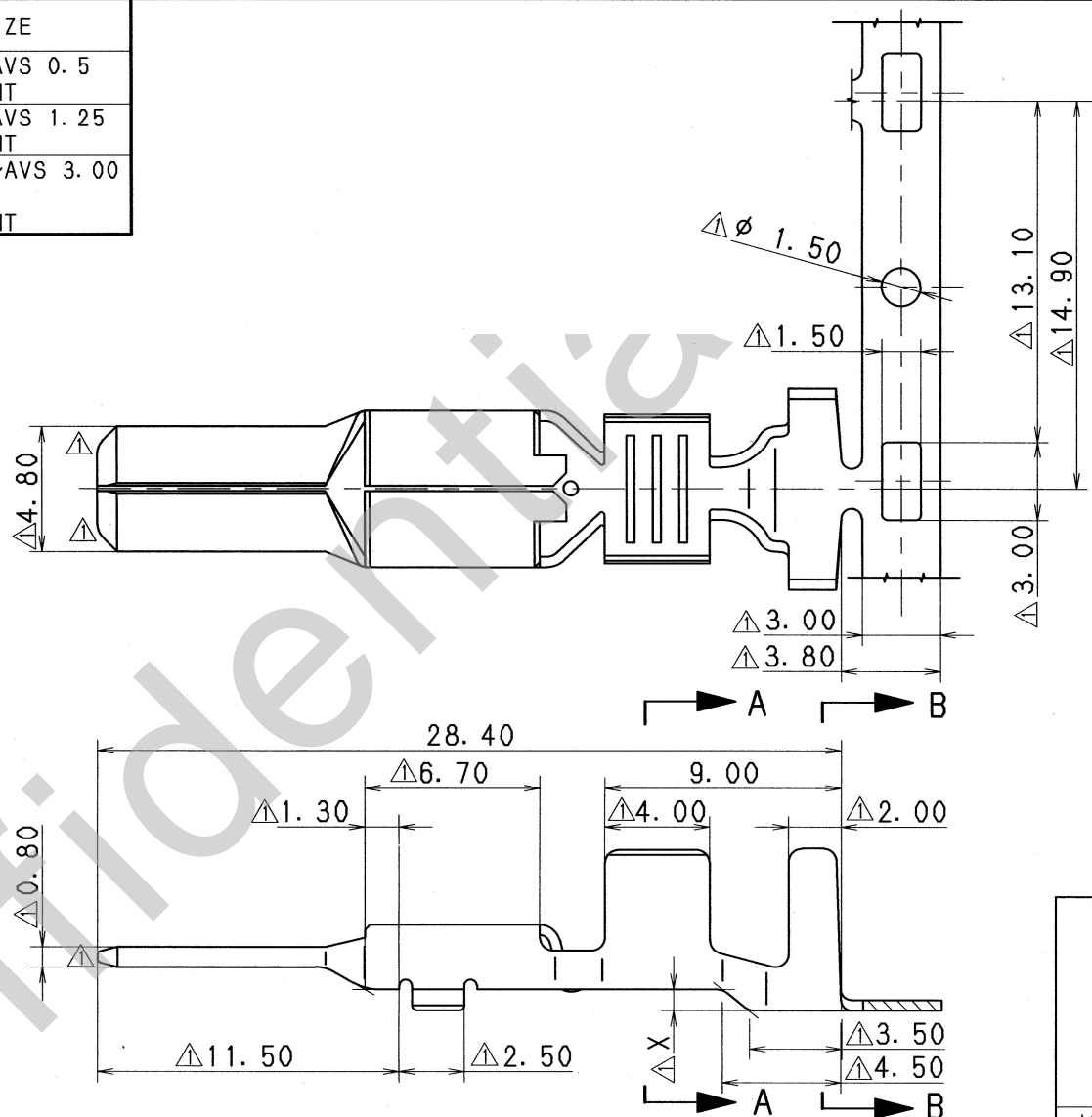
- MATING PART NO. : 7116-4035 ETC.
- APPLICABLE RUBBER STOPPER NO. : 7158-3014-90 ETC.



Δ SEC. A-A



Δ SEC. B-B



ISSUE MARK

Δ 07.05.07	CHANGED APPLICABLE WIRE SIZE, ETC.	C07-Z341	T. H	CUSTOMER	MATL. SPEC.	Δ BRASS (t=0.40)	TREAT. & FIN.	TIN PLATING							
Δ 98.07.18	CHANGED FORM, NAME & ADDED DIMENSION, NOTES	C97-N461	H. K	CUSTOMER PART NO.	CUSTOMER DWG NO.	NAME	Δ 4.8 SEALED TERMINAL MALE								
88.09.27	NEW	8MC-1191	A. H	OFFICE	TRIAL PART NO.										
LET	DATE	REVISION RECORD NO.	CHKD	VENDOR	VENDOR NO.										
GENERAL TOLERANCE				DWG TYPE	DWG SOURCE	DWG DATE	UNIT	SCL	ANGLE						
	10MAX	50MAX	100MAX	250MAX	2500VR	ANGLE	ECCENT	R	NEW	88.09.27	mm	5/1	3	PART NO. CH. CODE	7114-4035 ETC.
A	± 0.15	± 0.2	± 0.3	± 0.5	± 0.75	$\pm 30'$	0.1	APPROVED	CHECKED	CHECKED	DESIGN	DRAWN	DWG NO.	7114-4035:R	SET DWG NO.
B	± 0.2	± 0.3	± 0.55	± 0.95	± 1.4	$\pm 30'$	0.1	山梨	鈴木	濱井	SUEYOSHI	C. REPOLLO	YAZAKI CORPORATION		
C	± 0.3	± 0.5	± 0.8	± 1.4	± 2	$\pm 30'$	0.15	07.05.09	07.05.07	07.05.07	87.03.04	07.05.07			
SPECIFIED				MASS											