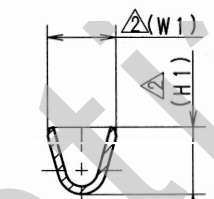
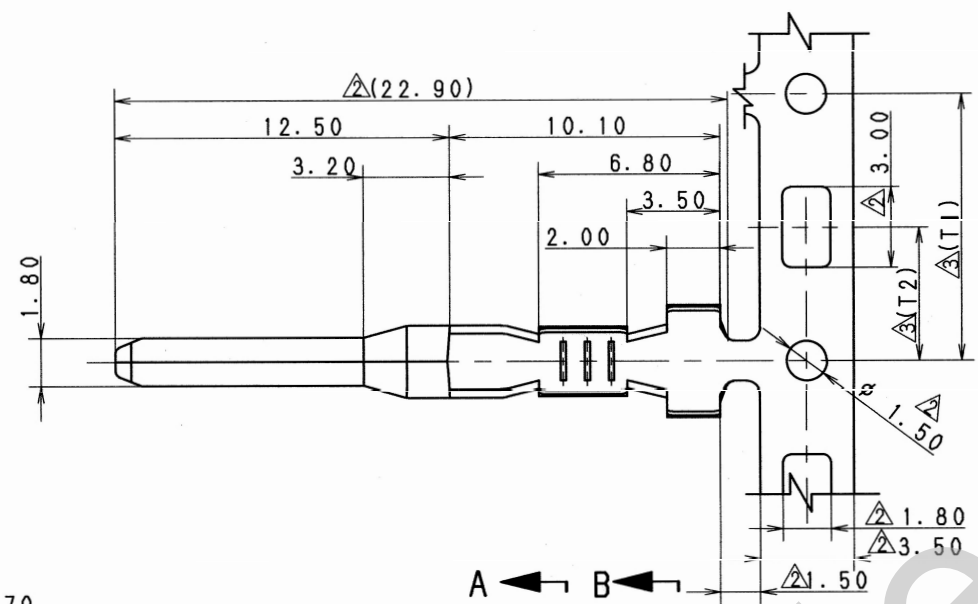
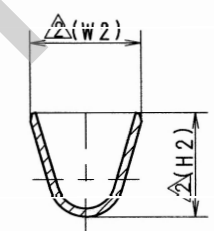


YAZAKI PART NO. AND CH. CODE	H1	W1	H2	W2	△T1	△T2	APPLICABLE WIRE SIZE	TREAT & FIN.
7114-1470 △(7B14-1470)	2.5	2.6	3.9	4.2	10.0	5.0	AVS 0.3-0.85	TIN PLATING
7114-1470-08 △(7B14-1470-08)								GOLD PLATING
7114-1475	3.2	3.2	4.2	4.3	11.2	5.6	AVS 1.25 AVSS 2.0	TIN PLATING
7114-1475-08								GOLD PLATING



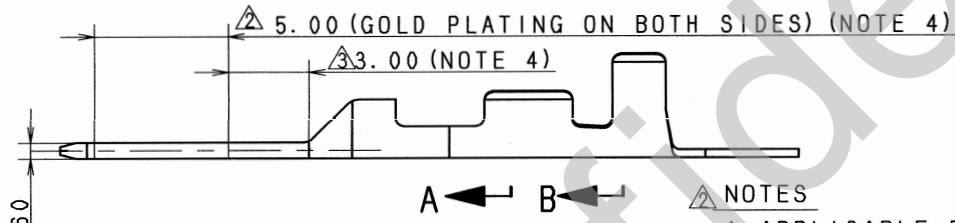
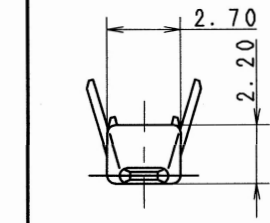
SEC. A-A



SEC. B-B

△ 注記

- 嵌合雌ターミナル品番：7116-1470 ETC.
- 適用雄ハウジング品番：7122-1965-30 ETC.
- () 内品番は、エアバッグ (A/B) 回路及び特別管理回路に使用する時に適用すること。
- 本寸法は7114-1470-08 (7B14-1470-08) 及び7114-1475-08に適用。



△ NOTES

- APPLICABLE FEMALE TERMINAL NO. : 7116-1470 ETC.
- APPLICABLE MALE HOUSING NO. : 7122-1965-30 ETC.
- PART NUMBERS IN PARENTHESIS SHALL BE USED FOR AIR BAG (A/B) CIRCUITS AND OTHER CIRCUITS DESIGNATED FOR SPECIAL MONITORING.
- THIS DIMENSION IS APPLIED TO 7114-1470-08 (7B14-1470-08) AND 7114-1475-08.

ISSUE MARK

△	07/05/10	ADDED DIMENSION, ETC.	C07-Z371	T. K
△	06/07/11	ADDED A/B PART NO., ETC.	C06-Z656	T. K
△	90/02/05	CHANGED TOLERANCE AND CORRECTION OF CLERICAL ERROR	C90-6120	M. K
	87/03/19	NEW	7MC-4042	H. S
LET	DATE	REVISION RECORD	NO.	CHKD

CUSTOMER		MATERIAL SPEC.		TREAT. & FIN.	
CUSTOMER PART NO.		BRASS (t=0.3)		SEE TABLE	
OFFICE		NAME		070 TYPE TERMINAL MALE	
VENDOR		TRIAL PART NO.			
VENDOR NO.					

△ GENERAL TOLERANCE								
	10MAX	50MAX	100MAX	250MAX	2500VR	ANGLE	ECCENT	
A	±0.15	±0.2	±0.3	±0.5	±0.75	±30'	0.1	
B	±0.2	±0.3	±0.55	±0.95	±1.4	±30'	0.1	
◎	±0.3	±0.5	±0.8	±1.4	±2	±30'	0.15	
SPECIFIED							MASS	g

DWG TYPE	DWG SOURCE	DWG DATE	UNIT	SCL	ANGLE
R	NEW	87/03/19	mm	△5:1	3
APPROVED	CHECKED	CHECKED	DESIGN	DRAWN	
杉山(典)	笠井(横)	小林	S. YAGI	C. AGCAOILI	
07.05.10	07.05.10	07.5.10	84/12/21	07/05/10	

PART NO. CH. CODE	△ 7114-1470 ETC. (7B14-1470 ETC.)	
DWG NO.	7114-1470:R	SET DWG NO.
YAZAKI CORPORATION		