

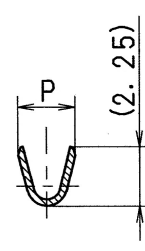
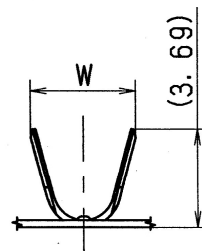
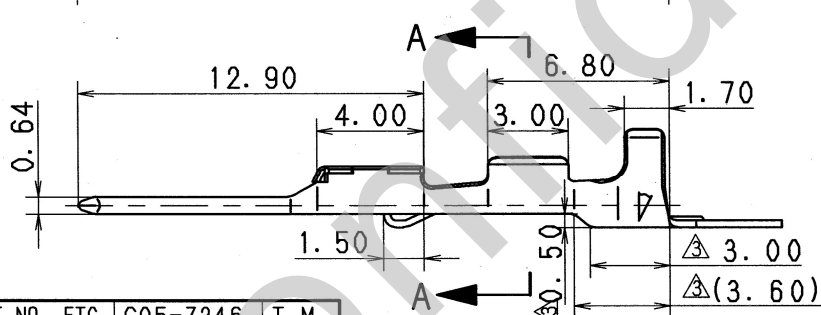
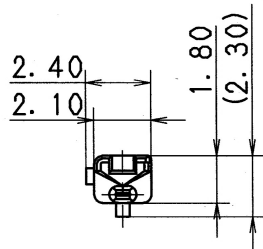
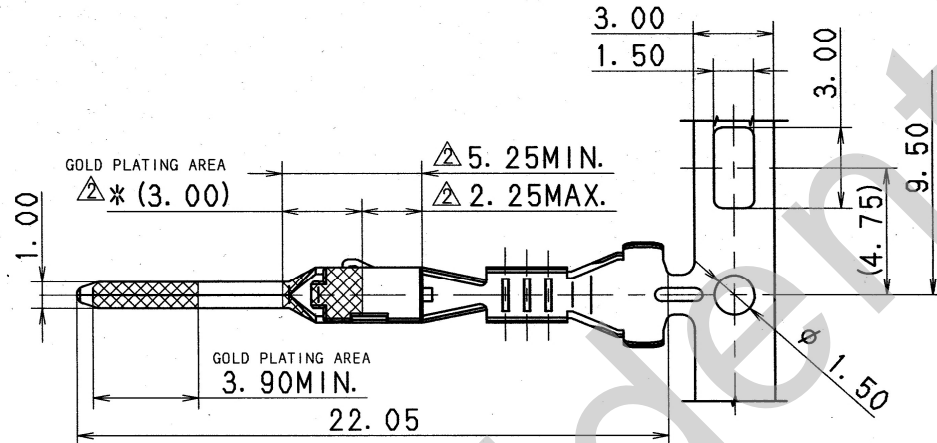
NOTES

- ⊠ 1. MATING PART NO. : 7116-1466-02 ETC. (7B16-1466-02 ETC.)
- ⊠ 2. APPLICABLE WIRE SEAL NO. : 7158-3120-90 (7B58-3120-90)  
7158-3121-80 (7B58-3121-80)
- ⊠ 3. PART NUMBERS IN PARENTHESIS SHALL BE USED FOR AIR BAG  
(A/B) CIRCUITS AND OTHER CIRCUITS DESIGNATED FOR  
SPECIAL MONITORING.
- ⊠ 4. Au PLATE IN \* DIMENSION AREA (7B14-1466-08, 7B14-1469-08)

PART NO. AND CH. CODE	P	W	APPLICABLE WIRE SIZE	MATERIAL
7114-1466-02 ⊠(7B14-1466-02)	2.15	3.95	CAVS 0.3~0.5 CAVUS 0.3~0.5	BRASS (t=0.25) TIN PLATING
7114-1466-08 ⊠(7B14-1466-08)				BRASS (t=0.25) GOLD PLATING
7114-1469-02 ⊠(7B14-1469-02)	2.65	4.10	CAVS 0.85 CAVUS 0.85	BRASS (t=0.25) TIN PLATING
7114-1469-08 ⊠(7B14-1469-08)				BRASS (t=0.25) GOLD PLATING

注記

- ⊠ 1. 嵌合相手品番 : 7116-1466-02 ETC. (7B16-1466-02 ETC.)
- ⊠ 2. 適用ゴム栓品番 : 7158-3120-90 (7B58-3120-90)  
7158-3121-80 (7B58-3121-80)
- ⊠ 3. ( ) 内品番は、エアバック (A/B) 回路及び特別管理回路に使用する時に適用すること。
- ⊠ 4. \*寸法の金メッキ範囲は、7B14-1466-08, 7B14-1469-08のみ適用とする。



SEC. A-A

⊠ 05/03/02	ADDED A/B PART NO., ETC.	C05-Z246	T. M	CUSTOMER		MATL. SPEC.	SEE TABLE	TREAT. & FIN.	SEE TABLE	ISSUE MARK								
⊠ 00/08/21	CORRECTION OF A CLERICAL ERROR	C00-6778	M. F	CUSTOMER PART NO.		NAME		RK-TYPE TERMINAL MALE										
⊠ 00/01/19	CHANGED FORM ETC.	C00-L091	T. H	CUSTOMER DWG NO.		OFFICE		TRIAL PART NO.										
98/03/19	NEW	C98-L459	M. I	VENDOR		VENDOR NO.												
LET	DATE	REVISION RECORD NO.	CHKD	GENERAL TOLERANCE		PART NO. AND CH. CODE		7114-1466-02 ETC. (7B14-1466-08 ETC.)										
				10MAX	50MAX	100MAX	250MAX	2500VR	ANGLE	ECCENT	DWG TYPE	DWG SOURCE	DWG DATE	UNIT	SCL	ANGLE	DWG NO.	SET DWG NO.
				±0.15	±0.2	±0.3	±0.5	±0.75	±30'	0.1	R	NEW	98/03/19	mm	5:1	3	7114-1466-02:R	
				±0.2	±0.3	±0.55	±0.95	±1.4	±30'	0.1	APPROVED	CHECKED	CHECKED	DESIGN	DRAWN			
				±0.3	±0.5	±0.8	±1.4	±2	±30'	0.15	杉山	藤地	松田	M. TSUJI	E. PANTONI			
SPECIFIED			MASS			YAZAKI CORPORATION												