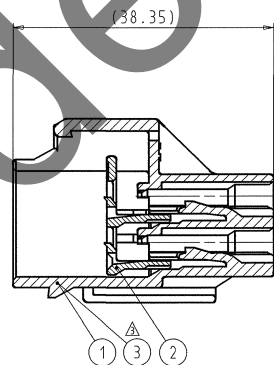
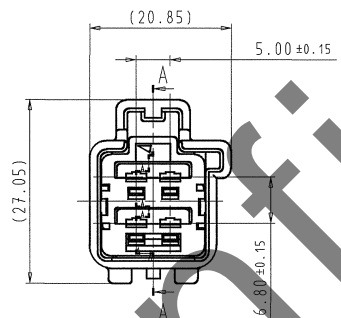
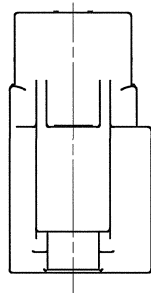


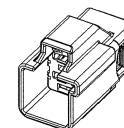
| 1 | 2 | 3 | 4 | 5 | | | |
|-----------------------|-----|--------------|--|----------|------------|------|------------------------|
| SUB ASSEMBLY PART NO. | NO. | PART NO. | PART NAME | MATERIAL | COLOR | QTY. | YAZAKI MATING PART NO. |
| 7282-6446-40 | ① | 7182-6446-40 | YESC KAIZEN 2.8 SYSTEM CONNECTOR 4P (M) HOUSING (TYPE-A) | PBT-GF15 | LIGHT GREY | 1 | 7283-6446-40 |
| | ② | 7158-6210-50 | YESC KAIZEN 2.8 SYSTEM CONNECTOR 4P (M) FRONT HOLDER | PBT | ORANGE | 1 | |
| 7282-6446-30 | ③ | 7182-6446-30 | YESC KAIZEN 2.8 SYSTEM CONNECTOR 4P (M) HOUSING (TYPE-A) | PBT-GF15 | BLACK | 1 | 7283-6446-40 |
| | ④ | 7158-6210-50 | YESC KAIZEN 2.8 SYSTEM CONNECTOR 4P (M) FRONT HOLDER | PBT | ORANGE | 1 | |

△ NOTES:

1. MATERIAL: SEE TABLE;
2. COLOR: SEE TABLE;
3. APPL/CABLE TERMINALS: 7114-4110-02 ETC.;
4. MATING PART NUMBERS: SEE TABLE;
5. FOR GENERAL GEOMETRICAL TOLERANCE SEE TABLE (ECCENT-ECCENTRICITY);
6. THE MATERIALS USED IN THIS PRODUCT ARE IN CONFORMITY WITH REQUIREMENTS OF EU ELY 2000/53/EC DIRECTIVE AND ASSOCIATED DOCUMENTS
7. PRINTED COPIES ARE UNCONTROLLED.THEY ARE POTENTIALLY OUT-OF-DATE AND INVALID. DATABASE IS MASTER.



SECTION A-A



ISOMETRIC VIEW
(SCALE 1:1)

ISSUE MARK

| | | | | | |
|-------------------|--|--------------------------|--|---------------------------------------|--|
| CUSTOMER | | MATERIAL SPEC. SEE TABLE | | TREAT. & FIN. | |
| CUSTOMER PART NO. | | CUSTOMER DWG NO. | | NAME YESC KAIZEN 2.8 SYSTEM CONNECTOR | |
| OFFICE | | TRIAL PART NO. | | NAME 4P (M) SUB ASSEMBLY (TYPE-A) | |
| VENDOR | | VENDOR NO. | | PART NO. △ 7282-6446-30, 7282-6446-40 | |
| SPECIFIED | | MASS 8.15g | | DWG NO. 7282-6446-40:R | |
| DATE | | REVISION RECORD | | YAZAKI CORPORATION | |

| LET | DATE | REVISION RECORD | NO. | CHKD |
|-----|----------|----------------------------------|----------|------|
| △ | 10.03.09 | ADDED PART NUMBER & NOTES CHANGE | Y09-0064 | G.G. |
| △ | 14.09.05 | CORRECTED COLOR | C05-D703 | G.G. |
| △ | 09.09.02 | CHANGED REVISION RECORD NUMBER | C02-E308 | M.K. |
| △ | 09.09.02 | NEW | C02-E305 | M.K. |

1

2

3

4

5

A2