

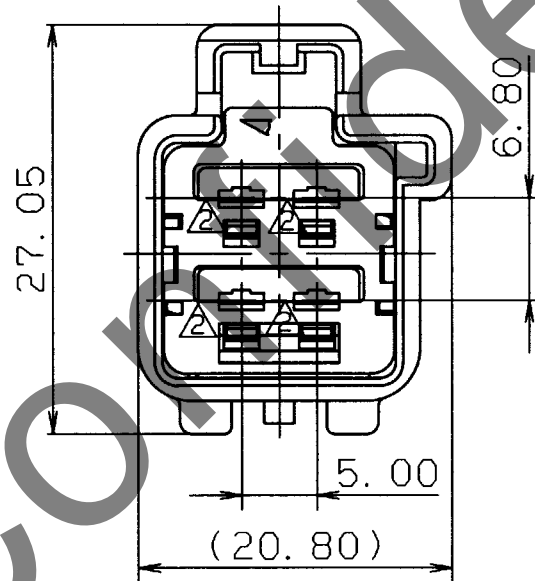
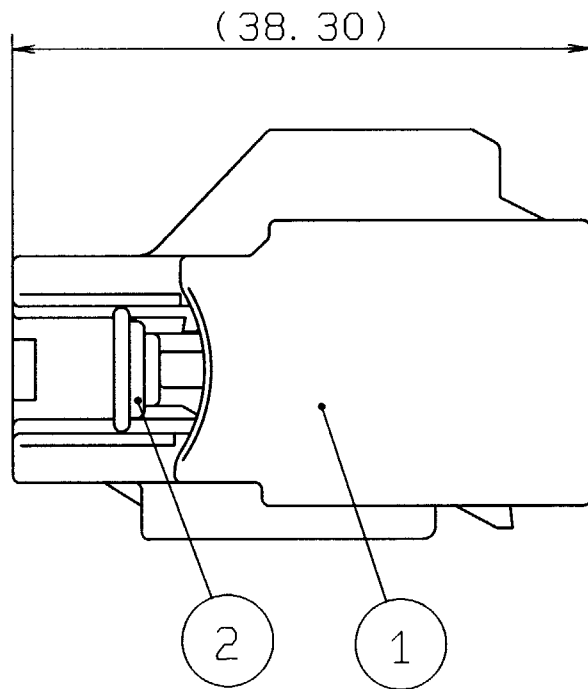
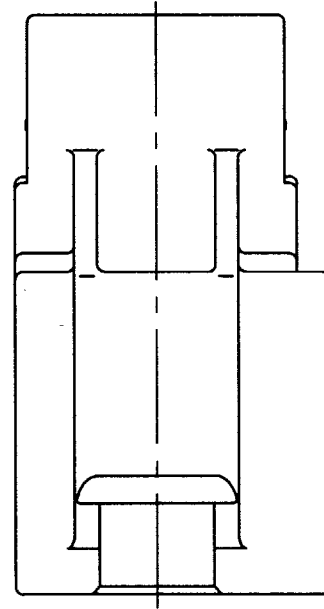
| SUB ASS'Y NO. & C. C. | NO. | PART NO. | MATERIAL | COLOR | QTY. |
|-----------------------|-----|----------------|----------|------------|------|
| 7282-5561-40. ㊦ | ① | 7182-5561-40 | HPA | LIGHT GRAY | 1 |
| | ② | ㊦ 7158-4184-50 | HPA | ㊦ ORANGE | 1 |

注記

- 1. 適用端子品番 : 7114-4110-02 ETC.
- 2. 嵌合相手品番 : 7283-5561-40

NOTES

- 1. APPLICABLE TERMINAL PART NO. : 7114-4110-02 ETC.
- 2. MATING PART NO. : 7283-5561-40



ISSUE MARK

| | | | | | |
|---|--|---|--|---|--|
| ㊦ 97.04.08 CHANGED FORM. ㊦ C97-L652 H. K ㊦ 96.11.16 CHANGED TABLE. ㊦ C96-N068 H. K 95.07.18 NEW C95-M151 Y. U | | CUSTOMER CUSTOMER PART NO. CUSTOMER DWG NO. OFFICE TRIAL PART NO. | | MATL. SPEC. SEE TABLE TREAT. & FIN. | |
| LET DATE REVISION RECORD NO. CHKD | | VENDOR VENDOR NO. | | NAME ㊦ 2.8 SYSTEM CONNECTOR 4P(M) SUB ASS'Y (TYPE-A) | |
| GENERAL TOLERANCE | | DWG TYPE DWG SOURCE DWG DATE UNIT SCL ANGLE | | PART NO. CH. CODE 7282-5561-40. ㊦ | |
| 10MAX 50MAX 100MAX 250MAX 250OVR ANGLE ECCENT A ±0.15 ±0.2 ±0.3 ±0.5 ±0.75 ±30' 0.1 | | APPROVED CHECKED CHECKED DESIGN DRAWN 遠藤 根 野花崎 IWAHORI ITOH | | DWG NO. 7282-5561-40:R SET DWG NO. | |
| B ±0.2 ±0.3 ±0.55 ±0.95 ±1.4 ±30' 0.1 © ±0.3 ±0.5 ±0.8 ±1.4 ±2 ±30' 0.15 SPECIFIED MASS | | 97.04.14 97.04.14 97.04.10 95.06.23 97.04.08 | | YAZAKI CORPORATION | |