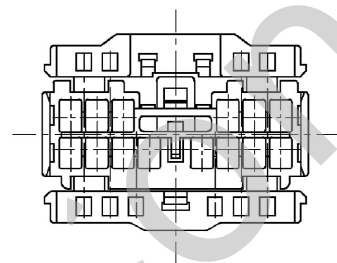
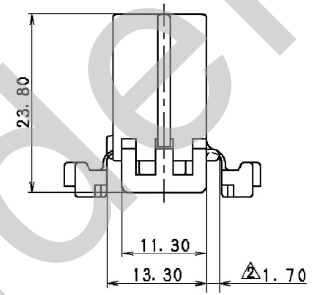
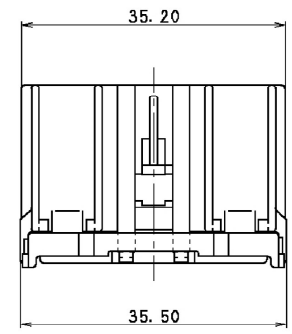
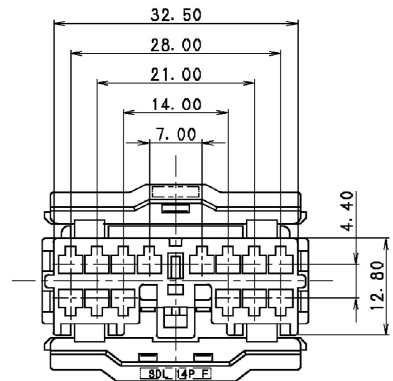


YAZAKI PART NO.	COLOR
7123-8346	NATURAL
7123-8346-30	BLACK
△ 7123-8346-80	BROWN

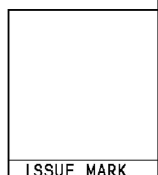


注記

1. 対応相手は、7122-8346 ETC.
2. 使用ターミナルは、7116-1473, 7116-1473-08.
7116-1474, 7116-1474-08.

NOTES

1. MATCHING HOUSING NO. :7122-8346 ETC.
2. MATCHING TERMINAL NO. 7116-1473, 7116-1473-08.
7116-1474, 7116-1474-08.



ISSUE MARK

△	10.11.15	CHANGED PART NAME	C10-ZA96	R.M
△	08.11.21	ADDED DIMENSION AND ETC.	C08-Z831	E.S
△	91.01.14	ADDED PART NO. & RENEW	C91-6039	S.I
	88.02.24	NEW	8MC-0255	H.T
LET	DATE	REVISION RECORD	NO.	CHKD

GENERAL TOLERANCE							
	10MAX	50MAX	100MAX	250MAX	2500VR	ANGLE	ECCENT
A	±0.15	±0.2	±0.3	±0.5	±0.75	±30'	0.1
B	±0.2	±0.3	±0.55	±0.95	±1.4	±30'	0.1
◎	±0.3	±0.5	±0.8	±1.4	±2	±30'	0.15
SPECIFIED						WEIGHT	

CUSTOMER		MATT. P. B. T		TREAT. & FIN.	
CUSTOMER PART NO.		CUSTOMER DWG NO.		NAME	
OFFICE		STDLIB. NO.		△SDL TYPE HOUSING	
VENDOR		VENDOR NO.		14P FEMALE	
DWG TYPE		DWG SOURCE	DWG DATE	UNIT	SCL ANGLE
R		NEW	88.02.24	mm	2/1 3
APPROVED	CHECKED	CHECKED	DESIGN	DRAWN	PART NO. 7123-8346 ETC.
S. MIZUSE		R. CABANGAL	H. SAITOH	R. MAJERANO	DWG NO. 7123-8346:R TRIAL PART NO. 087623-4145
10.11.15		10.11.15	87.12.24	10.11.15	YAZAKI CORPORATION